

Buying Department.

The Buying Department of my Office offers the largest and best collection of Trees, Shrubs and Plants in the world. The largest, because it offers the products of the leading nurseries of Europe, America and Japan; the best, because expert knowledge is used in selecting stock in the best nurseries. This Department, although only established ten years, has given such satisfaction that there are but few nurserymen and plantsmen who handle so much stock.

My business is purely an office one. I have no stock on hand that must be sold. My customers' interests and mine are identical, and when anything is ordered from me, I buy it direct from the very best grower of that particular tree or shrub, wherever he may be found, in America, Europe or Japan. By combining the orders of a great many people, I obtain very low prices, and give my customers the benefit of them by charging only a moderate profit for my services.

In connection with my office, I have extensive Experimental Grounds in which all novelties, rarities and standard varieties are tested.

To avoid misunderstandings, customers are requested to read terms on next page before ordering.

J. WILKINSON ELLIOTT,

LANDSCAPE ARCHITECT,

HORTICULTURAL BUYER'S AGENT,

CARNEGIE BUILDING,

PITTSBURGH, PA.

TELEPHONES :

1078 Pittsburgh (Office).

Colfax Station (Experimental Grounds).

(Through Sharpsburg Exchange.)

Terms of Payment, Etc.

Please Note the Dates given for receiving Orders for Stock to be Imported. Orders are often sent to me too late to be filled.

TERMS OF PAYMENT.

My terms of payment are invariably cash on delivery, which does not mean that I ship C. O. D., as I will not do so under any circumstances. I deliver the goods and mail bills at the same time, and expect payment within a few days. People unknown to me will please send references with their order.

PRICES.

Prices in this list are made subject to stock offered being unsold when ordered.

GUARANTEES.

I guarantee all nursery stock furnished by me to be first class, true to name and delivered in good condition when shipped by express. Stock is shipped by freight at purchaser's risk, unless otherwise agreed upon.

I DO NOT GUARANTEE STOCK TO GROW OR RESULTS IN ANY WAY. NO COMPLAINT WILL BE ENTERTAINED THAT IS NOT MADE IMMEDIATELY UPON RECEIPT OF STOCK.

There are so many causes for failure over which I have no control, that I can assume no responsibility after stock is delivered in good order. Poor soil, unfavorable weather, ignorant or careless culture all contribute to failure and all are beyond my control.

A Catalogue as comprehensive as this, must of necessity offer some varieties of difficult culture, and when these are ordered, I presume the people ordering them have the knowledge needed for their culture. Successful gardening requires knowledge, enthusiasm and perseverance, and these I can not supply, but I will be glad to make selection for the "can't be killed" class of plants for people who wish them.

IMPORT ORDERS.

Import orders are taken subject to failure of crops.

SHIPPING DIRECTIONS.

Please give explicit shipping directions, stating whether stock is to be shipped by freight or express, and by what route. Early orders for trees and shrubs can be generally shipped safely by freight, but plants will be sent by freight at the risk of the purchaser only.

EARLY ORDERS.

The earlier orders are sent, the better I can fill them. Orders for Rhododendrons, Hardy Azaleas and Kelway Peonies must be received not later than March 1st, for spring delivery.

CLUB ORDERS.

No smaller quantities will be supplied than those quoted in this list, but it is suggested where these quantities are too large, that two or three friends or neighbors could combine their orders to advantage, and save transportation charges.

SPECIAL IMPORT ORDERS.

Special orders will be taken to import from Europe any thing desired in trees, shrubs or plants. For this service I charge a commission of 25 per cent., but as I buy everything from the growers at lowest wholesale prices, customers can depend on getting the stock for less money than it can be obtained in any other way. My knowledge of nursery stock and my experience in importing, will save my customers from any mistakes in bringing over stock not suited to our climate, or stock that can be bought to better advantage on this side.

EXPERIMENTAL GROUNDS.

For my own information and for the benefit of my customers I have established experimental grounds where all promising novelties are tested. I also grow all varieties of trees, shrubs and hardy plants generally in the trade, so that I can have full information as to their respective merits. These grounds are also designed to help my landscape-gardening work by keeping me constantly in touch with the material I am using.

REFERENCES.

Many of the leading amateurs and public parks throughout the country find it to their advantage to have me buy all their stock for them. When desired I will send list of these as references for my reliability and quality of stock delivered.



Upright Honeysuckles in Bloom.

I have never seen anything more striking than the display of the New Upright Honeysuckles in the Arnold Arboretum in Boston. These splendid shrubs are made a special feature in this famous botanical garden and nothing is more worthy of a prominent position. They delight thousands in the spring when they are covered with their charming sweet-scented flowers, but their great glory is at midsummer when they are loaded with the most brilliant and beautiful berries borne by any shrub. When they become known, I predict a popularity for these shrubs beyond that of the popular Hardy Hydrangea which is now sold by the hundreds of thousands. They have every good quality: Perfect hardiness, vigorous growth, beautiful rich green foliage that is as persistent as that of the California privet and this season was bright and green until almost Christmas and two distinct seasons of unsurpassed beauty. These must not be confused with the climbing Honeysuckles so extensively used for covering porches. They are vigorous upright growing shrubs suitable for large groups, specimens, screens or untrimmed hedges. I have been offering these shrubs for two or three years but could only obtain a few plants at a high price. I now control a stock of a few thousand plants which, while they last, I will furnish at the following low prices:

Lonicera, Bella Candida,	each	30 cents,	\$3.00 per dozen,	\$20.00 per 100.
“ “ Rosea,	“	30 “	3.00 “	20.00 “
“ “ Albida,	“	30 “	3.00 “	20.00 “

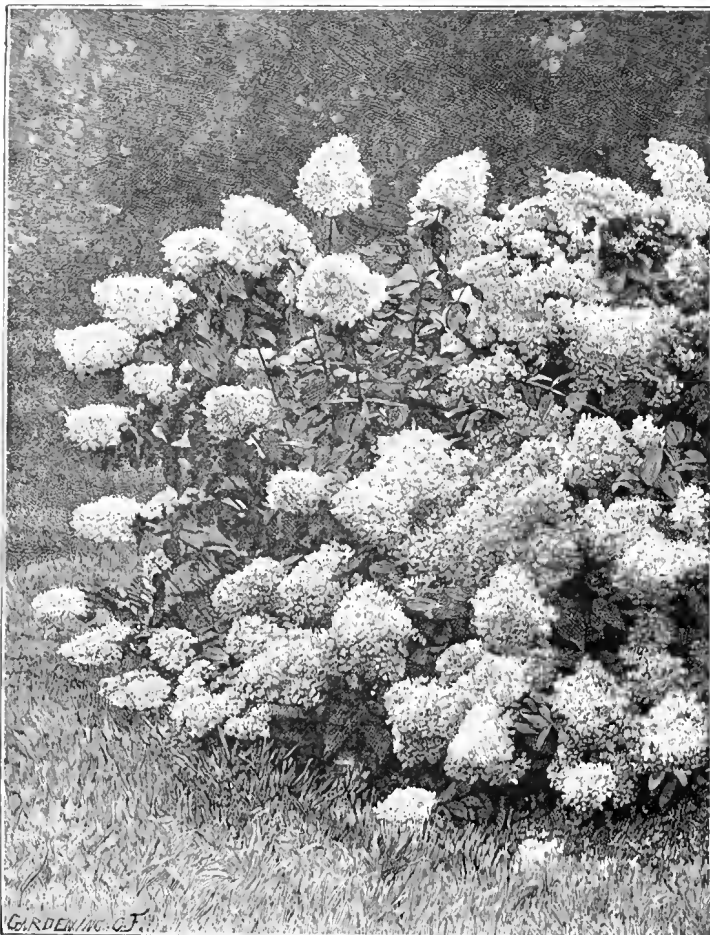
A few large plants, 50 cents each, \$5.00 per dozen.

LILIES.—Continued.

	Each.	Per doz.	Per 100		Each.	Per doz.	Per 100
Leichtlinii , yellow, neat and elegant habit; flowers pure canary yellow with crimson spots.....	\$ 30	\$3 00	\$12 00	Auratum Macranthum , a grand variety, of remarkable strength and vigor; immense pure Ivory white flowers with a golden band through each petal.....	\$ 45	\$4 50	\$23 00
Leichtlinii , red, orange red, with crimson spots.....	30	3 00	22 00	Auratum Wittei , a magnificent Lily; immense flowers of the purest white, with a wide yellow stripe through the center of each petal very tall growing and free blooming.....	75	7 50
Batemani , bright apricot flower in July.....	1 25	8 00	Auratum Vittatum Bibrutum , magnificent flowers, 10 to 12 inches across; clear, waxy white with broad crimson stripe through the center of each petal.....	75	7 60
Rubellum . This is a beautiful new Lily, similar to <i>Krameri</i> , but of much more vigorous constitution. It is unknown in this country, but in England where it has been fully tested it is highly praised and it seems likely to become as popular as the <i>Speciosum</i> varieties.....	25	2 25	15 00	Auratum Payphyllum , a remarkably large Lily of great vigor.....	35	4 00
Canadense flavum , our dainty, beautiful native Lily, graceful and charming, yellow flowers.....	1 00	7 00				
Canadense rubrum , red flowers.....	1 00	7 00				
“ mixed.....	75	6 00				

Low Prices for Hydrangeas.

Shipped from Station near Pittsburgh.



GROUP OF HARDY HYDRANGEAS ON LAWN.—From the English Flower Garden.

Prices good until stock is exhausted. Fall or spring delivery.

No more popular plant or shrub has ever been sent out than *Hydrangea Paniculata Grandiflora*, and I take great pleasure in offering my customers a large stock of splendid vigorous plants at such extremely low prices that it will enable them to plant this effective shrub in quantity.

People who have only seen this *Hydrangea* grown singly as specimens have no conception of how beautiful and effective they are when planted in masses. They are planted in this way at Newport, R. I., which is famous for its fine gardens, and almost as famous for its *Hydrangeas*. These *Hydrangeas* can be planted in connection with other shrubbery or in isolated beds, in the same manner as *Cannas*, *Caladiums* or other strong growing bedding plants. They are perfectly hardy, and once planted they are a permanent addition to the lawn or garden. When grown in beds or groups they should be planted about two feet apart in very rich soil, which should be liberally enriched annually with rotten stable manure, and in the early spring, before they commence to grow, cut back so as to leave only two or three inches of the new growth of the previous season, and if extremely large flowers are desired, cut out some of the weakest shoots after growth has commenced. Treated in this same manner they will produce enormous panicles of flowers, and the beds will be a solid mass of bloom. They bloom profusely the same season planted. Try them. You will find them more than satisfactory.

	Per 25.	Per 50.	Per 100
Hydrangea Paniculata Grandiflora , 12 to 18 inches.....	\$ 2 50	\$4 00	\$ 6 00
Hydrangea Paniculata Grandiflora , 24 to 30 inches.....	3 50	6 00	11 00
Hydrangea Paniculata Grandiflora , 3 feet, extra large and bushy.....	5 00	8 50	16 00

All of the above will bloom the first year, and are superior to the stock commonly retailed at 25 cents to \$1.00 each.

It is suggested that when smaller quantities are wanted two or three club together in ordering.

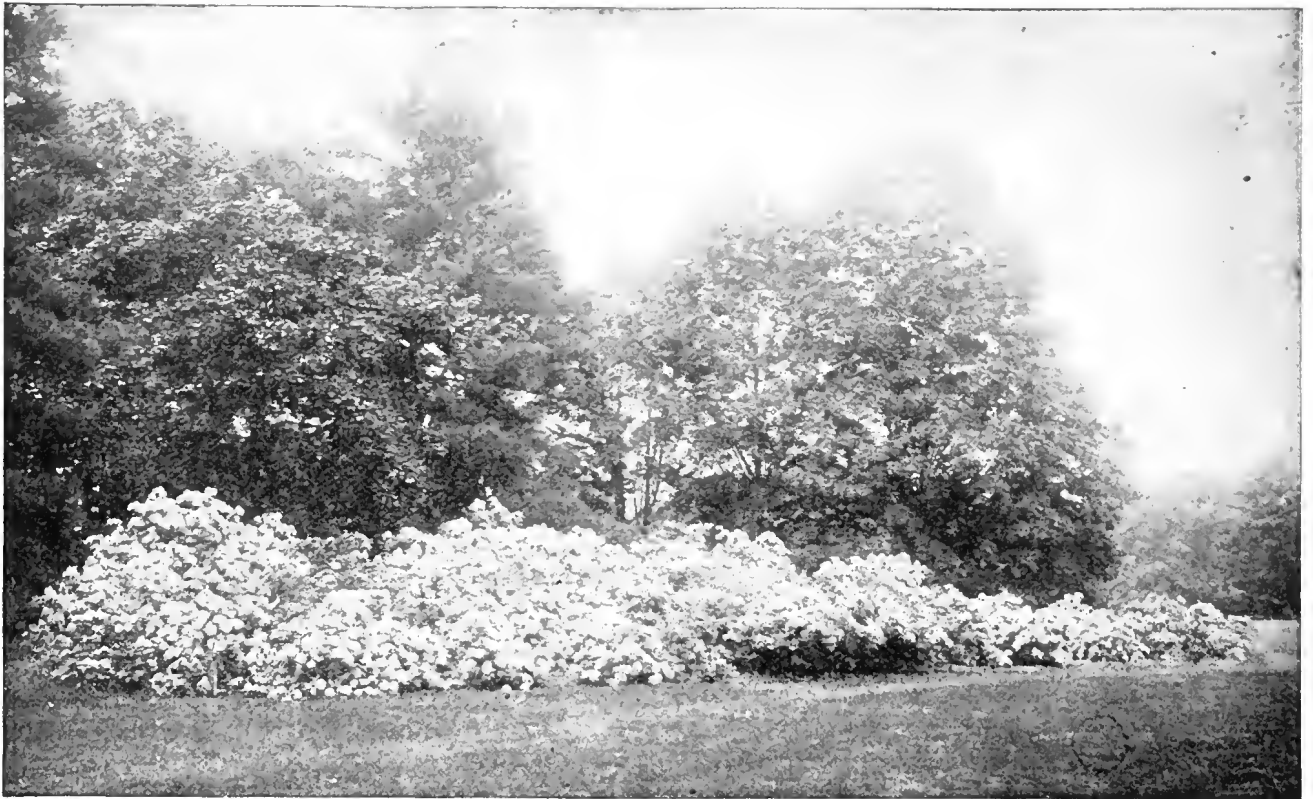
For prices on smaller quantities see list of Hardy Shrubs.

Special Offer of Gladioli.

Gladioli sent postpaid by mail for 10 cents per dozen, and 75 cents per 100 in addition to prices quoted. Prices good until withdrawn. Delivery at any time from November until June 15th.

For cutting, for the decoration of the house, or for any purpose for which cut flowers are used during the summer and fall months, no flower can be grown as satisfactory as the *Gladiolus*. The spikes of flowers are large, showy and very beautiful, and last a week in water after cutting. By planting at intervals from the 1st of April until the 15th of June, they can be had in blossom from June 25th until frost. For cutting purposes they can be grown in the vegetable garden or any convenient place, and as they can be planted very closely, a large quantity can be grown in very small space. They are of the easiest culture, failure being practically impossible, and it can be safely estimated that the bulbs will increase a

(Special offer of Gladioli continued on next page).



Group of Rhododendrons, on Grounds of H. H. Hunnewell, Esq., Wellesley, Mass.

ALL THE RHODODENDRONS ON MR. HUNNEWELL'S GROUNDS, OVER 10,000, WERE SUPPLIED FROM THE NURSERY OF MR. ANTHONY WATERER.

IMPORT PRICES FOR Rhododendrons and Hardy Azaleas.

ORDERS MUST BE RECEIVED NOT LATER THAN MARCH 1st.

I publish Illustrated Descriptive Pamphlet of Rhododendrons and Hardy Azaleas, which gives full cultural directions. It is sent free on application.

Although I give prices according to height, such classification is delusive, for a well grown plant 18 inches high is worth more than a poorly grown plant twice as high. I guarantee the stock offered below to be grown in the nursery of Mr. Anthony Waterer, and to be satisfactory in every respect. The sizes of Rhododendrons are given in inches, but the plants will be larger and smaller than the sizes quoted, according to the habit of growth of the variety.

I notice that one of my competitors pretends to meet my prices on RHODODENDRONS by describing them in three or four different qualities, and offering his POOREST quality at about my prices, and his BEST quality at an advance of 100 per cent. I have only ONE quality to offer, and that is the best in the world, and incomparably better than can be obtained from any American dealer, whether grower or importer. I am, perhaps, the largest importer of RHODODENDRONS in this country, and can easily satisfy intending buyers that my stock is the best and my prices are the lowest. Scores of the leading parks and amateurs have been supplied with this stock and their names will be furnished on application.

RHODODENDRONS.

	Per doz.	Per 100
Best Named Varieties (entirely hardy), about 18 inches high, good bushy plants well set, with bloom buds. This is the size usually sold at \$1.50 each.....	\$13 00	\$85 00
Best Named Varieties (entirely hardy), 2 to 2½ feet, good bushy plants, well set, with bloom buds	16 00	110 00
Best Named Varieties (entirely hardy), selected plants, 3 feet high, well set, with bloom buds	25 00	165 00
Best Named Varieties (entirely hardy), extra selected plants, 3 feet high, well set, with bloom buds.....	32 00	225 00
Best Named Varieties (entirely hardy), extra selected specimens, well set, with bloom buds, 3 to 6 feet high.....		\$3.00 to \$25.00 each,

	Per doz.	Per 100
(These specimen plants cannot be bought in this country for three times the price.)		
Best Named Varieties, Standards, well set, with bloom buds, 4 to 6 feet high, each, according to size and form, \$5.00, \$7.50, \$10.00, \$15.00, \$18.00, and \$25.00 each.		
Seedling Hybrids, grown expressly for the American trade. Perfectly hardy and very beautiful colors, nice bushy plants, and well set with bloom buds, about 18 inches high.....	\$ 9 60	\$ 64 00
Seedling Hybrids, same as above, but finer plants, 1½ to 2 feet high.....	13 00	85 00
Seedling Hybrids, same as above, extra strong plants, 2 feet high and upward.....	16 50	110 00
Seedling Hybrids, extra selected specimens, well set with bloom buds, 3 to 6 feet high, \$3.00 to \$20.00 each.		

(Rhododendrons and Hardy Azaleas continued on next page.)

IMPORT PRICES FOR RHODODENDRONS AND HARDY AZALEAS.—Continued.

HARDY AZALEAS.

	Per Doz.	Per 100.
Ghent Azaleas, good plants of the finest known kinds, well budded, equal to those sold here at \$1.50 each.	\$ 9 60	\$64 00
Ghent Azaleas, same as above, but larger	13 00	85 00
Ghent Azaleas, same as above, but extra fine and large plants, 2 feet high	16 50	110 00
Azalea Mollis, good plants, of the finest named varieties, well set, with bloom buds	9 60	64 00
Azalea Mollis, same as above, but larger plants	13 00	85 00
Azalea Mollis, same as above, but larger specimens, such as retail here at \$3.00 each	16 50	110 00
Azalea, New Hybrids, lovely new hybrid varieties of Ghent and Mollis, offered only by Mr. Waterer, nice bushy plants	13 00	85 00
Azalea, New Hybrids, same as above, but larger plants	16 50	110 00

NEW HYBRID AZALEAS.

Azalea Mollis X Occidentalis (Albicans). Flowers white with lemon blotch, very beautiful and sweet scented. Each, \$1.50.	
Azalea Mollis X Sinensis. Flowers very large and very showy, the colors principally bronze-orange. Per dozen, \$12.00 to \$20.00.	
Azalea Occidentalis. A distinct, late blooming, sweet scented species the color of the leaves in autumn, being wonderfully rich and varied. Per dozen, \$12.00.	

AZALEA RUSTICA FLORE PLENO.

New Double Azaleas, in 12 varieties, good blooming plants. Per dozen, \$20.00.

DWARF RHODODENDRONS.

These plants are of dwarf, bushy habit, and form suitable edgings for Rhododendron beds. They are also adapted for rockwork or grouping by themselves; a bed of either R. Wilsonianum, myrtifolium or ovatum makes a very satisfactory appearance in winter or summer.

Cheiranthifolium	} \$9.00 per doz.	Hybridum	} \$9.00 per doz.
Ciliatum		Myrtifolium	
Crugineum		Ovatum	
Miratum		Wilsonianum	

EVERGREEN SHRUBS.

	Per doz.	Per 100.
Kalmia latifolia, nice plants, well set, with bloom buds	9 60	\$54 00
Kalmia latifolia, larger plants, \$1.00 to \$5.00 each.		
Andromeda carabunda, nice plants	9 60	64 00
Andromeda japonica, the finest of all Andromedas, nice plants	16 50	110 00

The foregoing are import prices for orders received not later than March 1, and cancel all previous quotations. These prices include all charges for packing, custom house charges and freight to New York City. Freight from New York to point of destination must be paid by purchaser. All orders will be packed in separate cases in England and will be shipped direct to customers from New York by my agent there. Safe arrival in good condition and satisfaction guaranteed. Stock will be delivered in April at the proper time for planting. If preferred, I will import large orders for a commission of 25 per cent. on actual cost. This will make the stock cost 5 to 10 per cent. less than the prices quoted above. No orders for less than 12 plants will be filled, but the twelve may be assorted from anything offered in above list. The above prices include the 30 per cent. duty recently placed upon imported nursery stock.

New Lilacs on their own Roots.

Of late years there has been a multitude of new varieties of Lilacs grown, and some of them have very great beauty, but unfortunately almost all the stock offered, both in this country and Europe, has been budded on privet and is practically worthless, for Lilacs grown on this are certain to die in a few years. Nurserymen bud Lilacs on privet because they can produce a large stock quickly and inexpensively, but one Lilac on its own roots is worth a score of budded plants.

I have arranged with a leading English nursery to supply the varieties described, which are of the best, in good, strong plants **On Their Own Roots**. For prices of budded Lilacs, see my general list of shrubs.

Alba Grandiflora, very large, pure white trusses of flowers.
 Lemoinei Flore Pleno, double rose colored flowers, fine.
 Marie Legraye, large panicles of white flowers. The best white Lilac.

Souvenir de Louis Spath, most distinct and beautiful variety, trusses immense, very compact florets, very large, deep purplish red.
 Charles X, large shining leaves and great trusses of reddish purple flowers.

Price, \$1.00 each; \$10.00 per dozen; \$100.00 per hundred.

Not less than one dozen supplied unless with an import order for Rhododendrons and Azaleas, or other stock from the nursery of Anthony Waterer, which must amount to at least ten dollars. **Orders must reach me not later than March 1st.** Prices include all import charges and freight to New York City. Freight from New York City must be paid by purchaser. Quality guaranteed, and stock need not be taken if not satisfactory.

Other Choice Stock Grown by Anthony Waterer.

Orders Must Be Received Not Later Than March 1st.

No order for less than ten dollars' worth of the following stock will be filled unless it is combined with an order of Rhododendrons and Azaleas, or other stock from nursery of Mr. Anthony Waterer, the entire order to amount to not less than ten dollars. The prices quoted include all duty, custom house charges and freight paid to New York City. Freight from New York City to be paid by purchaser.

Daphne Cneorum Major, a low, tufted growing evergreen with rosy pink deliciously scented flowers, a charming plant, good strong plants; 75 cts. each, \$8.00 per doz.

Abies Canadensis Pendula, (Weeping Hemlock Spruce), very rare and desirable; \$3.00, \$4.00 and \$5.00 each.

Abies Pungens Glauca, Colorado Blue Spruce. It may seem odd to send to England for an American evergreen, but the stock in Mr. Waterer's nursery is the finest I have ever seen, the highest colored and most shapely trees; 3, 4, 5 and 6 feet high, perfect specimens; \$3.50, \$4.00, \$5.00 and up to \$10.00 each.

Abies Pungens Argentea, (Silver Blue Spruce), very rare and choice, \$6.00, \$7.00, \$8.00, and up to \$15.00 each for perfect shaped trees.

Abies Concolor. This is another splendid American evergreen of which it is almost impossible to get good trees in this country, 4 feet high, \$4.00 each.

Abies Concolor Violacea, very rare and beautiful; superb coloring; \$10.00 each.

Cedrus Atlantica Glauca. Mr. William Falconer says this is the finest blue evergreen in cultivation, but he don't say where to get good trees of it in America and he doesn't know, nor do I. Mr. Waterer has them in plenty; 3, 4, 5, 6 and 8 feet high, splendid specimens; \$3.00 to \$15.00 each.

OTHER CHOICE STOCK GROWN BY ANTHONY WATERER.—Continued.

Juniperus Chinensis Aurea, (Golden Chinese Juniper), 2 to 3 ft. \$1.00 each, specimens from \$4.00 to \$20.00 each.
Taxus Adpressa, one of the hardiest yews; \$1.50 each.
 " **Baccata**, (English Yew), 1½ to 2 feet; 50 cts. each, \$5.00 per doz.; specimens, \$5.00 to \$20.00 each.
Taxus Baccata Var. Elegantissima, (Golden English Yew), 1½ to 2 ft.; \$1.00 each; specimens, \$5.00 to \$25.00 each.
Seedling Golden Yews, 2 ft., \$1.50 each; specimens, \$3.50 to \$50.00 each.
 *The Stock of the various kinds of Golden Yews in this Nursery has no equal; it contains many thousands of Plants, 20 to 40 years old, as pyramids, and worked on the common Yew, with heads 10 to 12 feet in circumference. They must be seen to be appreciated.

HOLLIES.

Common Green, English, 3, 4, 5 and 6 ft. each, \$1.00 to \$7.00.
 The following varieties of Golden and Variegated Hollies are undoubtedly amongst the most beautiful evergreens in cultivation. Unfortunately, with the exception of the Common Green English variety, they are not hardy in this country north of Washington. They are, however, fine for growing in tubs and may be wintered in a shed or cold light cellar.

Altaclarensis	} Nice well-rooted plants, from 1½ to 2 ft.; \$1.00 to \$2.00 each.
Cillia	
Ferox (Hedgehog).....	
Hodginsti	
Laurifolia	
Moonlight	
Myrtifolia	
Scotica	
Serratifolia	
Tortuosa	
Waterer's	
Yellow-berried	

Variegated Hollies, of all the most popular gold and silver varieties, nice plants; \$1.25 to \$2.50 each.

*Nearly all of the above mentioned varieties of Green and Variegated Hollies can be supplied to any height up to 10 and 15 ft., the price varying with the bulk and height. Prices range from \$5.00 to \$50.00 each.

Cerasus Watererii, a most beautiful double flowering cherry; \$1.00 each
Fagus Purpurea Pendula, (Weeping Purple Beech), pyramids and standards, up to 10 and 12 feet; each, \$3.00 to \$15.00.
 We have no hesitation in describing this as the most important addition of hardy ornamental deciduous trees for many years past. It is as decidedly drooping in growth as the well known green Weeping Beech, while the leaf color is that of the best form of the Purple-leaved Beech. All Beeches are difficult to transplant and should be severely pruned when planted.
Pyrus Japonica, (Japan Quince), "Knap Hill Scarlet," among the numerous new varieties of this favorite old shrub this variety, raised in Mr. Waterer's nursery, stands out conspicuously; \$1.25 each.
Malus Alba Plena, new and beautiful; each, \$1.50.
 " **Baccata**, (Scarlet Siberian Crab); each, \$1.00.
 A small tree, yielding a profusion of rosy tinted flowers in spring and an abundance of bright and Cherry-like Crabs in Autumn.
Malus Elise Rathke, (New Weeping Apple), young standards; each, \$1.50.
Malus Floribunda, each, 75 cts., selected trees, \$1.25.
 One of the most brilliant of all spring-flowering trees. It is of moderate stature, and of rather slender yet free growth. Its long slender shoots are covered from end to end early in May with blossoms, which are of a rich crimson outside and in the bud state resemble wreaths of Cherries, while being white within they show when expanded a beautiful contrast of color. The tree is worthy of a prominent place in every garden.
Malus Floribunda Atrosanguinea, each, 75 cts., selected trees, \$1.25 each.
 Very beautiful in bud, being much darker colored than floribunda.
Malus John Downie, each, 75 cts.
 Very beautiful in fruit.
Malus Pendula, (Weeping Apple) each, \$1.25.
Malus Scheidereckii, each, 75 cts.
Pyrus Spectabilis, (Chinese Crab), each, 60 cts.
 " **Rosea Plena**, (Double Crab), each, 75 cts.
 A beautiful spring flowering tree, the branches of which, when in bloom, may be compared to garlands of double pink Roses.
Sophora Japonica Pendula Standards, one of the most characteristic of all weeping trees, very scarce; \$3.00 to \$6.00 each.
Ulmus Campestris Louis Van Houtte, a fine new golden leaved Elm, \$2.50 each.
Weigela Eva Rathke, a distinct and desirable new variety, blooming the whole summer, 75 cts. each.

Japanese Maples.

Shipped from Philadelphia, Pa.

The Japanese Maples are of dwarf habit, rarely growing over five or ten feet high, and are entirely hardy in the latitude of New York. The rich and glowing color of the leaves in spring and early summer makes them the most beautiful objects that can be planted on a lawn. A group of them during the months of May and June is a sight to be remembered. There are many varieties, all of which I can supply when desired, but the varieties offered below are the most beautiful and satisfactory of them all, and there is no place so small that should not have at least one of these exquisite dwarf trees. The stock that I offer is American grown, and is much superior to the cheap imported Japanese stock, which I consider almost worthless.

Acer Polymorphum , 18 to 24 inches.....	Each. \$1 00	Per doz. \$10 00	Acer Polymorphum , 2 to 13 feet.....	Each. \$1 50	Per doz. \$15 00
--	--------------	------------------	---	--------------	------------------

The above Japanese Maple has beautiful green foliage in the summer, but in the fall the foliage turns to brilliant crimson, making it one of the most striking and beautiful objects. It is the most vigorous grower of all the Japanese Maples and perhaps the most satisfactory. Especially desirable for planting in shrubberies.

Acer Polymorphum Sanguineum , (Blood-leaved Japan Maple), 12 to 15 inches.....	Each. \$ 60	Per doz. \$ 5 00	Acer Dissectum Atropurpureum , (Red cut-leaved Japan Maple) 2 to 2½ feet.....	Each. \$ 2 00	Per doz. \$ 20 00
Acer Polymorphum Sanguineum , (Blood-leaved Japan Maple) 18 to 24 inches.....	1 00	10 00	Acer Dissectum Atropurpureum , (Purple cut-leaved Japan Maple) 2½ to 3 feet.....	2 50	25 00
Acer Polymorphum Sanguineum , (Blood-leaved Japan Maple) 2 to 2½ feet.....	1 50	15 00	Acer Dissectum , (Green cut-leaved Japan Maple) in pots.....	2 50	25 00
Acer Polymorphum Sanguineum , specimens, \$2.00, \$3.00, \$4.00, \$5.00 and \$6.00 each.			Acer Japonicum Aureum , (Golden Japan Maple) 12 to 18 inches.....	2 00



OLD SPECIMEN PLANT OF TREE PÆONY.—From the English Flower Garden.

Japanese Tree Pæonies.

Last spring I was invited by one of my customers to see a collection of fifty Japanese Tree Pæonies in bloom that I had imported for him from Japan two years before, and if I could write a description that would give any idea of their beauty the Japanese growers would not be able to supply one-tenth of the demand for plants. I don't wonder that the Japs have a special holiday for visiting the Pæony gardens, but I do wonder that we Americans who boast of our education and refinement should be content with the poor and commonplace bedding plants usually seen in our gardens when such superb floral creations as Japanese Tree Pæonies are to be had at a small cost. I have said this before, but the truth is so important to a lover of a garden, and is so little known or heeded, that I must keep on repeating it. The first cost of a fine hardy plant like a tree pæony is its only cost and it increases in size and beauty year after year so that a plant that may have only cost fifty cents when purchased may become one in a few years that one would hesitate to accept twenty-five dollars for. Such a plant is a Tree Pæony. I have seen one that had sixty-six open flowers on it at one time, and read a description of another that had over five hundred blooms in one season. Now when it is considered that the blooms range from eight to twelve inches across, and are of the richest and most lovely shades of coloring imaginable it can be understood what a floral wonder a Japanese Tree Pæony may grow into. But one does not need to wait years for enjoyment of these flowers—a majority of the plants will bloom the first season planted, and in the second season will produce from two to five flowers each. The flowers range in color from pure white to the darkest shade of purple including all shades of scarlet, crimson, pink, some in solid colors, some curiously striped or marked. The shades of pink are the softest and most lovely imaginable.

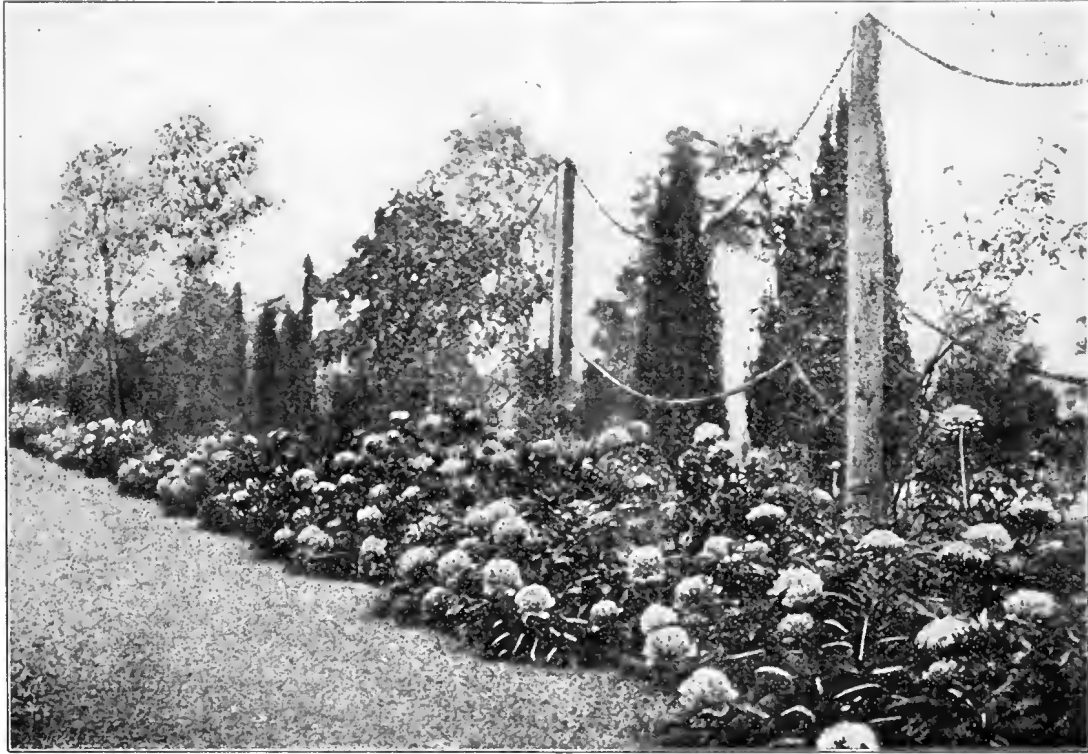
These Tree Pæonies must not be confused with common herbaceous Pæonies which are so popular, instead of dying to the ground every year they make a hard wooded growth and in time become quite large shrubs.

"The Tree Pæony is one of the noblest plants available for the garden; it is quite hardy and flourishes under the simplest treatment. The smallest shrub will flower in the most astonishing manner, bearing blossoms the size of dinner plates, and the plant increases annually in size until one plant becomes a veritable bank of living flower. The Tree Pæony is valuable for isolation on lawns, and for borders and in nooks backed by Conifers or other shrubs. Any soil suits it and any position. It will repay those who afford it good treatment in the form of well trenched soil and well-rotted manure, and occasional top dressings; but it should remain undisturbed as much as possible and allowed to mature its shoots, which year by year add to the size of the plant until it becomes the grandest object in the garden. Watering well before and during flowering greatly assists in the production of large shapely blooms, and where mild weather in the spring has brought on very early buds, protection of some kind should be given from late frosts. The plant is absolutely hardy, but where it has been induced by a mild winter to put forth early flowers, the buds get an occasional "nip." Flowering season: May and early in June."

I have a set of Japanese water color drawings of these Pæonies which will be sent for examination on receipt of ten cents to cover postage. These drawings must be returned, but if Pæonies are ordered the amount sent for postage will be allowed on the price of the Pæonies.

	Each.	Per Doz.	Per 100.
PRICE.—Fine Blooming Plants in 50 choice varieties.....	\$ 75	\$ 7 50	\$55 00
Extra Selected Blooming Plants in 50 choice varieties...	1 25	12 00	85 00

A limited number of large specimen plants at \$3.00, \$4.00, \$5.00, \$6.00 and \$7.00 each, according to size.



PÆONY BORDER.—From Country Life.

Herbaceous Pæonies.

I am glad that this good old-fashioned flower is becoming popular again, and if there were nothing to be obtained but the few old-fashioned sorts once seen in every garden their popularity would be well deserved, but nothing has been improved more than the Peony, and the English and Japanese growers have given us varieties that are really superb. Many of them are equal in form and coloring to the finest roses, and some are sweet scented. Their hardiness, ease of culture and the great size and plentifulness of bloom make them extremely desirable and effective in the garden or on the lawn. They are most effective when planted in large masses of separate colors. I have made arrangements for supplying my customers with the best Pæonies obtainable in America, Europe and Japan and at the lowest prices consistent with the highest quality. The newest varieties of Pæonies from the famous English nursery of Messrs. Kelway & Son are imported to order. Messrs. Kelway & Son's catalogue will be sent for examination on receipt of 25 cents to cover postage.

JAPANESE PÆONIES.

	Per doz.	Per 100.
Double and Semi-Double Japanese Pæonies, in 25 varieties. These are really very choice and distinct from varieties grown in this country, and will give the greatest satisfaction. At the price nothing so fine can be obtained; each 60 cents.....	\$ 6 00	\$15 00
Single Japanese Pæonies, in 25 varieties. The finest Single Pæonies undoubtedly come from Japan. They are equal or superior to single sorts coming from Europe, costing three times as much; each 70 cents.....	7 50	55 00

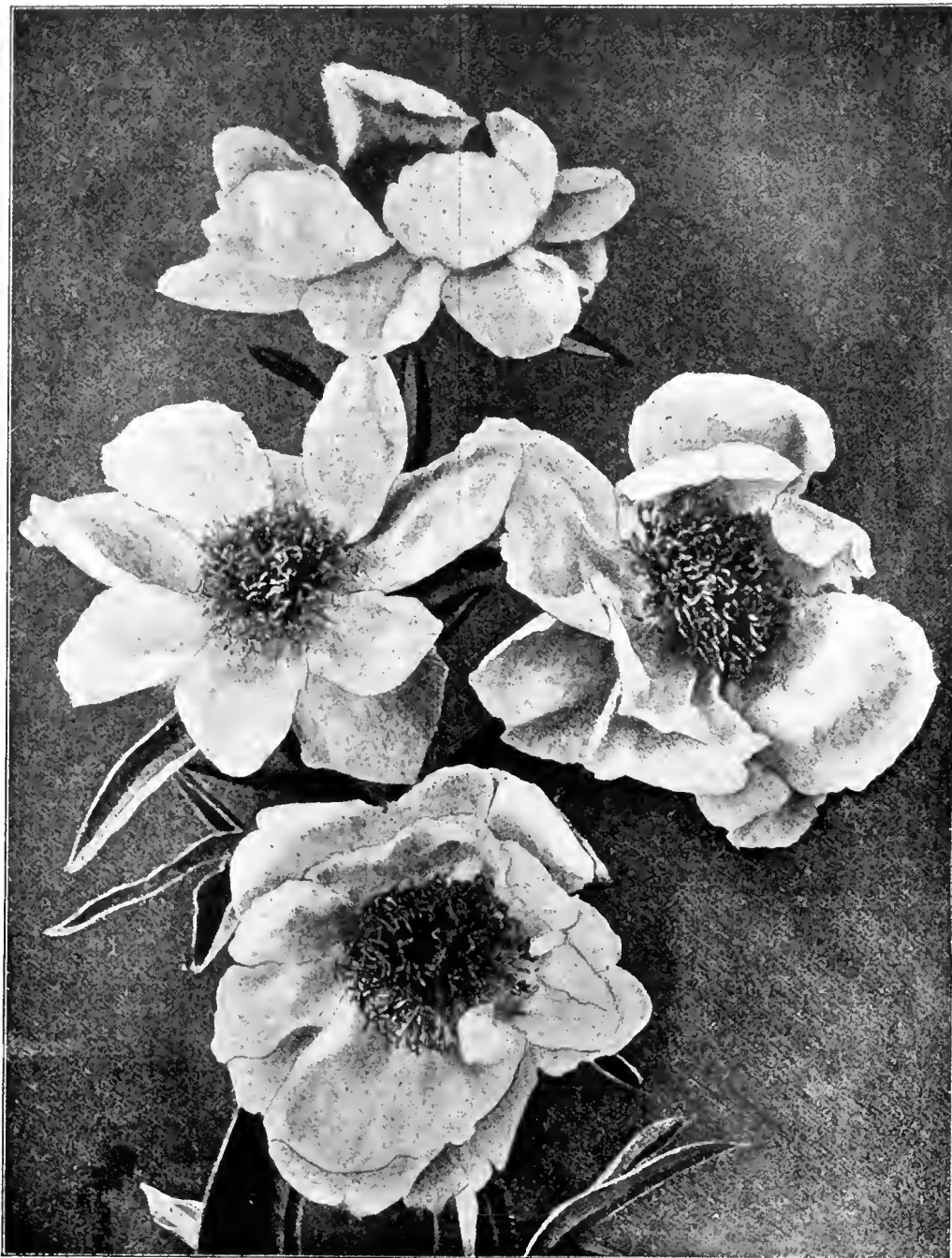
AMERICAN-GROWN PÆONIES.

	Each.	Per doz.
Hummel Rosea, a splendid old sort, with deep rose flowers, one of the latest to bloom; each 25 cents.....	\$ 2 50	14 00
Festiva Maxima, a superb old white variety, one of the best.....	40	4 00
Glory of Erfurt, fine large white flowers.....	40	4 00
Old Double Crimson. This fine old Peony is very effective when planted in masses; one of the earliest to bloom; per 100, \$20.00.....	35	3 50
Lady Leonora Bramwell, (Kelway). This is a splendid sweet scented variety silvery rose in color that has been awarded a first-class certificate by the Royal Horticultural Society of London.....	50	5 00
Festiva, Alba, pure white, center carmine spotted.....	30	3 00
Aglda, brilliant red, very free flowering.....	25	2 50
Duc de Cazes, anemone form, red, center salmon.....	30	3 00
Edulis, dark red, late.....	40	4 00
Palassi, light rose, blush center.....	40	4 00
King of Roses, deep rose, sweet scented.....	50	5 00
Bicolor Mad. Guevin, fine red rosy center.....	60	6 00
Wilhelmina, fine soft rose, extra large.....	75	7 50
Wacht am Rhein, brilliant purple shaded violet. Quite fragrant.....	30	3 00
Rose Brilliant, a fine standard sort, flowers bright clear pink.....	30	3 00

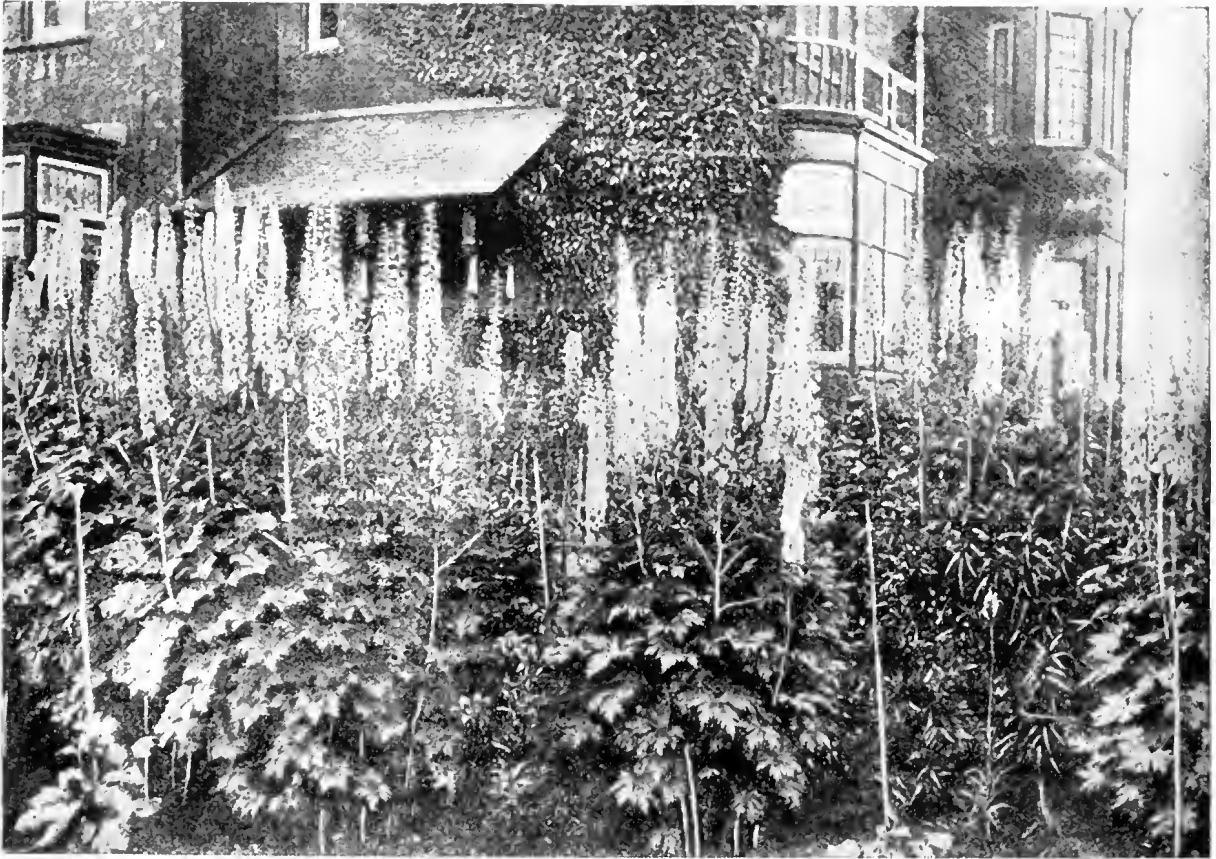
	Each.	Per Doz.
Amabilis Grandiflora, white, very large, fringed petals, fine, very sweet.....	\$ 50	\$ 5 00
Baron J. Rothschild, outside petals rose, center salmon, sweet.....	35	3 50
Duchess de Nemours, rose pink, very large double, sweet, one of the best.....	75	7 50
Francis Ortega, dark purple crimson, very large fine, double and sweet.....	1 00	10 00
Fragrantissima, violet and rose color, very sweet.....	40	4 00
Perfection, outside petals rose, lilac, inside purple and salmon, sweet.....	50	5 00
Reine Hortense, pink, large, full, globular, fragrant.....	35	3 00
Tennifolia flore pleno, deeply cut fringe-like foliage, flowers bright scarlet crimson, rare and fine.....	50	5 00
Tennifolia, same as preceding variety, but with beautiful single flowers.....	40	4 00
Whitleyii, white, large and sweet.....	45	4 50
Caroline Allain, beautiful blush, center sulphur, tipped with white.....	30	3 00
Poyeune d' Enghien, violet rose and earmine.....	30	3 00
Fulgida, very dark crimson, good.....	50	5 00
Mme. Ferard, fine bright rose.....	25	2 50
Officinalis Rosea (old Double Rose), rich bright shining rose, very early.....	35	3 50
Pius IX, dark red purple, semi-double.....	30	3 00
Pottsi, dark purple sometimes semi-double.....	30	3 00
Crown of Roses, dark rose, soft rose center.....	60	6 00
Madam Patis, violet with rose and yellow center.....	75	7 50
Rosalinde, white with light rose, extra beautiful.....	1 00	10 00
Jupiter, dark red.....	50	5 00
Purpurea, dark glowing purple.....	35	3 50
Mme. Louise, dark brilliant purple, self-colored good from.....	35	3 50
Alba Plena Odorata, dwarf white.....	50	5 00
Mont Blanc, pure white.....	40	4 00
Queen of the Whites, extra large, pure white, very beautiful.....	1 00	10 00

HERBACEOUS PÆONIES—Continued.

	Each.	Per doz.		Each.	Per doz.
Candida Flore Pleno, dark red rosy, white center, extra fine.....	\$ 1 25	\$12 00	Alba Maxima, extra large, white.....	\$ 50	\$ 5 00
Nobilissima, fine bright dark rose.....	35	3 50	White Queen, pure white, extra large.....	50	5 00
Rosea Elegans, delicate rose and salmon.....	30	3 00	Malden Blush, white and light rose, beautiful.....	75	7 50
Epicuris, fine soft rose, beautiful.....	50	5 00	Snowball, pure white.....	50	5 00
Blushing Bride, light rose.....	50	5 00	Splendens, pure white with red spot, very beautiful.....	1 00	10 00
Geldolf, soft red, extra fine.....	75	7 50	Corona, light rose, white center.....	40	4 00
Spectator, fine large red.....	40	4 00	Starlight, deep pink, light center.....	40	4 00
Mademoiselle Leonie Calot, soft pink, extra fine.....	40	4 00	Dugueslin, rosy carmine.....	40	4 00
Dr. Boissudval, bright rose.....	30	3 00	Eugene Verdier, deep rosy red.....	50	5 00
Gretchen, white and rose with yellow center.....	40	4 00	J. B. Rendather, clear violet red.....	40	4 00
Sweetheart, red and white with rose center.....	50	5 00	White Perfection, largest, pure white, beautiful.....	75	7 50
L'Innocence, white rosy outer petals.....	60	6 00	La Tulipe, light rose, yellow center.....	60	6 00
			Model of Perfection, beautiful, soft, pink.....	50	5 00



SINGLE JAPANESE PÆONIES.



TALL ENGLISH DELPHINIUMS.—From Photograph.

TALL ENGLISH DELPHINIUMS.

I am tempted to say that the Improved English Delphiniums are the most beautiful hardy plants in cultivation, but I am also tempted to say this of a score of other things, and, of course, it is impossible to say which is the most beautiful of hardy plants, for they have such an immense variety of beauty that the wonder grows that people continue to plant bedding plants by the million which have little or no beauty, are an annual expense, and cost quite as much as hardy plants whose first cost is their only cost and which increases in size, in beauty and often in quantity year after year. These Delphiniums may not be the most beautiful hardy plants, but they are among the most beautiful, and nothing can be more distinct and satisfactory. They are stately and picturesque, some varieties growing eight feet high in rich soil, they have immense spikes of most beautiful flowers of every imaginable shade of blue and their season is a long one; in fact, they will bloom from spring till fall if properly treated.

Hitherto it has been impossible to get satisfactory varieties and plants of English Delphiniums; in fact, no nursery in this country has had a satisfactory general stock of hardy plants, and I have had the greatest difficulty in getting the plants specified for my landscape gardening work, as this class of plants is extremely difficult to import. The difficulty became so great and my work was so hampered by the lack of plants to carry it out that I persuaded one of my most capable horticulturists in this country to start a hardy plant nursery and guaranteed the financial results. It is the intention to make this nursery a model of its kind and grow everything in hardy plants worthy of culture and to send out nothing but well grown plants packed in the most careful manner. The Delphiniums described on next page are one of the offerings of this nursery (The Springdale Nursery)

CULTURE OF DELPHINIUMS.

The culture of Delphiniums is exceedingly simple, and the results out of all proportion to the slight amount of care necessary. They thrive in almost any position, and may be planted at any time of the year, provided that in summer the plants are not too forward, and that they be well watered if the weather be dry; the soil may be a rich friable loam, which suits them finely, but any soil, even hot and sandy, if well watered and manured, will give excellent results. Dig deeply—trenching is better—add plenty of well-rotted manure, and plant about 2½ feet apart. Placed in lines, as a background to a boarder, or in groups of say three plants at intervals, the effect of the Delphinium is exceedingly fine. They look well in beds also, arranged at the same distance apart each way. They are grand grown in masses of large groups of separate colors, and may be associated with shrubs with great advantage, succeeding by their robustness well in shrubberies. A succession of flowers may be expected from spring to early autumn, especially if the spikes which have done flowering early be cut down to the ground; fresh growth will then be produced, which will give blossom. Copious watering in summer will be attended by increased size of spike and flower; in fact, in seasons of prolonged drouth water is absolutely a necessity on many soils if the varieties are to

DELPHINIUMS.—Continued.

exhibit themselves in their true size and beauty of flower and spike. Top dressing is greatly recommended on certain soils, instead of the bare surface of the ground being left exposed to the sun. Some of the neater dwarf alpine and other hardy plants may be utilized to plant between and around Delphiniums. Coal ashes strewn over the crowns will protect the plants from slugs through winter and spring. As we have intimated, any garden soil suits the Delphiniums; it is however, necessary to secure sorts such as are offered below, in order to obtain an effect superior to that afforded by the old smaller-flowered varieties. No amount of liberal treatment will cause the smaller flowered kinds of a few years back to develop into the gorgeous hybrids of to-day.

"The Delphiniums were the first thing that attracted my attention, for they were just at their best and there were just about one acre of them. They made such a sight as I shall not soon forget, so vast was the quantity in bloom, so grand the spikes, and so rich and varied the different shades of blue. Although I have been a grower of these lovely hardy border plants for some twenty years, I was not prepared to see so much improvement in color, and was much struck with the intensity of the shade in many varieties as compared with the old *Bella Donna*. The varieties which have a shade of bronze in the center are also very fine, the contrast between the bronze center and the deep blue exterior being very striking. But the shades of color in many of the newer sorts almost baffle description, and I shall not attempt it. It is in the doubles and semi-doubles that the greatest advancement has been made, and many of them are truly lovely. They are much larger and more compact than the old doubles of the *Ranunculoides* type, and consequently are much more valuable for ordinary garden adornment. The light blue flowers with the large white eyes are very striking, and of this section *Britannia* is, I think, the very best Delphinium I ever saw. * * * The Delphiniums do not receive any special treatment here, being simply planted on a strong loamy soil in an open position. Some few were tied to stakes, but the majority do not require it, being so dwarf in comparison with the old sorts. This dwarfness of habit is a great gain, and the greater portion of the plants were not more than four to five feet high, yet carrying immense spikes of large bloom."—*The Gardening World*.

SPECIAL OFFER OF IMPROVED ENGLISH DELPHINIUMS.

I want every one who receives this price list to try these improved English Delphiniums, and to that end offer them at extremely low prices. I guarantee that they will give unqualified satisfaction in every instance and will be a revelation of beauty to most people.

	Per doz.	Per 100.
Fine Mixed English Delphiniums , grown from seed of Kelway's famous named sorts.....	\$1 50	\$10 00
English Delphiniums , in separate colors, grown from Kelway's newest named sorts	2 00	12 00
Selected Varieties , selected from thousands of seedlings, grown from Kelway's choicest named sorts...	3 00	20 00



LILIUM SPECIOSUM ALBUM.—See page 6.

FORMATION OF LAWNS FROM SEED.

The ground should be thoroughly drained and well prepared. The soil ought not to be too rich, as a rapid growth is not wanted in the grasses of a lawn; but the surface should be as much alike in quality as possible. After sowing, the ground should be rolled in order to press the seed firmly into the soil. The proper time to sow grass seed depends, of course, upon the latitude. In the Central and Eastern States from March 15 to April 15 is the best time. Seed may also be sown in the fall, provided it is done early enough to secure a good, strong growth before winter sets in. The sowing should be done when the ground is moist, or before an expected rain, and a subsequent rolling is always advisable.

ROLLING.—As soon as the frost is out of the ground in the spring, the land should be gone over with a heavy roller. Winter frosts loosen the soil, and rolling is necessary to compress it again. If grass seed is to be sown, this should be done first and the rolling immediately afterwards. Frequent rollings are recommended.

MOWING.—All turf-forming grasses are improved, both in vigor of root growth and in fineness of texture, by frequent mowings. It is impossible to say just how often the grass should be mown, as that depends upon the rate at which it grows. Too close cutting should be guarded against, however, especially during the hot summer months, when the roots require some top-growth to protect them from the burning sun. A good top-growth is also necessary to protect the roots from severe winter frosts. Mowing should therefore be discontinued in time to let the grass grow pretty long before winter sets in.

TO GRASS A BANK OR TERRACE.—For each square rod, take a pound of lawn grass seed and mix it thoroughly with 6 cubic feet of good, dry garden loam. Place in a tub, and add liquid manure, diluted with about two-thirds of water, so as to bring the whole to the consistency of mortar. The slope must be made perfectly smooth, and then well watered, after which the paste should be applied, and made as even and as thin as possible.

I can supply the best quality mixed lawn grass seed at \$2.50 per bushel. (Shipped from Cincinnati.)



JAPANESE IRIS FROM A PHOTOGRAPH TAKEN IN A FAMOUS BOSTON GARDEN.

The Japanese Irises are without question the most unique and beautiful hardy plants in cultivation. What the Orchid is to the conservatory the Japanese Iris is to the garden, and it is perfectly hardy and of the easiest culture. I cannot understand why millions of Geraniums and other commonplace bedding plants are used annually in this country and the exquisitely beautiful Japanese Iris is rarely seen. Men build expensive conservatories to house plants not half so beautiful or so rare. Yet the Japanese Irises are as low priced as the poorest bedding plants, as hardy as oak trees and as easily grown as anything that can be planted. In a few of the finest private places in America, they are grown by the hundred and thousand. Nothing in these places creates more enthusiasm and admiration, not even a greenhouse full of Orchids in bloom.

Japanese Iris.

Three years ago, a set of Japanese Irises (*Iris Kämpferii*) were sent to me from Japan to test, which were said to be identical with the collection in the Royal Gardens. I cannot vouch for this statement, as I have never been in Japan, but I have never seen another collection in America or Europe that would equal it in any way. The collection contained many colors and varieties I had never seen before, and the flowers were of remarkable size and beauty. When these Irises were in bloom they excited the greatest admiration and enthusiasm, and it was hard to convince people that these unique and exquisitely beautiful flowers were as hardy as apple trees, and as easily grown as potatoes. They will thrive in any good garden soil, but if the soil is made very rich and deep and flooded with water for a month before and during their blooming season, they will produce flowers of wonderful size, sometimes ten to twelve inches across. These Irises should be planted in full exposure to the sun.

As the Japanese names are unintelligible and impossible to remember I have renamed this collection.

(Japanese Iris continued on next page.)

JAPANESE IRIS.—Continued.

PRICES OF JAPANESE IRIS.

Named varieties described below, 35 cents each; \$3.50 per dozen; \$6.50 per 25; \$20.00 per 100.

Set of 30 newest varieties from Japan, 60 cents each. \$15.00 for the set of 30 varieties. This collection has not yet bloomed in this country but contain the newest varieties produced in Japan, and judging from colored drawings sent with them they contain many striking novelties.

American Grown Japanese Iris, in 25 named varieties, \$1.25 per dozen; \$10.00 per 100.

American Grown Japanese Iris. Fine mixed, \$1.25 per dozen; \$6.00 per 100; \$50.00 per 1,000.

Allegheny. Double pale lavender striped white, very late.
Wm. J. Matheson. Double, reddish plum, base of petal yellow, large and fine.
Ida. Double, light purple blotched with lilac.
Barton. Double, magenta, striped white.
Romola. Single, lilac striped with plum, plum centre.
Springdale. Single, bluish purple, slightly striped white.
Mrs. Frank H. Hiscock. Single, white margined with pale lilac, delicate and fine.
Yokohama, double, reddish purple; base of petals yellow; late.
Enchantress. Single, pale blue penciled with dark blue.
Snowdrift. Single, pure white.
John Marron. Double, white distinctly penciled with blue, blue center; base of petals yellow; late.
Mont Blanc. Double, pure white; large and fine.
W. J. Buttfield. Double, bluish purple; lightly striped white. Vigorous grower and free bloomer. The earliest flowering variety in the collection.
Mrs. James H. Bellantine. Single, extra large white flower, delicately suffused with pale blue; margin of petals pure white, fine.
Fairy Queen. Single, white; base of petals yellow; maroon center.
Gigantea. Double; center of petals white; heavily margined with magenta. Vigorous grower.
Aurora. Single, white, freely striped and suffused with magenta.
Venus. Single, lilac freely striped and suffused with purple.
William Falconer. Double, rich royal purple; extra fine.
John C. Slack. Double, lilac heavily blotched with magenta and blue; yellow center distinct.
Cheswick. Single, large lilac flower blotched and striped with blue.
Delicatissima. Large double white flower, sometimes slightly tinted with blue; late.
Coquette. Double, magenta, yellow center, feathered with lilac inclined to sport; distinct.

James F. Parker. Double, rich dark blue; yellow center; large and fine.
Blue Flag. Double, indigo blue; base of petals yellow. The last variety to bloom.
Mrs. William T. Blodgett. Large double white flower; base of petals yellow.
Harlequin. Double, pale blue; base of petals yellow; center of petals white; late.
Edgeworth. Double, light blue, striped white; yellow center; dark blue margin.
Paragon. Large single white flower, freely striped and suffused with maroon.
Distinction. Extra large double flower; base of petals yellow blotched and striped white and magenta; distinct.
Moonlight. Double white flower with yellow center.
Octavia. Single, white, dark center; petals distinctly netted with blue.
Pierre Lorillard, Jr. Double, rich purplish plum; base of petals yellow; large and fine.
Mikado. Rich glowing royal purple.
Modesty. Single, white, maroon center slightly suffused with maroon.
Dorothy. Single, blue slightly striped with lilac.
Rosalind. Double, light purple freely striped with white.
Kitty. Single white flower slightly suffused with pale blue.
Heart of Gold. Extra large double white flower with yellow center.
Wm. A. Procter. Double, dark blue; slightly striped white yellow center.
James R. Mellon. Extra large double flower; lilac striped with purplish blue; purple center; distinct and fine.
Hermione. Single, white, maroon center; petals penciled with blue.
Mrs. Alexander King. Double, blue, freely veined and suffused with white.
Mrs. Howard Eckert. Single lilac flower striped with magenta.
Samuel W. Black. Single, white penciled with blue magenta center; late.
Robert Scoville. Double, rich reddish plum; base of petals yellow.

NEW CLIMBING ROSE.

William C. Eagan. This is a new, distinct and very desirable candidate for a position in our list of choicest climbing roses. Being convinced of its many excellent properties, I had grown a large stock of healthy young plants, and take special pride in their dissemination. It was raised by Mr. Jackson Dawson of the Arnold Arboretum, Boston, Mass., and is the product of *Wichuraiana* crossed by *Gen. Jacqueminot*, without any trace of either in the bloom. The habit of the plant is sub-climbing, but vigorous and healthy, with bright glossy foliage. The flower is large and very full, resembling in shape as well as color, the *Souvenir de la Malmaison*. Although only an annual bloomer, it remains in flower several weeks, and the large trusses of superb bloom are unusually attractive. Mr. Dawson considered this the best of all his numerous hybrids. It is unquestionably reliable and hardy at the North. Field grown plants, strong and healthy, 2 years each 75 cents; \$7.00 per dozen.



WALLED GARDEN OF HARDY PLANTS.—From Country Life.

Some Notable Hardy Plants.

Elsewhere will be found a very complete list of hardy plants, but the following varieties are especially desirable, and I am in position to furnish them in quantity at specially low prices.

HOLLYHOCKS.

Have you ever noticed that painters choose single Hollyhocks as subjects for floral painting oftener than any other flower. I suppose the reason for this is that artists have a keener appreciation of beauty than other people and recognize that the common, and I fear sometimes despised single Hollyhock, is one of the most stately, picturesque and beautiful plants in the world. Nothing can be more effective than a large group or mass of single Hollyhocks, and once planted they will literally take care of themselves, even if planted in the grass. I know of patches that have not been cultivated or disturbed in any way for 20 years. Notwithstanding their great beauty and usefulness, single Hollyhocks are not offered for sale by any nurseryman in America and the seed is not to be had from any seedsman. I am determined to have single Hollyhocks for my landscape gardening-work, so I collected seed from old-fashioned (they will soon be new-fashioned) gardens and had thousands of plants grown for my customers. Some people think double Hollyhocks are more beautiful than single. They are mistaken, although the doubles are beautiful, but inclined to be top heavy, often need staking and liable to disease. Hollyhocks planted in the fall will bloom well the following summer.

SPECIAL OFFER OF HOLLYHOCKS.

	Per doz.	Per 100.
Hollyhocks , best large flowered, single, all colors mixed.....	\$ 1 00	\$ 6 00
“ best large flowered, single, in separate colors.....	1 25	7 00
“ best double grown, Chater's famous strain in separate colors, white, sulphur yellow, scarlet, rose, Isabel color, salmon rose, crimson, golden yellow, dark crimson, cherry red and peach.....	1 50	10 00
“ New Allegheny, immense semi-double flowers with fringed edges, very beautiful; 20 cents each.....	2 00
“ New Single Japanese, dark red, white edge, said to be very fine, each 20 cts....	2 00
“ Picifolia, the fig-leaved Hollyhock, with bright yellow flowers.....	35	3 50
“ Primrose Queen, a splendid addition, large, bright single primrose—yellow flowers.....	35	3 50

SOME NOTABLE HARDY PLANTS.—Continued.



TRITOMAS.

TRITOMAS.

The Tritomas which are variously known as Torch Lilies, Flame Flowers or Red Hot Pokers are among the most striking and decorative garden plants grown. They bloom in late summer and fall and are often seen in bloom after hard frosts when everything else has disappeared from the garden. They are not perfectly hardy but live through the winter in well drained soil if protected with a covering of manure, or they can be dug up, packed in sand and stored in a cold cellar over winter. I offer a fine collection of varieties.

	Per Doz.
<i>Tritoma Uvaria Grandiflora</i> , coral to orange flowers, strong, vigorous grower, per 100, \$10.00.....	\$ 1 50
<i>Tritoma Corallina</i> , coral red, very pretty and elegant, each 5 cts.....	3 50
<i>Tritoma Saundersii</i> , orange-red to deep red, remarkably fine, each 25 cts.	2 50
<i>Tritoma Tucki</i> , deep salmon, fading to nearly white, the earliest of all, each 30 cts.....	3 00
<i>Tritoma Mao Owani</i> , apricot, exceedingly pretty, small flowers, each 25 cts.	2 50
<i>Tritoma Rooperi</i> , red lipped, yellow, very lasting and brilliant, broad glaucous leaves, each 50 cts.....
<i>Tritoma Nobilis</i> , similar to <i>Grandiflora</i> , but stronger and bolder, 20 cts. each.....	2 00

ORIENTAL POPPIES.

I remember very well the first time I saw an Oriental Poppy. I was a boy then and it excited me wonderfully, and I thought it the most remarkable flower in the world, and now after twenty-five years have gone by and I have seen almost all the known flowers of the world I am still of the opinion that it is mighty fine, striking and effective, and I have taken the trouble to gather up and have grown a collection of all the varieties. The flowers are immense in size, often 8 to 12 inches in diameter. The colors are salmon pink, orange-red and brilliant crimson-scarlet. I offer a fine lot of plants in mixed colors at \$1.50 per dozen, \$9.00 per 100.

AQUILEGIAS.

All of the single long-spurred Aquilegias or Columbines are extremely beautiful, and a collection of them should be a feature in every garden. Foremost among these choice plants is our native Aquilegia. If these and other choice hardy plants were as well known as bedding plants the day of geraniums, coleus and other commonplace plants would soon be over. The flowers of these Aquilegias are most lovely and delicate, ranging from white to crimson, including shades of blue and yellow, assorted varieties; each 15 cts.; \$1.25 per doz.; \$9.00 per 100. For complete list of varieties see general list of hardy plants.

AGROSTEMMAS.

These plants are extremely desirable both on account of their beautiful silvery foliage and their charming rose-tinted, crimson or white flowers, which are fine for cutting. A splendid stock of plants; each 15 cents; \$1.25 per doz.; \$9.00 per 100.

LIATRIS PYCNOSTACHYA.

The popular name of this striking plant is Kansas Gay Feather. Nothing can be planted that will attract more attention on account of a very unusual appearance, but it is very beautiful as well as odd. It blooms in mid-summer and throws up long narrow spikes of rich purple flowers which last a long time; a peculiarity of this plant is its great attraction for butterflies; 15 cents each; \$1.50 per dozen; \$10.00 per 100.

SCOTCH THISTLES.

My curiosity led me to grow a lot of Scotch Thistles, and I found they were the most decorative plants I had in my garden. They are bold and fine in form and the leaves look as if they were plated with silver. They grow four to five feet high and produce in June large purple flowers. They are biennials and die the second year immediately after flowering, but are renewed annually from self-sown seed; 25 cts. each; \$2.50 per dozen.

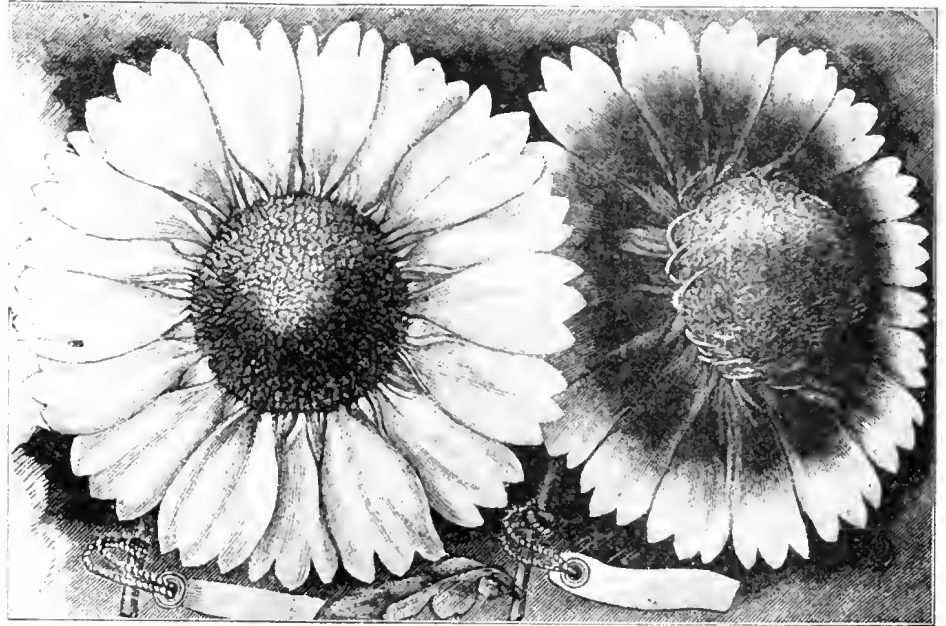


AQUILEGIAS.

IMPROVED GAILLARDIAS.

I consider the Gaillardia one of the most beautiful and desirable hardy plants in cultivation, and have had a large stock of Kelway's famous strain grown for my customers. I offer these plants for less than they have ever before been sold either in this country or in Europe.

Though such an ornamental addition to the herbaceous border, the perennial Gaillardia is content with extremely simple treatment. Dig the soil deeply and enrich with well-rotted manure. We recommend the Gaillardia for bedding purposes as well as for borders; give a moderate amount of room and peg down, and a grand effect is to be obtained. Everyone will have noticed how grandly Gaillardias have thriven through the recent drouths; they seem hardly to need water, but we recommend watering liberally to insure the finest flowers. The Gaillardia which Kelway & Son have been so successful in improving and popularizing is, of course, simply invaluable as a cut flower on account of its being so lasting when gathered, and so brilliant and beautiful. The gay blossoms are obtainable in perpetual profusion from June to November, and the greater the drought and scarcity of other flowers, the more the utility of the perennial Gaillardia is demonstrated. Mr. Robinson, in the "English Flower Garden," recommends that they should be planted in bold groups, and remarks that no plants have finer effect in a bed by themselves, and we quite agree with him. Extra strong fine plants in a splendid assortment of colors. 15 cents each; \$1.25 per dozen; \$7.00 per 100.



IMPROVED GAILLARDIAS.

HIBISCUS MOSCHEUTUS.

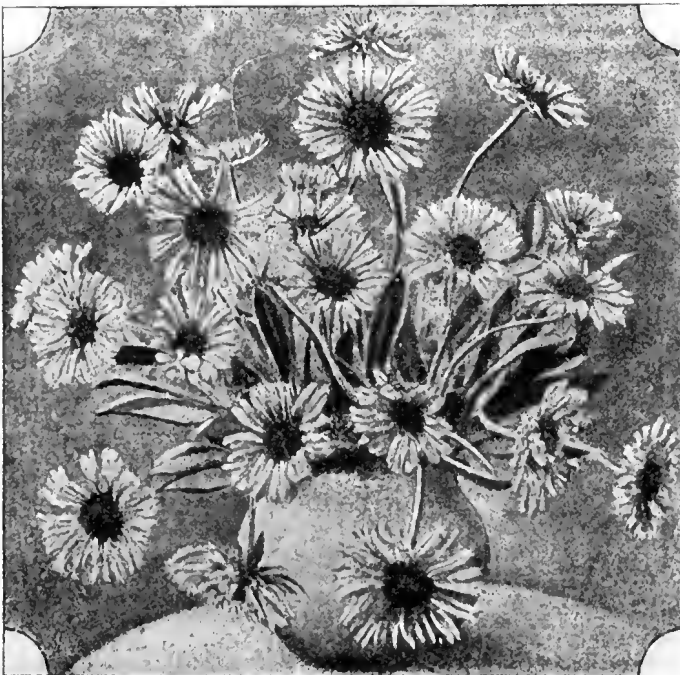
I wish to call attention to this extremely showy and satisfactory plant. It grows wild in the Jersey swamps, but thrives in any garden soil and is equally desirable as a garden plant or naturalized along the edges of brooks and ponds, or planted among wild or cultivated shrubs. It is of the easiest culture and will thrive in almost any position. The plant grows four to five feet high, is very bushy, and in August and September is covered with immense single flowers six or eight inches across, ranging from pure white to deep rose in color.

	Per doz.	Per 100.
Hibiscus Moscheutus, in separate colors, white		
blush pink and deep rose; each 15 cents.....	\$ 1 50	\$10 00
Hibiscus Moscheutus, mixed colors, strong plants		
at a specially low price.....	1 00	5 00

PYRETHRUMS.

The Pyrethrums are so simply and easily cultivated that they may be recommended to all who possess a garden, whether small or large. They are perfectly hardy, and absolutely invaluable for cut flowers through the summer and autumn months; the flowers are bright and elegantly born on long stems most convenient for vase decoration. In form the double varieties are somewhat Aster or Chrysanthemum-like, and as their chief beauty is in the months of May and June they may be well designated "Spring-Chrysanthemums," possessing the advantage over the Chrysanthemums of being able to withstand the severest winter without protection. The single-flowered varieties are veritable "Colored Marguerites," and possess a range of color and hardiness that Marguerites might envy in vain. Nothing can surpass the Pyrethrum for profusion of flower in the season; flowers succeed flowers without stint, and the blossoms are not injured by storm or sun. Their position should be the border or in beds. The plants may, with advantage, be cut down after June, which will keep up a greater succession of bloom through the autumn. Pyrethrums grow freely in any ordinary garden soil; a good rich loam suits them perhaps best, and in order to secure size, brilliancy, and number of flowers, plenty of ordinary well-rotted manure may be added to well-trenched, well-drained soil, and plenty of water may be given when they are in bud in the dry summer

(Continued on next page.)



BOWL OF GAILLARDIA FLOWERS.—From "The Garden."

PYRETHRUMS.—Continued.

weather. A mulching may be applied in dry localities with advantage. The older varieties have been greatly improved upon during the past 10 or 15 years, which is the period during which Kelway & Son have made them a specialty, and the refined shape and brilliant or soft shades of the newer sorts, have caused the Pyrethrum to become deservedly popular. I offer a splendid lot of plants of the choicest single varieties, grown from Kelway's famous strain, 20 cents each; \$1.75 per doz.; \$10.00 per 100.

**TUFTED PANSIES OR BEDDING VIOLS.****PENSTEMON TORREYI.**

This very fine hardy plant is but little known, but is one of the really good things that should be in every garden. The plant grows from four to six feet high, and is covered with its showy erimson flowers all through the summer. 15 cents each; \$1.25 per dozen; \$8.00 per 100.

POLYANTHUS, OR COWSLIP.

This charming spring blooming plant belongs to the Primrose family, the hardy varieties of which are so very popular in England, but are rarely seen in this country, owing partly to an impression that they cannot be grown in this climate. This is a mistake, as they do very well here. For the front of borders and shrubbery, for spring bedding, and for naturalizing in moist and partially shaded places, nothing can be finer. The coloring in the flowers is especially rich and fine.

At this writing I have a long border of these plants in bloom in my garden, and nothing gives me greater pleasure. They are so charming in habit, rich and varied in coloring, and so early to bloom, coming with the spring flowering bulbs, that nothing can be more acceptable. I use them freely for decorating the dining table and library windows, taking plants up from the border and putting them in fern dishes and pots where they go on blooming as if they had never been disturbed. Their hardiness has been pretty well settled by the severe winter of 1898-99. The minimum temperature at my country place was twenty-four degrees below zero. Not a single Polyanthus was injured, and they were planted in wet soil at that. Price, 15 cents each; \$1.00 per dozen; \$6.00 per hundred.

RUDBECKIA—"Golden Glow."

This hardy plant of recent introduction is entitled to rank with single Hollyhoek for picture-queeness. In good soil it grows from 8 to 10 feet high, branches freely, and for two months in mid-summer is literally covered with its large bright yellow double flowers. As a garden or lawn plant it is extremely decorative, and equally so as a cut flower, and is very lasting. I have used this a great deal in my landscape work, and have found a large circular group of it surrounded by the dwarfier Rudbeckia Speciosa extremely effective. 15 cents each; \$1.50 per dozen; \$8.00 per 100.

CHRYSANTHEMUM LATIFOLIUM.

I have at last succeeded in getting a stock of the true variety of this most beautiful of all the single Daisies. It is one of the most satisfactory hardy plants for the garden or border, and produces its large beautiful single white flowers in the greatest profusion. It should be included in every collection of hardy plants. 15 cents each; \$1.50 per dozen; \$10.00 per 100.

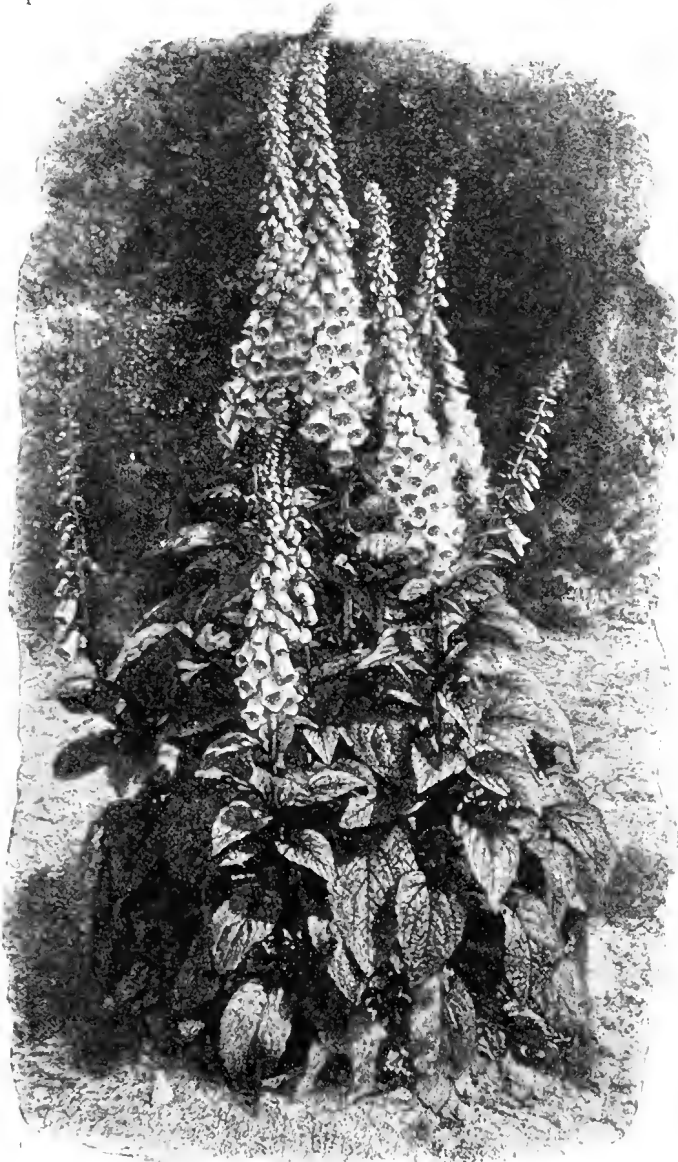
TUFTED PANSIES OR BEDDING VIOLAS.

The tufted pansies are hybrids of pansies and *viola cornuta*, and are quite distinct from pansies in habit and coloring, and, I think, far more beautiful. The flowers are smaller, but unique in coloring, and the plants spread from the roots like a violet, making them true perennials. They are perfectly hardy, enduring the extreme cold weather of last winter in an open border without protection. They are immensely popular in England and Scotland, where they are generally used for bedding and table decorations, and nothing can be more charming for either purpose. I have always admired these flowers in England, but was not certain that they would thrive in this climate, but after testing them in my garden I am convinced that they will do as well here as they do abroad. I have had a splendid lot of plants grown from the best collection in Scotland. They can be planted in the summer, fall or spring. Price, 15 cents each; \$1.00 per dozen; \$6.00 per hundred.

**CHRYSANTHEMUM LATIFOLIUM.**

FOXGLOVE (*Digitalis*).

In England the Foxglove grows wild, but notwithstanding this it is a great garden favorite, as it well deserves to be. For stately and picturesque beauty it is not to be surpassed, and planted in masses in the garden among shrubs or naturalized on the edge of woods, in the orchard or along brooks, it is extremely effective and satisfactory. Strictly speaking, it is a biennial, but as it renews itself from self-sown seed it may be treated as a perennial. Mr. Falconer has naturalized thousands of Foxgloves in Schenley Park, and nothing he has planted attracts more attention and admiration. Planted in the fall, Foxgloves will bloom well the following season. I offer a fine lot of strong plants grown from the best strains obtainable in Europe; 15 cents each; \$1.25 per dozen; \$8.00 per 100.



FOXGLOVE.—From the English Flower Garden.

DIANTHUS BARBATUS (Sweet William).

That old-fashioned favorite, the Sweet William, has almost disappeared from our gardens, more's the pity, for its place has been taken by plants of far less beauty. I am glad to note the rapidly waning popularity of the commonplace and vulgar bedding plants, and when they are entirely discarded as they surely will be, and hardy plants take their place, our gardens will again have the charm of loveliness

and the individual picturesqueness of former days. The Sweet William is a fine old plant which produces great masses of bloom of extremely rich and varied colors. The flowers are very lasting and fine for cutting. The plants offered are grown from the finest strain to be obtained in England where hardy plants are universally grown and where new and improved varieties are constantly being produced. Fine large plants; 15 cents each; \$1.25 per dozen; \$8.00 per 100.

DELPHINIUM FORMOSUM.

In the perennial Delphiniums or Larkspurs we have one of the most beautiful and useful families in hardy plants. The old *Delphinium Formosum* is one of the few hardy plants which has been pretty generally offered by the plant trade; yet it is comparatively unknown, although few things can be planted that will give more satisfaction whether the object is decorative effect in the garden or flowers for cutting for the house. Messrs. J. H. Small & Sons, the leading florists of New York and Washington, have made quite a hit with it as a novelty in cut flowers. The flowers are intense deep blue, perhaps the most brilliant blue to be found in flowers freely produced in long spikes; blooms in June and July and continues for a long time in bloom, and if the plants are cut back after flowering will bloom a second time in the fall. The plants grow to four or five feet in height, and if planted in masses about two feet apart will produce a splendid effect. 15 cents each; \$1.25 per dozen; \$8.00 per 100.

PHLOX, "MISS LINGARD."

The hardy Phloxes are well known as the most desirable of hardy plants, and the variety *Miss Lingard* is undoubtedly the best Phlox in cultivation. It produces immense heads of beautiful white flowers in June and bloom again in September and October. It has the best foliage and habit of all Phloxes, and is entirely free from attacks of red spiders; \$1.50 per dozen; \$10.00 per 100.

HEMEROCALLUS AURANTIACA MAJOR.

This is a new Japanese plant and is, undoubtedly, one of the best hardy plants of recent introduction. Almost everybody knows the old Yellow Day Lily which is deservedly popular. This new variety is incomparably finer. The plants are more vigorous and of finer outline, the flowers are double the size, of splendid form and great substance and a beautiful rich golden yellow in color. I have fully tested this plant in my experimental grounds and am greatly pleased with it. An importation secured direct from Japan enables me to offer it at a moderate price, 50 cents each; \$5.00 per dozen.

MONTBRETIAS.

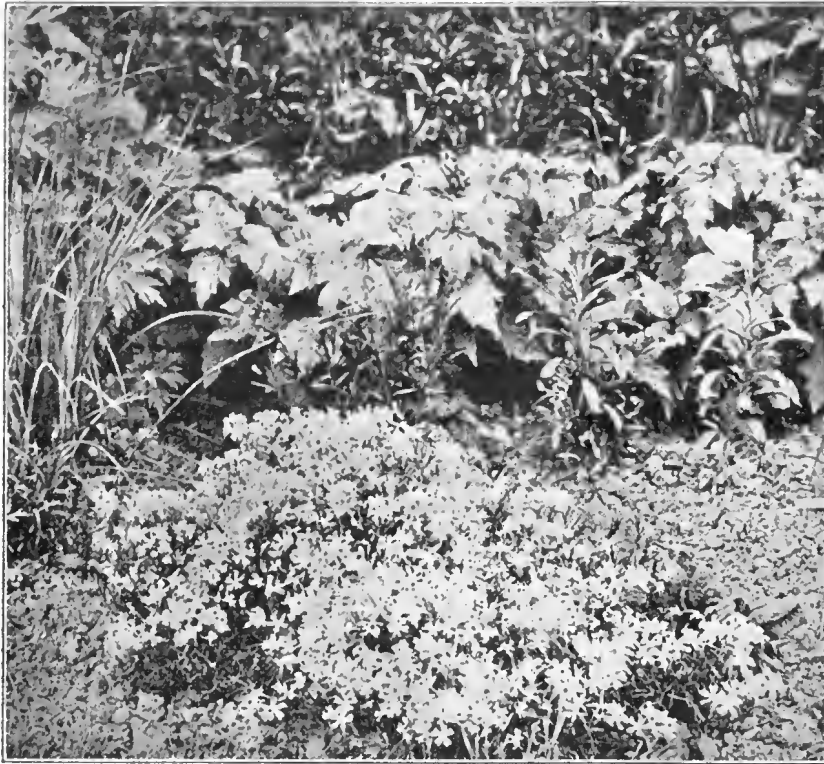
The Montbretia is one of the brightest and best of summer-flowering bulbs, and it has been a matter of wonder to us why it is not more generally used. We feel sure that if once tried they would become firm favorites. The bulbs should be planted from April to June in clumps or groups of three to a dozen or more. They are perfectly hardy, and once planted can be left to care for themselves. In growth they resemble the Gladioli, and produce spikes of the most brilliant flowers in the various shades of orange, yellow, red, etc. 30 cents per dozen; \$2.00 per 100.

HYACINTHUS CANDICANS.

A snow-white summer flowering Hyacinth, growing 3 to 5 feet in height, gracefully surmounted with from 20 to 30 pure white bell-shaped flowers. 5 cts. each; 50 cts. per doz.; \$3.00 per 100.

PLATYCODON MARIESI.

A valuable dwarf variety, bearing deep blue bell-shaped flowers, nearly three inches across, for a long season in late summer and early autumn. One of the finest of border plants. The unopened buds are nearly as beautiful as the flowers themselves, and are particularly interesting in their peculiar shape. 15 cents each; \$1.50 per doz.; \$10.00 per 100.



CREeping PHLOXES.—From Country Life.

HELIOPSIS PITCHERIANUS.

A desirable, hardy herbaceous plant, growing from 2 to 3 feet high, and a perpetual bloomer, beginning to flower early in the season, and continuing in bloom the entire summer. The flowers are of a beautiful deep golden-yellow color, about two inches in diameter, of very thick texture, and are very graceful for cutting. 15 cents each; \$1.25 per doz.; \$8.00 per 100.

PHLOX DIVARICATA CANADENSIS.

One of our native varieties that is but rarely met with, and which has been introduced in Europe the past few years as a novelty. A plant that is certain to meet with much favor when better known, as nothing can produce such a cheerful corner in the garden in the very early spring, frequently beginning to bloom early in April, it continues until about the middle of June, with large bright lilac-colored flowers, which are produced on stems about 10 inches high, in large showy heads, and are very fragrant. 10 cents each; \$1.00 per dozen; \$6.00 per 100.

VIOLA CORNUTA.

These plants are sometimes known as *Horned Pansies*. They are the most satisfactory of the violet family, perfectly hardy; they produce their beautiful purple or white flowers in the greatest profusion early in the spring, sometimes in March and continue in bloom until extremely hot summer weather comes on. The flowers are as large as small pansies and are thrown well above the foliage, which is neat, compact and beautiful.

	Each.	Per doz.
<i>Viola Cornuta</i> , blue	15	\$1 50
" " Alba, white.....	20	2 00
" " "Purple Queen," pale lavender purple	15	1 50

CREeping PHLOXES.

The creeping Phloxes are among the most charming of hardy plants. They cover the ground with a mat of ever-green foliage at all times and during the month of May make a most beautiful carpet of white or pink flowers. The bloom is so dense that the foliage is entirely hidden. This Phlox blooms again in the fall, but not so freely. It is very useful for border edging, rock work or covering bare banks.

	Per doz.	Per 100.
<i>Phlox Subulata</i> , pink.....	\$1 00	\$7 00
" " Alba, white.....	1 00	7 00
" " M o d e l finest of all creeping Phloxes, bright pink	1 00	7 00
" " The Bride, white, red center.....	1 25	8 00
" " Atropurpura, deep rosy purple.....	1 00	7 00

BLACKBERRY LILY.

Pardanthus Sinensis. Lily-like flowers of a bright orange color, spotted with red, which are succeeded by seeds that resemble blackberries. Very showy and desirable. 10 cents each; \$1.00 per doz.

HARDY ASTERS.

Especial attention is directed to the value of Hardy Asters, both for garden and naturalizing. They are of the easiest culture, and make a wonderful show of bloom in late summer and fall when very few other things are in bloom. I offer a splendid collection at \$1.50 per dozen; \$8.00 per 100.

HELIANTHUS LOETIFLORUS.

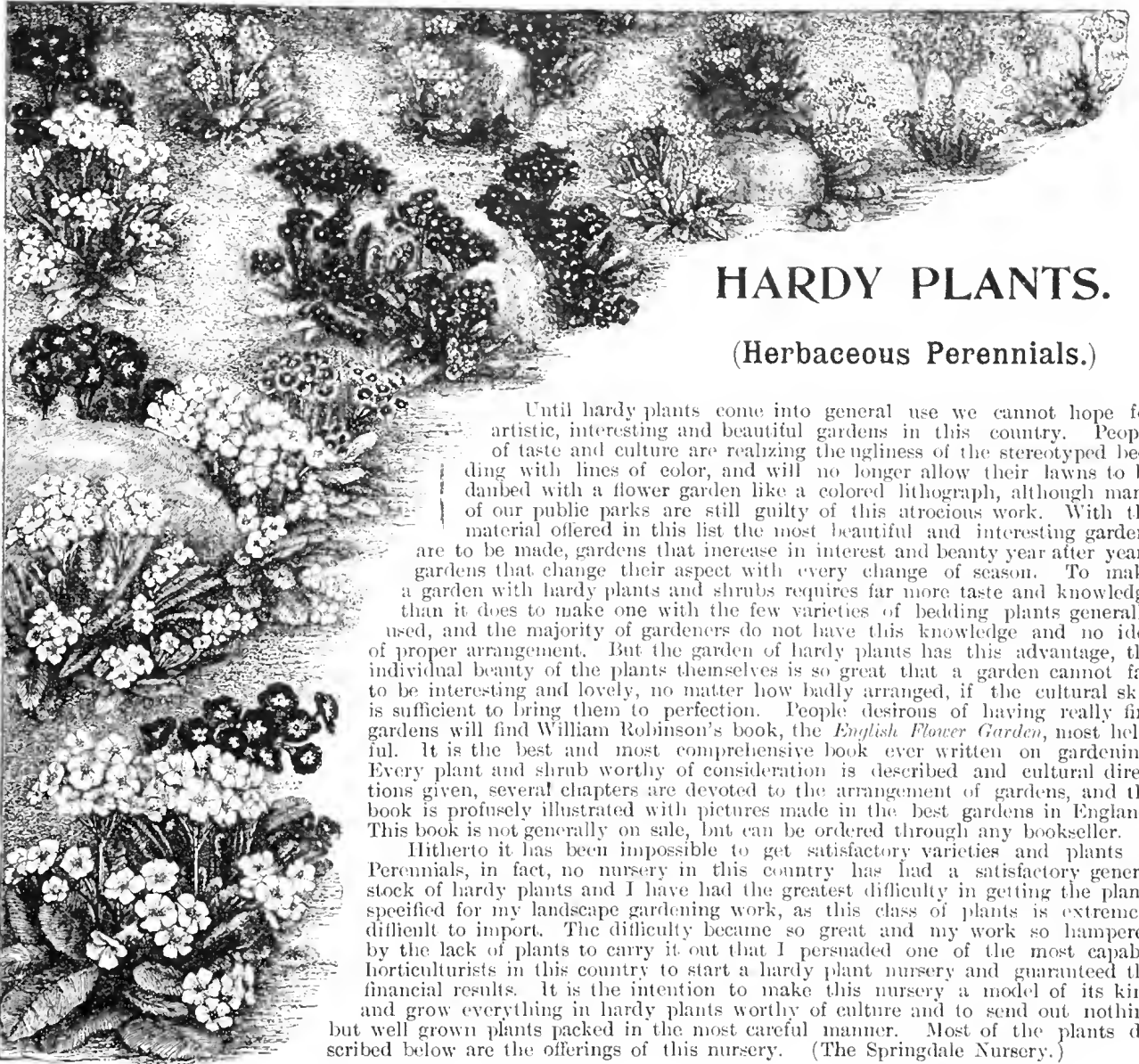
The best of the summer blooming variety of hardy sun-flowers; flowers 3 inches in diameter and freely produced. Plant grows 3 to 4 feet high and spreads rapidly. Fine for cutting, for the border and for planting among shrubs. 15 cents each; \$1.25 per doz.; \$7.00 per 100.

CLEMATIS RECTA.

This charming plant is almost unknown in this country, although a great favorite in England for a great many years. This Clematis has flowers almost identical with the popular Clematis Paniculata, but instead of being a climber it is a dwarf herbaceous plant, growing about 15 to 18 inches high, and blooms in June instead of September. I have known and admired the plant for several years, but until recently have never been able to secure sufficient stock of it to offer for sale. Price, 25 cents each; \$2.50 per dozen.

LYCHNIS FLOS CUCULI.

This is one of the most charming dwarf hardy plants in cultivation. It is literally covered in May and June with its lovely pink flowers, and if the old flower heads are cut off will bloom again freely in September. A large bed should be included in every garden. Fine for cut flowers; \$1.50 per dozen; \$8.00 per 100.



HARDY PLANTS.

(Herbaceous Perennials.)

Until hardy plants come into general use we cannot hope for artistic, interesting and beautiful gardens in this country. People of taste and culture are realizing the ugliness of the stereotyped bedding with lines of color, and will no longer allow their lawns to be daubed with a flower garden like a colored lithograph, although many of our public parks are still guilty of this atrocious work. With the material offered in this list the most beautiful and interesting gardens are to be made, gardens that increase in interest and beauty year after year; gardens that change their aspect with every change of season. To make a garden with hardy plants and shrubs requires far more taste and knowledge than it does to make one with the few varieties of bedding plants generally used, and the majority of gardeners do not have this knowledge and no idea of proper arrangement. But the garden of hardy plants has this advantage, the individual beauty of the plants themselves is so great that a garden cannot fail to be interesting and lovely, no matter how badly arranged, if the cultural skill is sufficient to bring them to perfection. People desirous of having really fine gardens will find William Robinson's book, the *English Flower Garden*, most helpful. It is the best and most comprehensive book ever written on gardening. Every plant and shrub worthy of consideration is described and cultural directions given, several chapters are devoted to the arrangement of gardens, and the book is profusely illustrated with pictures made in the best gardens in England. This book is not generally on sale, but can be ordered through any bookseller.

Hitherto it has been impossible to get satisfactory varieties and plants of Perennials, in fact, no nursery in this country has had a satisfactory general stock of hardy plants and I have had the greatest difficulty in getting the plants specified for my landscape gardening work, as this class of plants is extremely difficult to import. The difficulty became so great and my work so hampered by the lack of plants to carry it out that I persuaded one of the most capable horticulturists in this country to start a hardy plant nursery and guaranteed the financial results. It is the intention to make this nursery a model of its kind and grow everything in hardy plants worthy of culture and to send out nothing but well grown plants packed in the most careful manner. Most of the plants described below are the offerings of this nursery. (The Springdale Nursery.)

Polyanthus or *Cowslip*—See page 20.

SPECIAL OFFERS OF HARDY PLANTS IN VARIETY.

The Springdale Nursery authorizes me to make the following remarkably low prices for hardy plants. They will be of the best and most desirable varieties and the plants of the best quality, but in every instance the selection of varieties is to be made by me, but if purchasers will state the things they have or don't wish these will not be included in the selection.

- OFFER No. 1 OF HARDY PLANTS.** Twenty-five first-class plants in variety for.....\$ **2.50**
- OFFER No. 2 OF HARDY PLANTS.** Fifty first-class plants in variety for..... **4.00**
- OFFER No. 3 OF HARDY PLANTS.** One hundred first-class plants in varied assortment of best species and varieties for..... **7.00**
- OFFER No. 4.** Five hundred Hardy Plants, same as above, but in larger variety, for....., **30.00**
- OFFER No. 5.** One thousand Hardy Plants, same as above, but in much larger variety, for **55.00**

I have a limited number of copies of my lecture, delivered before the Massachusetts Horticultural Society, on hardy plants and shrubs, which will be sent free on request.

In the following list height and the time of blooming are indicated as follows: Figures following the letter H indicate height in feet, figures following the letter F indicate the number of the month or months the plants bloom in. This is only approximate, as height and time of flowering varies considerably with soils, climates and seasons.

PRICES quoted are for not less than half the quantities named, but single plants will be furnished at following rates: Plants at \$1.00 or less per dozen, 10 cents each; Plants at \$1.25 and \$1.50 per dozen, 15 cents each; Plants at \$1.75 and \$2.00 per dozen, 20 cents each; Plants at \$2.50 and \$3.00 per dozen, 25 cents each.

(Hardy Plants continued on next page.)

HARDY PLANTS.—Continued.

Per doz. Per 100.



Aquilegia	Cœrulea , (<i>Rocky Mountain Columbine</i>) the most beautiful of all Columbines, and one of the most charming hardy flowers in cultivation. H 1-½, F 4-5. \$1 75	\$12 00
"	Cœrulea Lutea , new, large, light yellow flowers. H 1-2, F 4-5.	1 75 12 00
"	Canadensis (native), red and yellow. H 1, F 5.	1 50 10 00
"	Skinnerii , scarlet, handsome and distinct. H 3-4, F 5.	1 50 10 00
"	Chrysantha , beautiful golden yellow flowers, blooms for two months. H 3-4, F 5-6.	1 50 8 00
"	Chrysantha Alba , a white variety of the above.	1 25 8 00
"	Stuarti , large, erect, blue flowers, pure white corolla, splendid.	1 50 9 00
"	Glandulosa , splendid dwarf variety with lovely blue and white flowers.	1 50 10 00
"	Jaetschaul , large yellow flowers, with reddish spurs.	1 50 10 00
"	Californica , large orange yellow flowers.	1 50 10 00
"	Truncata , scarlet and yellow dwarf, very early.	1 50 10 00
"	Alpina Superba , blue and white.	1 50 10 00
"	Vulgaris , old-fashioned double Columbine.	1 25 8 00

Six choice Aquilegias in six varieties for 75 cents, or 12 plants in 12 varieties for \$1.50.

Aster Novæ Angliæ Rubra , the best of the American "Hardy Asters," very showy. H 3-4, F 9-10.	1 50 8 00
---	-----------

HARDY ASTERS.—From Wood and Garden.

	Per doz.	Per 100.
Acanthus Mollis , a striking foliage plant.	\$ 2 50
Aconitum Napellus (Monk's Hood), beautiful, but poisonous plant with blue flowers.
Achillea Ptarmica , Fl. Pl. One of the most useful plants, numerous and dense masses of white flowers, fine for cutting. H 1-2, F 6-10.	1 00	\$ 6 00
" Millefolium Roseum , red flowers produced in profusion for a long season; little known to this country, but very popular in England. H 1-3, F 4-10.	1 25	8 00
" Aegyptica , sulphur yellow flowers, silvery gray foliage; very neat. H 1-3, F 6-8.	1 25	8 00
" The Pearl , an improvement of Ptarmica, Fl. Pl. H 2, F 6-10.	1 25	6 00
Aethionema Grandiflora , flowers in rosy racemes. H 2, F 5-8.	1 50
Agroetemma Coronaria , beautiful rich crimson flowers. H 1½, F 7.	1 25	8 00
" Walkerii , brilliant crimson. H 1, F 7.	1 50	10 00
" Alba , pure white.	1 25	8 00
" Atroanguea , very brilliant dark crimson.	1 25	8 00
" bi-color , white and red.	1 25	00
" Floer Jovis , extremely desirable rose tinted flowers, fine for cutting. H 1½, F 7.	1 25	8 00
Alyseum Saxatile Compactum , masses of golden yellow flowers, invaluable for spring flowering. H 1, F 4.	1 25	8 00
Anthemis Tinctoria , yellow free flowering, thrives in any soil. H 1½, F 6-8.	1 25	8 00
Anemone Pennsylvanica , a beautiful native Anemone, fine for naturalizing. H 1½, F 6.	1 25	8 00
" Japonica Rosea , purplish rose. H 3-5, F 9-10.	1 50	10 00
" Japonica Rosea Elegans , improved variety. H 3-5, F 9-10.	1 50	10 00
" Japonica Alba , white. H 3-5, F 9-10.	1 25	8 00
" Whirlwind , new semi-double variety, white. H 3-5, F 9-10.	1 50	8 00

The charming white wind flower is without exception one of the most beautiful things in cultivation. It is perfectly hardy, and in a strong, rich soil will grow four to five feet high. It is a mass of beautiful white bloom for late summer until heavy frosts. Light frosts do not injure the flowers at all. Every garden should contain a group of it, and on large places it should be planted by the hundred.

Arundo Donax , splendid for making tropical-like groups; will grow 16 feet high in rich soil.	3 00	20 00
" Macrophylla , an improved variety with broader leaves, each 50 cents.
" Variegata , striking variegated foliage. H 5-8.	2 50	15 00



ANEMONE JAPONICA ALBA.—From English Flower Garden.
(Hardy Plants continued on next page.)

	Per doz.	Per 100
Aster Amellus , a splendid European hardy Aster, purple, large flowers, H 2 F. 8-9.....	1 50	8 00
" Top Sawyer , clear, blue, very fine H 4-5, F 9.....	1 50	8 00
" Turbinellus , delicate mauve, H 2-4, F 9.....	2 50
" Tartaricus , large flowers and very late, H 5-6 F. 9-10.....	1 50	8 00
" Lady Trevelyan , large, pure white, fine for cutting, H 3-4, F 8-9.....	1 75	9 00
" Ptarmicoides , a dwarf, early flowering, hardy Aster blooming in July and August. Its charming white flowers are produced in the greatest profusion. Distinct and good.....	1 50	8 00
" White Queen , white flowers, H 4, F 9.....	1 50	8 00
" Trinervius , white, with purple and yellow disc, H 3½, F 8-9.....	1 50	8 00
" Isaac Wood , large blue flowers.....	1 50	8 00
" Oblongifolius , one of the most beautiful of our native varieties.....	1 50
" Alpinus , dwarf variety, blooming the latter part of May.....	2 00
Asclepias Tuberosa , orange scarlet, one of the showiest and finest hardy plants grown, H 1-2, F. 7-9.....	1 50	10 00
" Incarnata , rosy pink flowers, very desirable, H 2-3, F 7-9.....	1 50	10 00



VERBASCUM.

	Per doz.	Per 100.
Armeria Maritima , "Thrift" or "Sea Pink".....	\$1 50
Armeria Dianthoides	1 50
Anthriscum Liliastrum , (St. Bruno's Lily) pure white, fragrant, graceful, lily-like plant, preferring partial shade.....	1 75
Asparagus Verticillata , a striking variety of hardy Asparagus.....	1 25
Aubrelia Violacea , valuable evergreen trailer, H 1-6, 1-3, F 4-5.....	1 25
Aralia Coradata	5 00
" Edulis	2 00
" Cashmerica	3 00

The Aralias are splendid foliage plants growing 6 to 8 feet high of striking effect.



CAMPANULA TURBINATA.

Baptissia Australis	1 00	6 00
Bellis Perennis , double daisy assorted colors, H ¼, F 4-5.....	50	3 00
Bergamont . See Monarda.		
Bleeding Heart . See Dicentra.		
Bocconia Micro carpa , \$2 00 per dozen.		
" Thunbergii , \$2 00 per dozen.		
" Japonica , \$3 00 per doz.		
" Cordata , large, broad, striking leaves, large plumes of white flowers; fine for sub-tropical effects. H 5-7, F 7-8 \$1.50 per doz.; \$10.00 per 100.		
Boltonia Latisquamæ , light blue flowers, very lovely, blooms late in fall, highly recommended, H 3-4, \$1.50 per doz.; \$10.00 per 100.		
Campanula Turbinata , large erect blue flowers, fine, \$1.75 per doz.; \$12.00 per 100.		
Campanula Turbinata Alba , charming white flowers, H ½-1, F 7-8; \$1.50 per doz.; \$10.00 per 100.		

Campanula Medium, (*Canterbury Bells*) one of the showiest and prettiest of garden plants, but being only a biennial, dies after blooming. \$1.50 per doz.; \$10.00 per 100.

Campanula Persicifolia Alba, white flowers, a grand border plant, H 1-3, F 7, \$1.50 per doz.

Campanula Grandiflora Marriesii, large white and purple flowers, very desirable. \$1.50 per doz.; \$10.00 per 100.

" **Carpatica**, dwarf, light blue, H ½ F 6. \$1.50 per doz.; \$10.00 per 100.

" **Macrantha**, large blue flowers, one of the best, \$1.50 per doz.; \$10.00 per 100.

" **Rotundifolia**, slender stems with deep blue flowers, charming, \$1.50 per doz.; \$10.00 per 100.

" **Punctata**, strong, erect spikes, fine and showy, one of the best, \$1.25 per doz.; \$8.00 per 100.

" **Glomerata**, rich deep blue flowers in dense head, extra fine and effective, H 1-5, F 5-6, \$1.25 per doz.; \$8.00 per 100.

" **Nobilis Alba**, fine foliage and flowers, \$1.50 per doz.

The Campanula (Bell flowers) genus is one of the largest and choicest. The varieties are all of elegant habit and should be represented in every garden.

Candytuft. See Iberis.

Canterbury Bells. See Campanula Medium.

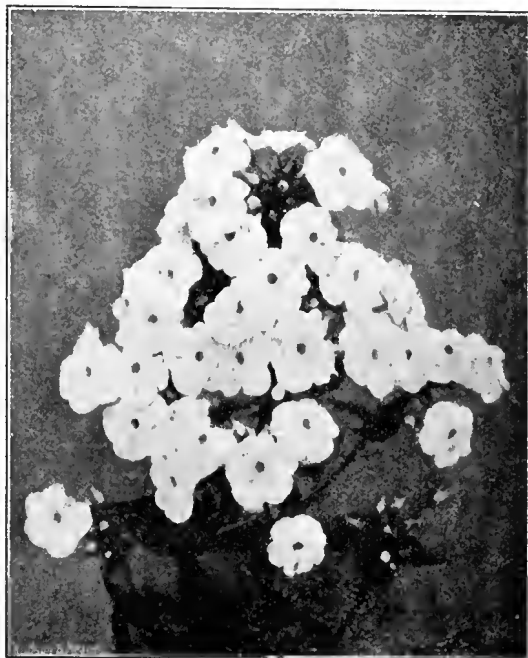
Callirrhoe Involucrata, large crimson flowers, trailing habit, very showy. \$1.25 per doz.; \$8.00 per 100.

Cassia Marilandica, handsome pinnate foliage and numerous racemes of showy yellow flowers; an extremely desirable plant of the easiest culture, H 4-5, F 7-8, \$1.00 per doz.; \$5.00 per 100.



BOCCONIA.

	Per doz.	Per 100.
Calystegia Pubescens Plena , large pale double rose flowers, blooms in the greatest profusion. It flowers for several months, and is one of the best and showiest of hardy climbers.....	1 25
Cardinal Flower . See Lobelia.		



PHLOX, MISS LINGARD.—See page 21.



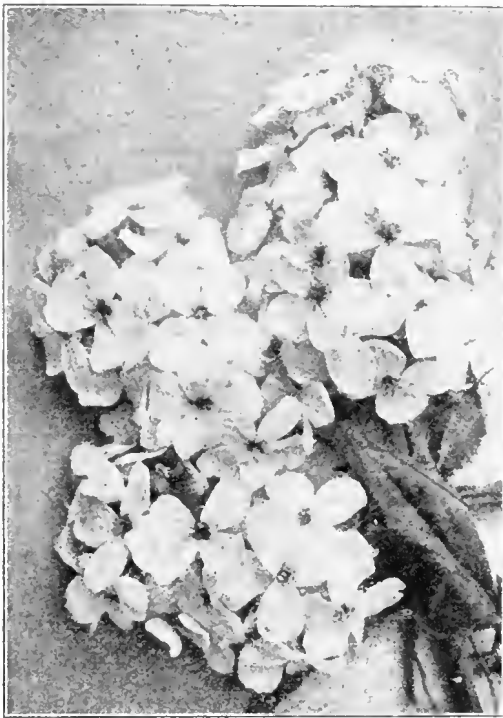
SINGLE PYRETHRUMS.—For special description see page 19.

HARDY PLANTS.—Continued.

	Per doz.	Per 100.		Per doz.	Per 100.
<i>Catananche Cœrulea</i> , white flowers, useful for cutting, H 2½, F 6-9.....	\$ 1 25	Chrysanthemum , hardy pomponé varieties, H 2-3, F 10-11.....	\$ 1 50
“ Bi-color , blue and white, H 2½, F 6-9....	1 00	“ Hardy, large flowered varieties. These and the preceding varieties are the old-fashioned chrysanthemums that used to be in every garden. They are perfectly hardy, and make a brave show of color late in the fall, after all other flowers are gone, H 3-4, F 10-11.....	1 50
<i>Chieranthus Sibericus</i> , a new hardy wallflower of great beauty; brilliant orange flowers produced in great profusion, H 1, F 4-5.....	2 00	\$12 00	“ Maximum , large, single, daisy-like flowers.....	1 25	8 00
<i>Centaurea Babylonica</i> , showy yellow flowers, suitable for planting in shrubberies and large borders, H 6-10, F 7.....	1 50	“ Latifolium , similar to the above but much better; one of the most satisfactory of hardy plants; highly recommended, fine for cutting, H 2, F 6-9.....	1 50	10 00
“ Macrocephala , yellow, very fine, H 3-5, F 7.....	1 50			
“ Montana (<i>Mountain Knapweed</i>), blue flowers, H 2, F 6.....	1 50			
<i>Cerastium Tomentosum</i> , very dwarf plant, covered with small white flowers, very desirable for carpeting or edging borders and beds, silvery white foliage which is very attractive throughout the season.....	1 25	5 00			

Hardy Plants continued on next page.)

HARDY PLANTS.—Continued.



HESPERIS MATRONALIS.

	Per doz.	Per 100.
<i>Clematis Recta</i> , (see page 22).....	\$ 2 50
<i>Clematis Davidiana</i> . This is an herbaceous plant instead of a climber, and has beautiful blue flowers and handsome foliage, very desirable.....	1 75
<i>Coreopsis Lanceolata</i>	1 00	\$ 6 00
<i>Grandiflora</i> , an improved variety with large bright yellow flowers, fine for cut flowers; one of the best hardy plants in cultivation, H 2-3, F 5-7.....	1 00	6 00
<i>Verticillata</i>	1 50
<i>Coronilla Varia</i> , rambling sheets of beautiful pink bloom, H 1, F 5-10.....	1 25
<i>Convallaria Majalis</i> (<i>Lily of the Valley</i>) pipe.....	40	2 00
<i>Crambe Cordifolia</i> , one of the finest large-leaved herbaceous plants, valuable where a striking and bold effect is required; its white flowers are produced in profusion. Each, 35 cents.....	3 50
<i>Pinnatifida</i> , same as above, but dwarfed. Each, 40 cents.....	4 00
<i>Cypripedium Spectabile</i> , the most beautiful hardy orchid, and one of the most lovely flowers in the world; does well in a shady, moist location outdoors, and forces well in the greenhouse for Easter.....	3 00	20 00
<i>Delphiniums</i> , fine mixed, tall English, H 4-8, F 6-9.....	1 50	8 00
<i>Form sum</i> , a splendid old hardy plant, with dark intense blue flowers, H 4-5, F 6-7.....	1 25	8 00
<i>Formosum Coelestina</i> , new light blue variety of great beauty.....	2 50
<i>Chinese</i> , dark blue, small flowered, elegant and distinct dwarf species.....	1 50	9 00
<i>Dianthus Barbatus</i> , "Sweet William," improved Auricula flowered.....	1 25	8 00
<i>Fimbriata Alba</i> , "White Fringe Pink," H 1-2, F 5.....	1 50	10 00
<i>Scoticus</i> , Fl. Pl., "Double Scotch Pink," very desirable.....	1 25	8 00
"Her Majesty," a fine hardy white pink.....	1 50	10 00
<i>Plumarius</i> , semperflorens, one of the most beautiful and satisfactory pinks in cultivation continuing to bloom all season.....	1 50	10 00
<i>Plumarius</i> , Pheasant's Eye.....	1 00	6 00
(Hardy Pink) <i>Laura</i> Wilmot.....	1 50	10 00
" <i>Prince Arthur</i>	1 50	10 00
" <i>Juliette</i>	1 50	10 00
" <i>Souvenir de Sale</i>	1 50	10 00
<i>Deltoides</i> , a creeping pink of great beauty.....	1 50	8 00
<i>Day Lily</i> , white. See <i>Funkia</i>		
" yellow. See <i>Hemerocallis</i>		
<i>Dicentra Cucullaria</i>	15	75
<i>Spectabilis</i> , "Bleeding Heart," H 1-2, F 4.....	1 75	12 00
<i>Dicentra Spectabilis</i> , <i>Alba</i> , white flowered variety "Bleeding Heart".....	2 00

	Per doz.	Per 100.
<i>Dicentra Eximea</i> , beautiful fern-like foliage, blooms all summer, H 3-1½, F 4-8.....	\$ 1 75	\$ 12 00
<i>Digitalis Purpurea</i> , "Foxglove," H 4-7, F 7.....	1 50	10 00
" <i>Veitchii</i> , finest spotted and improved strain of splendid large flowers.....	1 75	10 00
" <i>Gloxinaeflora</i>	1 50	8 00
" <i>Maculata Superba</i>	1 50	8 00
" <i>Monstrosa</i>	1 75
" <i>Lanata</i> , very curious.....	1 50
" <i>Grandiflora</i>	1 50
" <i>Buxbaumii</i>	1 50
<i>Dictamnus Fraxinella</i> , H 2, F 5-7.....	2 00	14 00
" <i>Alba</i> , H 2, F 7-8.....	3 00
The dictamnus in one of the most satisfactory hardy plants in cultivation, both on account of splendid flowers and its rich durable foliage.		
<i>Doronicum Plantagineum Excelsum</i> , a splendid spring flowering plant, with bright yellow flowers, H 2-3.....	1 75	12 00
<i>Dracocephalum Ruyschiana</i> , dark violet blue, neat border plant, H 2, F 6.....	1 50	10 00
" <i>Virginianum</i> , tall, white flowered variety.....	1 50
<i>Epigaea Repens</i> (<i>Trailing Arbutus</i>), the most charming of our wild flowers, deliciously fragrant; very difficult to transplant; must be grown in shade.....	1 75	12 00
<i>Erysium Pulchellum</i> , dwarf plant like a wall-flower.....	1 50
<i>Euphorbia Corallata</i> , a choice native plant, white flowers; largely used by florists for cut flowers.....	1 50	8 00
<i>Eulalia Japonica Variegata</i> , H 5-7.....	1 25	6 00
" <i>Zebrina</i> , H 5-7.....	1 25	6 00
" <i>Gracillima</i> , new and very graceful, H 5-7.....	1 25	6 00
The <i>Eulalias</i> are splendid grasses for making beds and groups for tropical effects.		
<i>Eupatorium Purpureum</i> , a splendid native plant, growing six to ten feet high, with immense head of purplish pink flowers; fine for naturalizing along streams and ponds and for planting among shrubbery, F 7-9.....	1 50	10 00
<i>Epilobium Angustifolium</i> , crimson flowers, suitable for naturalizing, H 3-6, F 7.....	1 50
<i>Erianthus Ravenne</i> , a splendid tall growing grass suitable for tropical effects, H 8-12, F 9-10.....	3 50	20 00
<i>Eryngium Yuccifolium</i> , (<i>Sea Holly</i>) curious and beautiful plants.....	3 00
" <i>Pulchellum</i>	2 00
" <i>Ebeneum</i>	3 00
<i>Evening Primrose</i> . See <i>Oenothera</i> .		
<i>Festuca Glauca</i>	2 00
<i>Foxglove</i> . See <i>Digitalis</i> .		
<i>Ferns</i> , best hardy varieties.....	1 25	8 00
<i>Fragaria Indica</i> (<i>Indian Strawberry</i>), a creeper with yellow flowers followed by bright red fruit.....	1 00
<i>Funkia Subcordata</i> , "White Day Lily," H 1½, F 5-8.....	1 50	10 00
" <i>Variegata</i> , variegated foliage, blue flowers, H 1, F 5.....	1 25	8 00
" <i>Coerulea</i> , "Blue Day Lily," H 1½, F 7.....	1 25	8 00
" <i>Sieboldi</i> , one of the finest of hardy plants on account of splendid foliage, H 2-3, F 7-8.....	2 00	14 00
" <i>Aurea Maculata</i> , young foliage, in early spring, is of a bright yellow color.....	2 50
" <i>Undulata Argentea</i> , silver variegation.....	2 50
" <i>Aoki</i>	2 50
<i>Gaillardia</i> , hardy varieties. (See special description, page 19).....	1 25	7 00
<i>Globularia Tricosantha</i> , "Globe Daisy," light blue flower, H ½-¾, F 5.....	1 50
<i>Helianthus Tuberosa</i> , (<i>Jerusalem Artichoke</i>), very decorative, grows twelve feet high; also a desirable vegetable.....	1 00	6 00
" <i>Multiflorus Plenus</i> , double hardy sunflower, H 5-6, F 8-9.....	1 50	10 00
" <i>Multiflorus</i> , great hardy sunflower.....	1 50	10 00
" <i>Doronicoides</i> , very tall, fine for planting among shrubbery.....	1 50	10 00
" <i>Loetiflorus</i> , the best; free flowering single yellow flowers, fine for cutting, H 4-5, F 7-8.....	1 25	7 00
" <i>Rigidum</i> , distinct and good, H 4-5, F 7-8.....	1 50	10 00
" <i>Mollis Grandiflorus</i>	1 75	10 00
" <i>Orgyalis</i> , a very striking, tall sunflower, H 5-6, F 6-10.....	1 50	10 00
" <i>Maximiliana</i> , very tall and very late; one of the most stately and elegant hardy plants in cultivation, and the best sunflower to bloom in the fall, H 7-9, F 10-11.....	1 50	10 00
" <i>Soleil d'Or</i> , an improved double yellow hardy sunflower.....	1 50	10 00
" <i>Trachelifolius</i>	1 25	7 00
" <i>Giganteus</i> , pale yellow flowers, 3 inches across, very elegant, H 4-5, F 8-9.....	1 50	8 00
" " <i>Golden Bouquet</i> , a new hardy sunflower, blooming very early; slender stems bearing a multitude of small golden flowers.....	1 50
" " <i>Buttaris</i>	1 50

The hardy sunflowers are among the most desirable of hardy plants. They are free flowering, have a long season of bloom, are very decorative in the garden, and are fine for cutting. All have bright yellow flowers.

HARDY PLANTS.—Continued.



A COLONY OF CANDYTUFT.—*Iberis*.

	Per doz.	Per 100.
<i>Iris Germanica</i> (German Iris), in 25 choice named varieties, H 2-3, F 6.....	\$ 75	\$ 3 00
" " Silver King, a most beautiful variety of rich silvery white color.....	1 00	5 00
" " mixed varieties.....	50	2 00
" <i>Siberica Sanguinea</i> , bright blue flowers, H 3-4, F 6, 75	75	3 00
" <i>Alba</i> , white.....	75	3 00
" <i>Florentina</i> (Orris Root), very large white fragrant flowers, very fine and lasting, desirable for cutting, H 2, F 5-6.....	2 00
" <i>Teotorum</i>	1 00
<i>Ipomoea Pandurata</i> , known as a hardy Moon Flower, a free flowering and very desirable hardy climber	1 50	10 00
<i>Lathyrus Latifolius Splendens</i> , bright pink, 25 cents each.....	2 50
" <i>Latifolius Albus</i> , white everlasting pea. These everlasting peas are but little known in this country, but are great favorites in England. They are extremely showy and fine. 25 cents each.....	2 50
<i>Liatris Pycnostachya</i> , a most striking hardy summer-blooming plant, with great rocket-like spike of purple flowers, continues a long time in bloom, H 3-5, F 6-9.....	1 50	10 00
" <i>Spicata</i> , H 1-2, F 9.....	1 50	10 00
<i>Linum Perenne</i> (Flax), H 1-½, F 6-8.....	1 25	8 00
" <i>Album</i>	1 25	8 00
" <i>Roseum</i>	1 25	8 00
<i>Lychnis Viscaria Splendens</i>	1 25
" <i>Chalcedonica</i> , dense heads of brilliant scarlet flowers, one of the best border plants, H 1½, 3, F 5-8	1 25	8 00
" <i>Chalcedonica Flore Pleno</i> , a fine double variety, fine for cutting.....	1 50	9 00
<i>Lysimachia Nummularia Aurea</i> , Golden Moneywort, fine for carpeting.....	1 25	5 00
" <i>Clethroides</i> (Loosestrife), semi-aquatic, with white flowers, H 2-3, F 7-9.....	1 25
" <i>Stricta</i>	1 25
<i>Lunaria Biennis</i> (Honesty).....	1 25
<i>Lavender</i> , the well known garden herb.....	1 00
<i>Lythrum Superbum Roseum</i> , very showy, splendid for banks of streams and ponds, H 3-5, F 7-8.....	1 50	8 00
<i>Lepachys Pinata</i> , single yellow flowers like a <i>Rudbeckia</i> , graceful and showy, H 4-5, F 7-8.....	1 75
<i>Lobellia Cardinalis</i> , native plant, with intensely brilliant cardinal flowers, extremely desirable, H 2-3, F 7-9.....	1 50	8 00
<i>Linaria Hendersonii</i>	1 25
<i>Myosotis Palustris Semperflorans</i> , "Water Forget-Me-Not," splendid for naturalizing on edge of ponds and streams, also for beds and borders, blooms all summer.....	1 25	6 00
" <i>Dissitiflora</i> , best for shady borders.....	1 00	6 00
<i>Mertensia Virginica</i> , a lovely blue flower, blooming in early spring, H 2, F 4.....	1 50	10 00
" <i>Siberica</i>	1 50
<i>Monarda Didyma</i> , "Bergamot," very showy, crimson flowers, H 2, F 7-9.....	1 25	8 00
" <i>Didyma Rosea</i>	1 50	9 00
" <i>Fistulosa</i> (Wild Bergamot), mixed colors, H 2-4, F 6-8.....	1 00	6 00
<i>Montbretia Crocosmaeflora</i> , hardy, bulbous, with brilliant orange and scarlet flowers.....	50	3 50
<i>Morina Longifoli</i> , exceedingly handsome and singular with fine spikes of flowers and ornamental leaves, H 2-3, F 6-7.....	2 00
<i>Oenothera Splendens</i> , "Evening Primrose," a splendid dwarf variety blooming in the day time.....	1 25	8 00
" <i>Missouriensis</i> , "Evening Primrose," H ½, F 6-8	1 25	8 00
" <i>Lamarckiana</i> , "Evening Primrose".....	1 25	8 00
The Evening Primroses are desirable and striking, and very effective in the garden on moonlit nights.		
<i>Onopordon Acanthium</i> (Scotch Thistle), noble plant, with striking foliage and showy purple flowers.....	2 50
" <i>Arabicum</i> , 8 to 10 feet high, both sides of leaves and stems covered with white down, each 25 cents	2 50
" <i>Acaule</i> , each 35 cents.....
" <i>Tauricum</i>	3 00
<i>Orobis Lathyroides</i> , charming border plant and fine for rockery.....	1 75
<i>Primula Vulgaris</i> , English Hardy Primrose, H ½-¾, F 4-5.....	1 50	9 00
" <i>Veris</i> (Polyanthus), H ½-¾, F 5-6.....	1 00	6 00
" <i>Janonica</i> , beautiful and desirable variety.....	1 75
" <i>Acaulis</i>	1 50
<i>Pansies</i> , best strain, plants for spring bedding.....	50	3 50
<i>Pæonies</i> , good varieties, assorted.....	2 00	12 00
" named varieties, 25 cents to \$1.00 each; \$2.50 to \$10.00 per dozen.		
<i>Polygonum Cuspidatum</i> (Giant Knotweed), grows to 12 feet high, makes a splendid group for tropical effect.....	1 50	10 00
" <i>Amplexicaule</i> , "Mountain Fleecce".....	1 25	8 00
<i>Pardanthus Ohinensis</i> , "Blackberry Lily".....	1 25	8 00
<i>Penstemon Barbatus Torreyii</i> , brilliant crimson and orange flowers in July, one of the best hardy plants, H 3-5.....	1 25	8 00
" <i>Digitalis</i> , showy spikes of pure white flowers.....	1 25	8 00
" <i>Cœnea</i>	1 50
" <i>Spectabilis</i>	1 50
<i>Plantain Lily</i> , see <i>Funkia</i> .		
<i>Plume Poppy</i> , see <i>Boconia</i> .		
<i>Pink</i> , see <i>Dianthus</i> .		
<i>Pyrethrum Ulliginosum</i> , a splendid fall flowering plant with single white daisy-like flowers, H 3-5.....	1 25	8 00
" double varieties.....	2 50	18 00

	Per doz.	Per 100.
<i>Hemerocallis Flava</i> , (Lemon Day-Lily), H 2-3, F 6-7.....	1 50	10 00
" <i>Fulva</i> , (Orange Day-Lily) H 2-3, F 6-7.....	1 25	8 00
" <i>Flore Pleno</i> , double.....	1 75	12 00
" <i>Graminea</i> , bright yellow, one of the best, 1 50	1 50	10 00
" <i>Dumortieri</i> , H 1½, F 6-7.....	1 50	10 00
" <i>Aurantiaca Major</i> , new and very beautiful, 50 cents each.....	5 00
" <i>Thunbergii</i> , bright yellow.....	1 50
<i>Heliopsis Pitcheriana</i> , similar to the hardy sunflowers, but blooming during a much longer season, H 3-6, F 8-10.....	1 25	8 00
HONESTY. See <i>Lunaria</i> .		
<i>Hibiscus Moscheutos</i> , "Crimson Eye" white, H 3-6, F 8-10.....	1 50	10 00
" " bright pink.....	1 50	10 00
<i>Hesperus Matronalis</i> , (Sweet Rocket) purple, H 2-3, F 6-9	1 00	6 00
" " white.....	1 00	6 00
<i>Hyacinthus Candicans</i> , showy white flowers, blooming in summer, easiest culture.....	50	3 00
<i>Helleborus Niger</i> , "Christmas Rose".....	4 50	30 00
<i>Hollyhocks</i> , best double.....	1 50
" best single.....	1 25
<i>Heuchera Sanguinea</i> , very choice, graceful dwarf plant with lovely crimson flowers, fine for cutting, H ½-1, F 7-9.....	1 75	12 00
" <i>Alba</i> , new white variety.....	1 75
<i>Helenium Hoopesii</i> , bright orange flowers, H 2-3, F 7-8	1 50
" <i>Autumnale Superba</i> , an improved variety of great beauty.....	2 00
" <i>Grandiflorum Striatum</i> , yellow with reddish stripes, new and distinct.....	2 50
<i>Heracleum Giganteum</i> (Giant Parsnips), a remarkable foliage plant of striking appearance; each 25 cents.....	2 50
" <i>Leichtlini</i> , each 25 cents.....	2 50
<i>Iberis Sempervirens</i> (Hardy Candytuft), one of the most desirable spring flowering plants. It covers the ground with a mat of pure white flowers, H ½-1, F 4-5.....	1 50	10 00
<i>Iberis Sempervirens Nana</i> , improved dwarf variety Queen of Italy, a new dwarf variety with violet flowers, very pretty.....	1 25	8 00
<i>Iris Kaempferi</i> (Japanese Iris). See page 15.		

HARDY PLANTS.—Continued.

	Per doz.	Per 100.
Pyrethrums , single varieties.....	\$ 75	\$10 00
The Single Pyrethrums are among the loveliest hardy flowers grown. They are splendid for beds and borders, and nothing can be finer for cutting. Their single daisy-like flowers, of all colors, are produced in the greatest profusion early in the spring, and again in the fall.		
Phlox , best perennial named varieties, clumps from open ground, a fine collection.....	1 50	10 00
" Procumbens	1 00	6 00
" Subulata	1 00	6 00
" " Alba	1 00	7 00
" " Model , finest of all creeping Phloxes.....	1 00	7 00
" Atropurpuria , creeping, of great beauty and vigor.....	1 00	7 00
The creeping Phloxes are among the most charming of hardy plants. They cover the ground with a mat of green at all times, and during the month of May make a most beautiful carpet of white or pink flowers.		
Phlox Divaricata , a beautiful native Phlox, with purple flowers, H 1, F 5.....	1 00	5 00
" Carolina , a rare native variety with bright blue flowers, extremely desirable for spring bedding.....	1 50	8 00
Plumbago Larpenae , a dwarf plant covering the ground completely with its foliage. In September it is a mass of beautiful deep blue flowers, which gradually change to violet.....	1 25	8 00
Papaver Orientale , Great Oriental Poppy, splendid, H 3, F 6.....	1 50	9 00
" Bracteata	1 75	12 00
Rudbeckia Speciosa (native), one of the very best border plants in cultivation. A group of R "Golden Glow," surrounded by this variety makes a splendid effect, H 2-3, F 7-9.....	1 25	8 00
" "Golden Glow," new double Rudbeckia, grows 10 to 12 feet high, and is undoubtedly one of the most effective plants in cultivation. It is becoming very popular, F 7-9.....	1 00	8 00
" Fulgida , grows 3 to 4 feet, small yellow flowers, with black center. Very effective.....	1 25	7 00
" Nitida	1 50	10 00
" Hirta , the "Black-eyed Susan" of our meadows.....	1 25	8 00
" Laciniata , tall variety with graceful single yellow flowers.....	1 00	6 00
" Purpurea , large crimson maroon flowers, very distinct.....	1 75	12 00
" Maxima , large bright yellow flowers, glaucous foliage.....	1 75	12 00
Rheum Officinale (Chinese Rhubarb). The immense leaves of this noble foliage plant produce a bold and striking effect. Robinson says this is the most effective foliage plant introduced for many years. Each, 25 cents.....	2 50
" Cottium , like the above, but foliage more deeply cut, splendid. Each, 25 cents.....	3 00
" Emodi , grows 5 feet high, wrinkled-leaved, with red veins. Very effective. Each, 50 cents.....	5 00
" Tangutum , fine foliage and rapid growth. Each, 50 cents.....	5 00
" Giganteum , a tall, vigorous variety of striking effect.....	3 00
" Spiceforme	3 00
Rosemary , an old-fashioned plant with scented foliage.....	50
Ruta Graveolens (Rue). This is a well-known herb.....	50
Scabiosa Caucasica , large head of pale blue flowers, one of the best hardy plants in cultivation, grows and flowers freely in any garden soil.....	2 00
" Caucasica Alba , a white flowered variety of the above.....	2 00
Sea Holly . See Eryngium.		
Sweet William . See Dianthus Barbatus.		
Sedum Stolonifera	1 50
" Spectabile , a fine fall flowering plant with great heads of purple flowers, H 1½, F 9-10.....	1 50
" Acre	1 00	6 00
Spiræa Palmata , broad cluster of the most beautiful crimson flowers, above splendid palmate foliage, H 2, F 7-8.....	1 75	10 00
" Palmata Elegans , a lovely new variety with light pink flowers, H 2, F 7-8.....	1 75	12 00
" Astilboides , a splendid white variety.....	1 50
" " Florabunda	1 50
" Ulmaria	1 50
" Arunous , a grand native sort with great heads of white flowers, H 3-5, F 6-7.....	1 75	13 00
" Filipendula , Fl. Pl., a beautiful dwarf variety with elegant fern-like foliage, H ½, F 6-7.....	1 25	8 00
" Lobata , one of the handsomest of the Spiræas, with deep rosy carmine flowers, H 1½-3, F 6.....	1 50
Scutellaria Macrantha , a handsome hardy plant growing about 9 inches high, and producing an abundance of rich velvety dark blue flowers.....	1 00	6 00
Stachys Lanata , white woolly leaves and purple flowers; useful for edging, H 1, F 7.....	1 00	5 00
Statice Latifolia	1 50	10 00
" Armeria , (Sea Pink).....	1 25	8 00
Sylphium Perfoliatum , yellow flowers H 4-8, F 7.....	1 75	12 00
Sanguinaria Canadense , "Blood Root".....	25	1 50

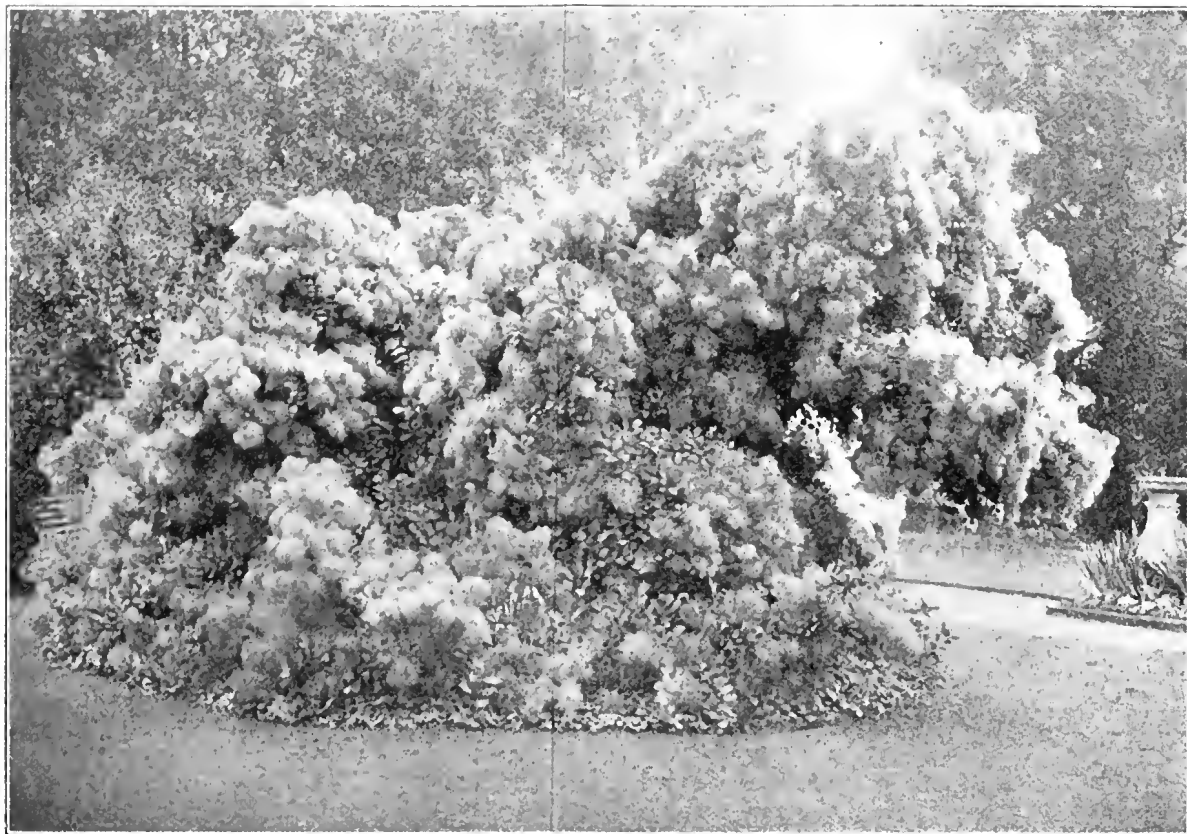


Per doz. Per 100.

Silene Virginica, "Indian Pink," one of the best native plants, that should be grown in every garden; brilliant crimson scarlet flowers that are produced in the greatest profusion in May.....

THALICTRUM AQUILEGIFOLIUM.

Sage , the well-known herb.....	50
Trillium Grandiflorum	35	2 50
" Erectum Al.....	35	2 50
Teucrium Chamædris , evergreen shining leaves, purple flowers; will grow on barren soils.....	1 25	2 00
Tritoma Uvaria Grandiflora , (Red Hot Poker), needs protection; a striking fall flowering plant, H 3-4, F 9-11.....	\$ 1 50	\$10 00
Thalictrum Aquilegifolium . All Thalictrums have handsome foliage, and this variety has quite showy flowers, H 3-4, F 6-7.....	1 25
" Adiantifolium , beautiful foliage like a maiden-hair fern.....	1 25
Tiarella Cordifolia . (Foam Flower), a most charming dwarf spring flowering plant, with beautiful white flowers and lovely foliage.....	1 25	8 00
Thermopsis Caroliniana , showy plant with attractive yellow flowers.....	1 50
Verbascum Nigrum , yellow flowers in long spikes, dwarf habit, each, 20 cents.....	2 00
" Olympicum , bright yellow flowers and large woolly foliage; a stately plant. Each, 25 cents.....	2 50
" Phoeniceum , seedlings, crimson rose, lilac and white; large and showy; each, 30 cents.....	3 00
" Pannosum , sulphur yellow flowers, new species with white foliage; each, 35 cents.....	3 00
Viola Pedata , Bird's Foot Violet, a beautiful native sort.....	1 00	6 00
" Bicolor , deep purple flower.....	1 25	8 00
" Cornuta , flowers almost as large as a Pansy. This is most desirable of hardy plants, blooms continuously all season; blue flowers.....	1 50	10 00
Verbena Venosa , a hardy Verbena, very extensively used in England for bedding. It grows about 18 inches high, but pegged down will cover the ground with heads of lovely purple violet flowers throughout the season. Not quite hardy, except on thoroughly well drained soils.....	1 25	8 00
Veronica Longifolia , spikes of deep bluish purple flowers, very handsome, H 2, F 8-9.....	2 00
" Spicata , violet-blue flowers in long spikes, dwarf habit.....	1 50
" Rupestris	1 25
" Amethystina	1 50
Vinca Coruilla , the well-known hardy Myrtle, fine for carpeting under trees where grass will not grow.....	1 25	8 00
Wahlenbergia Grandiflora	1 75	12 00
" Alba	1 75	12 00
Yucca Filamentosa , (Spanish Bayonet), fine strong plants; a stately decorative plant with immense spikes of large white flowers; fine for the garden or lawn.....	3 00	18 00
" Filamentaria Variegata , a fine variegated variety of above; 50 cents each.....	5 00
" Angustifolia	2 00	12 00



SPECIMEN RHUS COTINUS—From Country Life.

NOVELTIES IN SHRUBS.

(Shipped from Station Near Pittsburgh.)

Of the following Shrubs, those marked with an asterisk (*) have been fully tested in this country, and I have seen them and can vouch for the descriptions. The others come from reputable foreign sources, and the descriptions of introducer are given. The plants sent out of new varieties of shrubs are always much smaller than those of old sorts.

- Crataegus Carrieri.** Beautiful variety of thorn, with large, deep green, glossy foliage, remaining on the tree until December. Gives quantity of large white flowers, turning rosy afterwards. The fruits are small scarlet Medlars, eatable, having the taste of an Apple, of the size of a large Cherry. The nice foliage and quantity of fruits make it a very remarkable small tree or shrub. Each, 40 cents.
- Cydonia Japonica Columbia.** The fruit of this new Japan Quince is said to be edible, measuring 8 to 10 inches in circumference, greenish-yellow, very fragrant. Each, \$1.00.
- Cydonia Japonica Maulei Superba.** (Japan Quince.) Large bright-red flowers, darker than the C. Maulei; vigorous, blooms abundantly. Each, 85 cents.
- ***Cornus Brachypoda Variegata.** The most striking variegated shrub in cultivation, large leaf of grand effect. Each, \$1.00.
- ***Deutzia Crenata Candidissima.** This is not a new shrub, but it is one of the most beautiful of all the Deutzias and is very scarce. It is most beautiful and should be in every collection. Each, 20 cents; per doz., \$2.00.
- Deutzia Discolor Purpurascens.** introduced from Yunnan, shrub attaining 3 to 4 feet in height, branches thin, leaves and dentated racemes 2 to 3 inches in length; flowers white tinted rose, three-fifths of an inch in diameter, buds red. Beautiful plant. Each, 65 cents.
- ***Deutzia Hybrida Lemoinei.** Beautiful variety, Hybrid of Deutzia Gracilis D. Parviflora; blooms early, regularly; the branches are entirely covered with erect panicles, bearing 15 to 25 pure white and well-opened flowers, of a new aspect in Deutzia I. Each, 25 cents; per doz., \$2.50.
- Deutzia Parviflora.** Small shrub, reaching hardly 5 feet in height, branches straight, leaves elliptical, dentated and reticulated with dark green; gives a profusion of beautiful white flowers, fine novelty. Each, 50 cents.
- Deutzia Corymbiflora.** A new variety with thin branches, large dark green leaves, flowers in May and June, snow-white in terminal clusters; sometimes flowering in August and September. Each, 85 cents.
- Forsythia Fortunei Variegata Aurea,** Fine novelty; leaves with a large golden-yellow margin. Requires to be planted in a sunny place; very vigorous and as free flowering as the type. Each, 35 cents.
- Hamamelis Japonica Zuccariniana.** (Japanese Wych Hazel.) Leaves dark green, flowers lemon-yellow in axillary clusters. Very curious on account of its being the only shrub that will produce flowers out doors in winter time in this country. Each, \$1.00.
- Malus Florabunda Scheideckerii,** (Crab Apple.) This new Crab Apple is a seedling of Malus Florabunda, which I have always considered the most ornamental flowering small tree in cultivation. This new variety is said to be a great improvement. Each, 75 cents.

(Novelties in Shrubs continued on next page.)

NOVELTIES IN SHRUBS.—Continued.

- Philadelphus Falconeri**, introduced from China or Japan. Hardy, attaining 9 feet in height, thin branches, leaves small lanceolate; blooms in small panicles at the end of axillary branches, flowers formed of four sharp-pointed petals, pure white. Each, 75 cents.
- Philadelphus Lemoinei** (Mock Orange), a fine new sort of *P. Michrophyllus*; very large flowers, highly scented. Each, 35 cents; \$3.50 per dozen.
- **Philadelphus Lemoinei Avalanche**. Branches attaining 5 to 6 feet, bent by weight of flowers; flowers very large, covering the branches; sweet scented, a superb new sort. Each, 50 cents.
- Philadelphus**, "Silver Ball," flowers large, double, sweet scented, fine; each 30 cents; \$3.00 per dozen.
- Philadelphus Lemoinei Candelabre**, dwarf and free flowering variety; enormous white dentated and undulated flowers, entirely covering the branches; the prettiest variety obtained. Each, 75 cents.
- Philadelphus Lemoinei Erectus**, [forming an erect bush; the branches are entirely covered with little flowers of the purest white and very fragrant. Each, 30 cents.
- Philadelphus Lemoinei**, "Sheaf of Snow," enormous flowers of the purest white, sweet scented; the branches are arched and drooped by the weight and quantity of flowers. Each, 75 cents.
- Philadelphus Lemoinei**, "Mont Blanc," attaining 5 feet high; erect branches entirely covered with large, fragrant flowers. Each, 50 cents.
- Philadelphus**, Species *Pekinensis*, lately introduced from the mountains of Peking. Each, 60 cents.
- **Rhus Cotinus Atropurpureus**. This is a marked improvement on the well known Purple Fringe which I have always considered one of the handsomest shrubs in cultivation. This shrub makes a splendid specimen. The introducer describes the plumes as scarlet, which is hardly true, but they are much deeper in color than those of the old variety. Each, 50 cents.
- Rubus Sorbifolius**. A Japanese Raspberry, hardy, producing large, handsome, luscious fruit, resembling in size and form the strawberry; red in color, and of sprightly sub-acid pleasant flavor. Large white flowers, fragrant. Each, 25 cents.
- Rubus Xanthocarpus**, raspberry, introduced from China, forms a dwarf erect bush, 1 foot high; ornamental foliage; fruit yellow, acidulous flavor. Each, 25 cents.
- **Sambucus Rac-mosa Tenatifolia**. Beautiful hardy variety, with fine deeply cut green foliage. The plant in its aspect much resembles some varieties of the Japanese Maple, and may replace them in countries where these nice shrubs do not thrive well. Each, 75 cents.
- **Sambucus** (Elder), *Nigra flore rosea plena*, very vigorous shrub, with double-rose flowers; awarded a silver medal at the Antwerp Exhibition. Each, 25 cents.
- **Viburnum Dillatatum**, not new, but very scarce; one of the best of the *Viburnums*; grows 8 to 9 feet high; small white flowers in June. The fruit is beautiful orange-red and ripens in September. Each \$1.00.
- **Weigela Eva Rathke**, a new, ever-blooming *Weigela* of great beauty; vigorous, and flowers all summer; large flowers, crimson red. A great acquisition that will become immensely popular. Each, 40 cents; per doz., \$4.00. Stronger plants 75 cents each.
- Weigela Conquete**. Flowers enormous. The largest flowered variety, deep rose, measuring 1½ to 2 inches across. 75 cents each.
- Weigela Præcox**, Japanese sort, vigorous, branches erect, flowers carmine-rose, throat marked with yellow stripes; blooms 3 to 4 weeks before the other sorts. 75 cents each.
- Weigela Mont Blanc**, extremely vigorous, flowers very large, pure white, much superior to other white flowering varieties. Each, 25 cents.

A Few Shrubs of Exceptional Merit.

All of the shrubs offered in the general list that follows are desirable, and have their special uses, some of them are as fine as any described below, but are too well known to need special description, but no grounds are so small that should not include all of the following.

Hypericum Moserianum. This, on account of its peculiar appearance and dwarf habit, might be considered a herbaceous plant instead of a shrub. Planted in groups, beds or masses it is extremely effective, and is in bloom throughout the summer and fall. The flowers are 2 inches in diameter, of a rich golden-yellow color, and very desirable for cutting. The plant does not grow over 15 or 18 inches high, and should be planted about 15 inches apart. Each, 20 cents; per dozen, \$2.00; per 100, \$12.00.

Berberis Thunbergii. The nurserymen all unite in praising this splendid shrub, and it deserves all the praise it gets, but the price has been kept pretty high. I have a large stock grown and offer it at about half current prices, so that my customers can afford to plant it freely. It has every good quality, beautiful habit, fine foliage, free flowering qualities, but its greatest charm is the great quantities of crimson berries which it produces in the summer, and which remain on the bushes all winter, making it very effective in the winter landscape. It is also fine for cutting for house decoration, almost equal to the holly, which cannot be grown very well north of Washington or east of Philadelphia. This *Berberis* makes a splendid untrimmed hedge, and my low prices make it available for that purpose. Each, 20 cents; per dozen, \$2.00; per 100, \$17.00; small plants, \$5.00 per 100.

Mahonia Aquifolium. A splendid evergreen shrub which shows a variety of coloring in its foliage at all seasons of the year and produces a great display of bright yellow flowers early in the spring. At times the foliage is as brilliant and as rich in color as autumn leaves. It is not often used for the purpose, but it makes a splendid hedge. A good example of this can be seen on Judge Mellon's grounds in this city. This shrub should be planted in the spring. Each, 20 cents; per dozen, \$2.00; per 100, \$12.00.

Speaking of shrubs, Miss Jekyll in her book *Wood and Garden*, says "What a precious thing this fine old *Mahonia* is, what should we do in winter without its vigorous masses of grand foliage in garden and shrubbery, to say nothing of its use indoors?" * * * * * When one reflects that *Mahonia Aquifolium* is individually one of the handsomest of small shrubs, that it is at its very best in mid-winter, that every leaf is a marvel of beautiful drawing and construction and that its ruddy winter coloring is a joy to see; and further when one remembers that in spring the whole picture changes—that the polished leaves are green again and the bushes are full of tufted masses of

brilliant yellow bloom and fuller of bee-music than any other plant then in flower. * * * * * It is the only hardy shrub I can think of that is in one or other of its varied forms of beauty throughout the year."

Cephalanthus Occidentalis. This splendid native shrub is almost unknown and has never been pushed by the nurserymen, although scores of inferior things have been praised to the sky, and sold by the thousands. It is really unique, there being no other shrub at all like it. The foliage is luxuriant, bold and finely colored, and the white flowers which are produced freely in July, when almost no other shrub is in bloom, are remarkable, being perfectly round in shape, and about 2 inches in diameter. They are sweetly scented. This is an excellent shrub for general planting that I cannot commend too highly, and like most native shrubs is of the easiest culture. 20 cents each; \$2.00 per dozen; \$12.00 per 100.

Rubus Odorata. This is the flowering raspberry which grows wild by the tens of thousands in many parts of this country. I want to call especial attention to it, for nothing can be better for covering steep and partially shaded banks. It does best on moist north hillsides. It makes masses of most pleasing and effective foliage and its large purplish red flowers are produced all summer. Each, 20 cents; per dozen, \$1.25; per 100, \$8.00.

Since the above was written I have tested the shrub in my experimental grounds, and have found it one of the most beautiful shrubs in my collection and one of the easiest culture. If it never bloomed, its foliage would make it entirely satisfactory. It was planted in full exposure to the sun in ordinary garden soil.

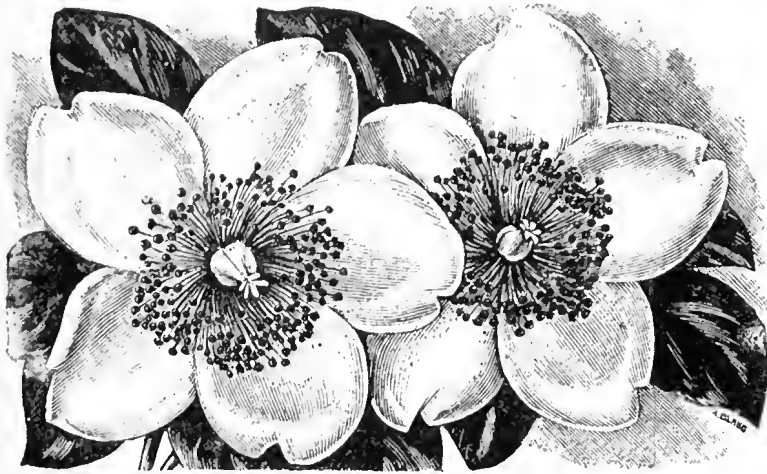
Rhus Cotinus. This is a common old shrub that almost everybody knows under the name of "Purple Fringe" or "Smoke Tree," but it is almost never seen in perfection on account of being ruined by pruning. In good soil, and allowed to develop naturally, it in time makes one of the finest things imaginable, which is well shown by the illustration taken from *Country Life*. Each, 25 cents, per dozen, \$2.50.

Spiræa Lindleyana. A noble shrub of most striking and picturesque habit that is distinct from all other *Spiræas*. It is rarely seen, but should be in every collection. In a favorable soil and situation it will grow 6 to 8 feet high. The graceful foliage is

A FEW SHRUBS OF EXCEPTIONAL MERIT.—Continued.

finely divided and delicate green, the flower clusters large, white and plume-like, being at their best about the middle of August. Like many other plants it has in some soils peculiar ways, and in others, especially of a warm nature, it blooms well enough to deserve the epithet superb. In cool soils I have noticed it does not always attain the grand flowering state which is shown by the great long plumes of flowers it bears in warm soils. Where the soil is too cool it seems to spread more at the root, but in all cases it is beautiful for its foliage and habit. Each, 25 cents; per dozen, \$2.50; per hundred, \$15.00.

Aralia Japonica. For form and foliage there is nothing quite equal to this splendid Japanese Aralia. It is as picturesque as a fine palm, and being perfectly hardy, effects can be produced with it in the garden not to be obtained in other ways. It produces large spikes of white flowers in September, followed by great bunches of black berries. It is altogether one of the finest things I know of, but to have it in perfection it should be planted in deep rich soil and every two or three years cut back to the ground. Each, 50 cents; per dozen, \$5.00.



HYPERICUM MOSERIANUM.

Exochorda Grandiflora (Pearl Bush). This is one of the finest shrubs of its season (May) and when in bloom is covered with its lovely white flowers. This shrub has always been scarce and high priced, but I have secured a large stock which I can offer at a low price. When planted, fully two-thirds of its top should be cut off. Each, 20 cents; per dozen, \$2.00; per hundred, \$14.00.

Genista Scoparia (Scotch Broom). To the casual observer, this shrub appears to have no leaves, as, being so few and small, they are not particularly noticeable. The stems and branches are of a bright green color, standing in strong contrast to other plants. The flowers are yellow, pea shaped, and completely cover the plant, opening during the last days of May. North of Pittsburg, it requires some protection, and even here it is sometimes partially winter-killed, though never enough to prevent its blooming the succeeding summer. Each, 20 cents; per dozen, \$1.50; per hundred, \$8.00.

Gardening Books and Papers.

I am sorry to say it, but there is at present no gardening paper published in America worthy of consideration. For a few years we had an excellent paper, well suited to the needs of our country. Its editor was able and enthusiastic, and had the business management been as intelligent as the editorial the success of the paper would have been unqualified, but the editor was allowed to resign and the paper dropped into the uninteresting rut occupied by its contemporaries. This is preliminary to recommending the English paper, *The Garden*, which is beyond question the best gardening paper published in the world. It is a weekly, well edited, well printed and freely illustrated with pictures made in the best gardens in England. It is really a cheap paper at \$4.50 per year. I will be glad to forward subscriptions to the London office for my customers.

Another English paper that gives me a great deal of pleasure is *Country Life*. It is a 32-page weekly exclusive of advertisements, and is the best printed and illustrated paper I have ever seen. It treats of all pursuits and sports of country life, but is especially interesting on account of its illustrated descriptions of English country places, one of which it publishes each week, showing house, gardens and lawns. My attention was called to this paper recently by one of my clients, and I was so well pleased with it that I bought all the back numbers as well as subscribing. The price for American subscription is \$10.00 per year. I will forward subscriptions if desired.

The best book on gardening ever published and worth more than all other books on gardening and landscape gardening is Wm. Robinson's *The English Flower Garden*, now in its eighth edition. Whatever success I have made as a landscape gardener I owe to the inspiration of this book. It not only teaches good gardening, but what is quite as important, condemns bad, giving reasons that are convincing for both. This book has done more to improve the gardening in England than all other influences combined, and I wish it were in my power to secure its reading by all thoughtful intelligent people in this country. The book is very comprehensive, treating of the arrangement of various styles of gardens, and contains descriptions of almost every tree, shrub, plant and bulb of value used in ornamental gardening. It is profusely illustrated by the best English artists with pictures made in hundreds of English gardens. The price is \$6.00. It may be ordered from any bookseller, or I will forward it on receipt of the price.

A delightful book recently published in England is *Wood and Garden*, by Miss Jekyl. The book hasn't much to say about culture, but is full of good suggestions for arrangement, and the illustrations from photographs made by the author are a delight, and should do much toward the banishment of ugly and inartistic gardens. It is charmingly written by an enthusiastic amateur, and should be read and owned by every lover of a good garden as well as by those who know nothing of the pleasures of a garden. The book can be obtained through any bookseller.

Grass Seed for Lawns.

I can supply the very best quality of Mixed Lawn Grass Seed for \$2.50 per bushel. This is exactly the same quality of seed as that usually sold for \$5.00 per bushel as Central Park mixture, or under some other fancy name. Grass seed weighs only 14 pounds per bushel, and can be shipped inexpensively by express (shipped from Cincinnati). I do not supply less than one bushel. Special prices quoted for large quantities. Grass seed sold by weight, 14 pounds for a bushel, but 14 pounds of clean grass seed will not fill a bushel.

ORNAMENTAL FLOWERING SHRUBS.—Continued.

	Each.	Per doz.	Per 100.		Each.	Per doz.	Per 100.
<i>Calycanthus Floridus</i> , "sweet scented shrub,"	\$ 20	\$1 75	\$13 00	<i>Halesia Tetraplera</i> , "Silver Bell".....	\$ 20	\$2 00
<i>Calliandra Purpurea</i> , a pretty little shrub with small pink flowers and a great profusion of violet-colored berries in autumn.....	20	2 00	13 00	The above is one of the most beautiful flowering shrubs in cultivation.			
<i>Caragana Arborescens</i>	49	4 00	<i>Hamamelis Virginica</i> , "Wych Hazel," blooms in late fall and early winter.....	30	3 00
<i>Cassia Marilandica</i> , 12 to 18 inches.....	12	1 25	6 00	<i>Hippophae Rhamnoides</i> , "Sea Buckthorn,".....	15	1 00
<i>Carpinus Americana</i> , American Hornbeam, 2 to 3 feet.....	15	1 50	10 00	<i>Hydrangea Arborescens</i>	15	1 50
<i>Ceanothus Americanus</i>	20	1 50	" <i>Paniculata Grandiflora</i> , the well known hardy Hydrangea.....	20	2 00
<i>Cephalanthus Occidentalis</i>	20	2 00	12 00	" <i>Radiata</i> , handsome native variety, fine for naturalizing.....	20	1 75
<i>Cercis Japonica</i> , (Japanese Red Bud). This is one of the most beautiful, large growing shrubs in cultivation. It should be generally planted.....	25	2 50	" <i>Paniculata</i> , distinct from <i>P. grandiflora</i> , a very striking and elegant shrub.....	20	2 00
<i>Clethra Alnifolia</i> , A splendid summer blooming shrub, with delicious odor.....	20	1 75	10 00	" <i>Quercifolia</i> , Oak-leaved Hydrangea, very handsome.....	50	5 00
<i>Colutea Arborescens</i> , 2 to 3 feet.....	20	1 75	10 00	<i>Hypericum Densiflorum</i>	20	2 00
<i>Caryopteris Mastacanthus</i> , "Blue Spirea".....	20	2 00	" <i>Moserianum</i> , extremely beautiful and desirable, large golden yellow flowers.....	20	2 00	\$12 00
<i>Chionanthus Virginica</i> , "White Fringe".....	50	5 00	" <i>patulum</i>	25	2 00	12 00
<i>Cornus Alba</i> , <i>Sanguinea</i> , <i>Mascna</i> , <i>Scricea</i> , <i>Stolonifera</i> and <i>Siberica</i> , 2 to 3 feet.....	20	1 75	12 00	" <i>prolificum</i>	20	2 00	13 00
" <i>Spathii</i> , beautiful golden leaves, 12 to 18 inches.....	50	5 00	" <i>calycium</i>	20	2 00
" <i>Elegantissima Variegata</i> , same as above but with white variegation.....	40	4 00	" <i>ascyron</i>	25	2 50
<i>Corylus Purpureus</i> , Purple Hazel, rich purple foliage, 2 to 3 feet.....	40	4 00	<i>Ilex Virginica</i>	20	1 75
" <i>Laciniata</i> , finely cut fern-like foliage.....	25	2 50	<i>Ilex Verticillata</i> , (Deciduous Holly) valuable for its brilliant scarlet berries in fall and winter.....	25	2 50
" <i>Americana</i> , American Hazelnut.....	25	2 50	<i>Lespedeza Bicolor</i> , 18 to 24 inches.....	30	3 25
" <i>Avellana</i> , English Hazelnut.....	25	2 50	<i>Lilac</i> , common purple, 1 to 2½ ft.....	15	1 50	8 00
" <i>Cosford</i> , large fruited Hazelnut.....	25	2 50	" " " 2½ to 3 ft.....	20	2 00	12 00
<i>Cralægus Coccinea</i> , American Hawthorn, 15 to 18 inches.....	25	2 50	" " " white, 1½ to 2 ft.....	15	1 50	10 00
" <i>Crus-galli</i> , Cockspear Hawthorn, 3 ft.....	25	2 50	" " " 2½ to 3 ft.....	20	2 00	13 00
" <i>Oxycaatha</i> , English Hawthorn, 24 to 36 inches.....	20	1 50	10 00	" Persian, white and purple, small flowers, 3 to 4 feet.....	25	2 50	16 00
" " double flowered rose Hawthorn, 2 feet.....	40	4 00	" new varieties, strong two years budded plants, (described below). Price, except otherwise noted, 25 cents each; \$2.50 per dozen; \$17.00 per 100. For prices of named Lilacs grown on their own roots see page 8.			
" " double flowered white Hawthorn.....	25	2 50	" <i>Bertha Dammann</i> , immense trusses of pure white flowers, very profuse bloomer, 2 to 3 feet, 35 cents each.			
" " double flowered scarlet.....	25	2 50	" <i>Flore Pleno</i> , one of the oldest of the Double Lilacs, and an excellent kind. Simply a Double <i>Vulgaris</i> . Large and fine; 2 to 3 feet.			
" <i>Pyracantha Lalanii</i> , (Evergreen Thorn) one of the most beautiful thorns. Covered with splendid scarlet fruit in fall and winter.....	25	2 50	15 00	" <i>Marte Legray</i> . The best White Lilac in cultivation.			
<i>Corchorus Japonica</i> , variegata, a dwarf shrub with beautiful, graceful foliage. A dainty, charming shrub that should be freely planted.....	20	1 50	10 00	" <i>Madam Lemoine</i> , large spike of pure white double flowers, decidedly one of the finest varieties of recent introduction; 2 to 3 feet; 35 cents each.			
" (Kerria Japonica), single yellow, blooms freely in summer time.....	20	2 00	" <i>Souvenir de la Spah</i> , the most distinct and beautiful variety in the collection, trusses immense; very compact; florets very large, deep purplish red. Growth vigorous. 35 cents each; \$3.50 per dozen, 2 to 3 feet.			
" (Japonica Florepleno) a superb summer blooming shrub with showy double yellow flowers.....	20	2 00				
<i>Cydonia Japonica</i> , brilliant red, (Japan Quince), 18 to 30 inches.....	20	1 50	10 00				
" <i>Mauled</i> , orange colored flowers, very distinct shade.....	25	2 50				
" <i>Japonica Candida</i> , White Flowered.....	20	2 00				
<i>Cotoneaster Wheeleri</i> , very neat shrub with scarlet berries.....	20	1 75				
" <i>Simmondsi</i>	20	1 75				
" <i>Microphylla</i> , evergreen variety.....	20	1 75				
<i>Cytisus Laburnum</i> , Laburnum, or "Golden Chain".....	30	2 50				
<i>Daphne Mezereum</i> , white, 2 feet.....	30	3 00				
<i>Deutzia Welshi</i>	25	2 50				
" <i>Scabra</i>	20	1 75				
" <i>Candidissima</i> , <i>Crenata</i> , <i>Fl. Pl.</i> and <i>Pride of Rochester</i>	20	2 00	12 00				
" <i>Gracilis</i> , transplanted, nice clumps.....	15	1 50	10 00				
<i>Desmodium Penduliflorum</i> , an exceedingly graceful shrub-like plant, covered with flowers in summer time when little else is in bloom, strikingly beautiful.....	25	2 75				
" <i>Japonicum</i> , white.....	25	2 50				
<i>Dimorphanthus Manchuricus</i> , a very ornamental shrub, with long multifid leaves, imparting a decidedly sub-tropical aspect to a group, 2 to 3 feet.....	40	3 00				
<i>Dirca Palustris</i> , "Catherwood" 12 to 15 inches.....	30	3 00				
<i>Diercilla Sessilifolia</i>	25	2 50				
<i>Euonymus Atropurpureus</i> , American "Burning Bush".....	25	2 50				
" <i>Europæus</i> , European "Burning Bush".....	25	2 25				
<i>Elæagnus Longipes</i> , a new and handsome shrub with edible fruit. True variety.....	40	4 25				
" <i>Parvifolius</i> , "Silver Thorn".....	30	3 00				
" <i>Umbellatus</i>	20	1 50				
" <i>Angustifolius</i> , "Silver Thorn".....	20	1 50				
<i>Exochorda Grandiflora</i> , a rare Chinese shrub with pure white flowers.....	20	2 00	14 00				
" <i>Alberti</i>	20	3 00				
<i>Forsythia Fortunei</i> and <i>Viridissima</i> , 2 to 3 ft.....	20	1 75	12 00				
" <i>Suspensa</i> , 30 to 36 inches.....	20	1 50	10 00				
<i>Fontanesia Filariifolia</i>	20	1 75				
<i>Genista Scoparia</i> , "Scotch Broom," 12 to 18 inches.....	20	1 50	8 00				
<i>Halesia Diptera</i>	30	3 00				

(Ornamental Flowering Shrubs continued on next page.)

ORNAMENTAL FLOWERING SHRUBS.—Continued.

	Each.	Per doz.	Per 100
Privet, Variegated-leaved, an elegant new form, standing the sun well and always very distinct, 3 to 4 feet.....	\$ 25	\$2 50
" Ibota, 2½ to 3 feet.....	20	2 00
" Chinese, a rare variety with beautiful foliage.....	25	2 50	\$15 00
" common, desirable for hedging and hardier than California Privet.....	10	1 00	6 00
" (Ligustrum Media,) a new variety of beautiful habit; fruits immensely.....	25	2 50
Potentilla Fruticosa, 2 to 3 feet.....	25	2 50	13 00
Pyrus, Arbutifolia (Choke Berry) a native shrub of great beauty and easy culture. Covered with white flowers early in spring, followed by bright red berries which last all winter.....	20	2 00
Prunus Sienensis Rubra, a dwarf Chinese plum of great beauty. Double red flowers.....	23	2 50
Prunus Triloba, a desirable flowering plum, very beautiful.....	25	2 50
Prunus Pissardi, purple-leaved plum, desirable on account of its rich purple foliage.....	20	2 00
Prunus Maritima, (Beach Plum) dwarf bush plum which makes an extremely ornamental shrub on account of its flowers as well as its fruit, which is produced on bushes when only two feet high. The fruit is edible and makes an excellent preserve.....	25	2 50
Rhus Copallina, shining leaved sumac.....	35	3 10
" Cotinus, purple fringe.....	25	2 50
" Glabra, Laciniata, cut leaved sumac.....	25	2 50
" Typhina, (common sumac).....	20	1 50	10 00
" Osbecki.....	30	3 00
" Aromatica.....	40
Ribes Aureum, (Missouri currant).....	20	2 00	13 00
" Gordonianum.....	20	2 00
Rhodotypos Kerrioides.....	20	2 00
Robinia Hispida, Rose flowered Acacia, extremely free flowering and attractive.....	20	2 00
Rubus Odoratus. See special description page 31.....	20	1 25	8 00
" Fruticosus.....	40
Sambucus Canadensis, common Elderberry; very striking when planted in rich soil.....	20	1 50
" Canadensis Aurea, golden-leaved Elderberry.....	20	2 00	13 00
" Laciniata, cut leaved.....	20	2 00
" Pubens, this rare variety has bright red fruit in the spring when the common Elderberry is in bloom.....	25	2 50
Spiræa, Reevesi, Reevesi Fl. Pl. Billardi and Salicifolia.....	20	1 75	12 00
" Opulifolia Aurea, 2 to 3 feet.....	20	2 00
" Tomentosa, a showy native species, with pink panicles of flowers, 2 to 3 feet.....	20	1 75	10 00
" Aricifolia.....	20	2 00
" Thunbergii.....	20	2 00	13 00
" Bumalda, a beautiful dwarf variety, in flower all summer.....	25	2 50	13 00
" Prunifolia.....	20	1 75
" Van Houttei, a dwarf and very graceful variety. One of the best, by many people considered the most satisfactory shrub in cultivation.....	20	1 75	12 00
" Lindleyana, A splendid variety, both on account of its foliage and flowers. Very picturesque and striking.....	25	2 50	15 00
" Anthony Waterer. A beautiful novelty introduced lately into our collections. The "Garden and Forest" thus alludes to it in a recent issue: "This is a seedling of that variety of Spiræa Japonica which is known in gardens as Sp. Bumalda, and which is distinguished by its dwarf, compact habit, its persistent flowering, and bright red flowers. Spiræa Anthony Waterer originated in the Knaphill Nurseries at Woking, in England a few years ago, and differs from its parent in the deeper, brighter, and more intense color of the flowers. As it begins to flower freely when only a few inches high, and continues to produce its large flat corymbs from July until frost appears, this shrub promises to be a capital addition to the rather short list of autumn-flowering hardy shrubs." It has received a first-class certificate from the "Royal Horticultural Society." Two year old plants, 25 cents each; \$2.25 per dozen; \$17.00 per 100.			
Spiræa, Douglasi Rosca, bright red spikes of flowers.....	\$ 20	\$1 50	\$10 00
" Sorbifolia.....	25	2 50
" Hookeri, trusses of white flowers.....	20	1 50

	Each.	Per doz.	Per 100
Spiræa, Fortunii Rosca.....	\$ 20	1 75	12 00
" Trilobata.....	20	1 75
" Paniculata Rosca.....	20	1 50	10 00
" Carpinifolia.....	20	1 50
Snowberry, White fruited, 2 to 3 feet.....	20	1 50	10 00
" Red fruited, 2 to 3 feet.....	20	1 50	10 00
" Variegated, beautiful variegated foliage. All the snowberries are very desirable in the shade or under trees where nothing else will grow. They are covered with white or red berries in fall or winter.....	20	1 75	12 00
Staphylea, Colchia, extremely sweet scented and free flowering shrub; very desirable.....	30	3 00
Styrax Japonica, This rare gem is one of the most desirable shrubs known. When in bloom it is literally covered with cream white bells, 4 to 5 feet.....	30	3 00	20 00
Stephanandra Flexuosa, a very graceful shrub with deeply cut fern-like foliage.....	20	2 00
Tamarix, Gallica (Chiuensis) 2 to 3 feet.....	20	2 00
" Tetrauda (Africana), 2 to 3 feet, very attractive species.....	20	2 00
" Indica.....	20	2 00
" Japonica.....	20	1 50
Viburnum, Lautana.....	25	2 50
" Opulus Sterilis (Snowball).....	20	2 00	13 00
" Opulus Nana, very dwarf.....	15	1 50
" Oxycoceus (Cranberry tree).....	30	3 00	20 00
" Plicatum (Japan Snowball) one of the choicest shrubs, 18 to 24 inches.....	30	3 00	20 00
" Dilatatum.....	1 00
" Tomentosum, rare and choice.....	40
" Acerifolium.....	30	3 00
" Dentatum, a most beautiful and satisfactory shrub.....	35	3 50
" Sieboldianum (Reticulatum).....	50	5 00
Vitex Agnes, Castus "chaste shrub," blue.....	20	1 50
" " " " white.....	20	1 50
Weigela, Candida.....	20	2 00
We are now prepared to supply this charming white Weigela in large lots. Decidedly the most desirable of its color.			
Weigela, Rosea, (a heavy stock of fine plants).....	20	2 00
" Rosea Nana Var. (variegated leaved) 1 to 3 feet.....	20	1 50
" Othello, dark rose.....	25	2 50
" Florabunda, crimson.....	25	2 50
" Abel Carriere, dark rose flowers, fine foliage.....	20	2 00
Zanthoceras, Sorbifolia, new and beautiful, 8 to 10 inches.....	35	3 50
Zanthorhiza, Apifolia, 8 to 12 inches.....	25	2 50

EVERGREEN SHRUBS.

	Each.	Per doz.	Per 100
Aucuba, Japonica.....	\$ 25	\$2 50
Berberis Neuberti, Holly shaped leaves, very handsome.....	20	2 00
" Dulcis, dwarf and neat.....	20	2 00
Box (Chinese), Latifolia.....	60	6 00
" Longifolia, 1½ to 2½ feet.....	60	6 00
" " " 2 to 2½ feet.....	85	8 50
" " " Rotundifolia.....	30	3 00
" " " 18 to 24 inches.....	60	6 00
" Common Tree, 18 to 24 inches.....	70	7 00
Daphne Cneorum Major, a little trailing evergreen with lovely pink flowers. As dainty as the Trailing Arbutus.....	50	5 00
Euonymus, Japonica.....	20	2 00
Mahonia, Aquifolium.....	20	2 00	\$12 00
" Japonica.....	30	3 00	16 00
Ilex Opaca, American Holly.....	35	3 50	25 00
" Crenata, a dwarf holly of beautiful habit and foliage, perfectly hardy and covered with black berries in the winter.....	85	9 00
Leucothæa Cætesbaei, Extremely graceful and beautiful evergreen shrub with white bell shaped flowers.....	25	2 50
Kalmia Latifolia, known as the small leaved Mountain Laurel. One of the most beautiful flowering shrubs in cultivation. Nice, small nursery-grown plants, 12 to 14 inches.....	50	5 00
Rhododendron Maximum, our well-known Mountain Rhododendron, blooming in July, nice nursery-grown plants.....	50	5 00
" Catawbiense, the wild Rhododendron of the southern mountains, very desirable, fine nursery-grown plants.....	50	5 00

Ornamental Deciduous Trees.

The following list of trees is selected from the best nurseries in the United States. Orders will be shipped from the nearest nursery that can supply stock ordered, so as to save freight charges and secure quickest possible delivery; where stock is ordered in considerable variety, it is sometimes shipped from two or more nurseries to secure trees of the best qualities. I always endeavor to secure the best stock in the market for my customers. The prices quoted are for trees of the most suitable size for transplanting; extra large trees of many varieties can be supplied, but are not recommended. If quick results are desired they can be had by taking extra care in planting small and medium sized, but perfectly vigorous and healthy trees; for instance, dig hole four feet deep and four feet in diameter for each tree, and fill with all good surface soil, mixed with one-fourth its bulk of rotted stable manure.

It costs considerable to plant trees in this manner, but the results justify the expense, and people often pay from ten to fifty dollars each for large trees, which always fail, generally dying outright within three years, and never making vigorous, healthy trees. Some kinds of trees may be safely planted much larger than others, magnolias, beeches, tulip trees and white-leaved linden are difficult to transplant, and small sized trees of these should always be selected. Some varieties should always be planted in the fall, others always in the spring, and I will be glad to advise my customers on these and other points in regard to planting.

Net lowest prices will be quoted for trees by the 100 and 1000 on application.
Specially desirable trees are marked with asterisk (*).

	Each.	Per doz.
Allanhus Glandulosa, female trees, which are almost free from disagreeable odor.....	\$ 75	\$ 7 00
Alder, Cut-leaved.....	75	8 00
" European.....	75	8 00
*Andromeda Arborea, sorrel tree, a scarce and extremely beautiful flowering tree, 2½ to 3 feet.....	50	5 20
Ash, American White.....	65	6 50
" English.....	60	6 00
Beech, American.....	80	8 00
" English.....	70	7 00
" Fern leaved.....	90	9 00
" Cut-leaved.....	1 00	10 00
" Purple-leaved.....	75	8 00
" Weeping.....	1 75	12 00
The beeches are the noblest of trees, but are of slow growth and difficult to transplant. Small trees should always be selected and well pruned when planted.		
*Birch, European White.....	50	5 00
" Cut leaved Weeping.....	60	6 00
" Purple.....	1 00	10 00
" Paper.....	75	7 50
" Red.....	1 00	10 00
" Sweet, 3 to 4 feet.....	40	4 00
Balm of Gilead. (See Poplars.)		
Buttonwood. (See Sycamore.)		
Catalpa (Indian Bean or Cigar Tree) Bungii, Standard.....	1 25	12 00
" Bungii, grafted at the ground.....	50	5 00
" Japanese.....	50	5 00
" Speciosa, our native variety.....	50	5 00
Cherry, European Bird.....	40	4 00
" American Wild.....	60	6 00
" Double-flowered, White.....	80	8 00
" " Pink.....	75	8 00
" Rose-flowered, Weeping Japanese, Unique and beautiful flowering tree that should be in every collection.....	2 00
*Crab Apple, Parkman's (Pyrus Parkmanni).....	75	7 50
" Bechtel's new double-flowered.....	75	8 00
" Japanese (Pyrus Toriugo), extremely beautiful.....	60	6 00
" Common Wild (Pyrus Coronaria).....	30	3 00
" Double White (Spectabilis).....	60	6 00
" Malus Flexilis, a splendid sort with red fruit.....	75	7 50
" Florabunda, single-flowered, pink, one of the most beautiful.....	75	7 50
" Kaido, flowers single, white and pink, followed by small fruit in clusters, very ornamental.....	25	3 00
The ornamental crab apples are undoubtedly the most beautiful small flowering trees in cultivation; even more beautiful than the popular magnolias. They are of the easiest culture, hardy and bloom when quite small.		
Cypress, Deciduous.....	50	5 00
Cladrastis Tinctoria (Virgilia lutea).....	90	9 00
Cercidiphyllum. (Japonicum).....	85	8 00
Cercis Canadensis (American Judas Tree).....	20	2 00
" Japonica (Japanese Judas Tree).....	30	3 00
*Dogwood, White flowering.....	50	5 00
" Red flowering.....	75	8 00
" Weeping.....	75	8 00
*Elm, American.....	1 00	10 00
" European.....	80	8 00
" Canperdown, Weeping.....	75
*Honey Locust, American.....	60	6 00
*Horse Chestnut, American or Buckeye.....	75	7 50
" White flowering.....	1 00	10 00
" Double white.....	1 00	10 00
" red.....	1 00	10 00
Kentucky Coffee Tree (Gymnocladus Canadensis).....	90	9 00
Kolreuteria Paniculata.....	75	8 00
Larch, European.....	40	4 50
Linden, American.....	80	8 00
" White or silver-leaved, a superb tree.....	1 50	15 00

	Each.	Per doz.
Linden, European.....	\$ 75	\$ 8 00
" Golden-barked.....	80	8 00
" Large-leaved (Tilia Plataphylla).....	75	7 50
" White-leaved, weeping, a splendid pendulous tree.....	1 50	15 00
Liquidambar Syraciflua (sweet gum), 4 to 5 feet.....	75	7 50
Magnolia, Acuminata, "Cucumber Tree".....	50	5 00
" Glauca, "Sweet Bay".....	50	5 00
" Macrophylla, Giant-flowered Magnolia, flowers 12 to 15 inches across.....	75	7 50
" Tripetala, "Umbrella Tree".....	40	4 00

CHINESE AND JAPANESE MAGNOLIAS.

	Each.	Per doz.
Magnolia, Conspicua, a superb large flowered white Magnolia, 2 to 3 feet in pots.....	1 50	15 00
" Purpurea (Obovata), purple small.....	30	3 00
" Soulangeana, white, pink center, a splendid sort that is literally covered with large flowers early in the spring, 50 cents, 75 cents, \$1.00, \$1.50 and \$2.00 each, according to size.....
" Stellata (Halleana) a dwarf white variety of exquisite beauty, 12 to 18 inches, in pots.....	1 25	12 00
" Stellata, 18 to 24 inches, in pots.....	1 50
" Hypoleuca, a choice Japanese variety.....	2 50
" Parviflora (Watsoni) a very scarce and extremely lovely Japanese variety.....	2 50
" Lunnei, a beautiful sort with large purple flowers.....	1 75
" Kobus, a Japanese white variety.....	50	5 00
" Gracilis, purple flowers.....	25	2 50
Maple, Ash-leaved (Box Elder).....	75	7 50
" Colchicum rubrum.....	75	8 00
" European Cork.....	75	7 50
" English.....	70	7 00
" Norway.....	1 00	10 00
" Purple Norway.....	1 25	13 00
" Schwedler's Purple.....	1 25	13 00
" Silver-leaved, water or soft.....	50	5 50
" Striped bark, (Pennsylvanicum).....	65	6 50
" Sugar or Rock.....	75	8 00
" Sycamore.....	90	9 00
" Wier's cut-leaved.....	60	6 00
" Red or Scarlet.....	1 00	10 00
" " small trees.....	60	6 00
" Mountain (spicatum), small.....	35	3 50
" Tartarian, small.....	50	5 00
Mountain Ash, European.....	30	3 00
" Cut-leaved.....	40	4 00
" Weeping.....	60	6 00
Mulberry, New American.....	60	6 00
" Downing's.....	50	5 00
" Russian.....	40	4 00
" white.....	40	4 00
" Teas, weeping.....	80	8 00
Nyssa Multiflora (Sour Gum).....	50	5 00

NUTS.

	Each.	Per doz.
Almonds, hard or soft shell.....	\$ 30	\$ 3 00
Chestnut, American.....	70	7 00
" Japan.....	1 00	10 00
" Spanish.....	50	5 00
" Paragon.....	1 00	10 00
" Nunbo.....	1 00	10 00
Hickory, "Shellbark".....	50	5 00
" black.....	40	4 00
" English.....	75	7 50
" Japanese.....	60	6 00
*Oak, White, 3 to 4 feet.....	1 25
" Turkey, 5 feet.....	1 25
" Scarlet, a grand tree, with splendid coloring in fall, 6 to 7 feet.....	1 50
" Laurel-leaved, 3 to 4 feet.....	1 25	13 00

(Ornamental Deciduous Trees continued on next page.)

ORNAMENTAL DECIDUOUS TREES.—Continued.

	Each.	Per doz.		Each.	Per doz.
Oak , Pin (<i>Quercus Palustris</i>), one of the very finest trees for avenue or lawn planting, and of very rapid growth. The great demand for this tree has made it very scarce, 5 to 6 feet.....	\$ 1 25	\$13 00	Photinia Villosa , a very ornamental tree, covered with red berries in fall and winter.....	\$ 60	\$ 5 50
" Pin, 6 to 7 feet.....	1 50	16 00	Poplar , Carolina.....	35	3 50
" " 7 to 8 feet.....	1 75	18 00	" Lombardy.....	40	4 00
" " 9 to 10 feet.....	2 00	20 00	" Pyramidal (Bolleana).....	75	8 00
" " 10 to 11 feet.....	2 50	25 00	" Golden.....	35	3 50
" " 10 to 11 feet low-branched specimens.....	5 00	" Silver.....	40	4 00
" Golden.....	1 50	16 00	" Balsam, "Balm of Gilead".....	75
" English.....	1 60	Plum , purple-leaved (<i>Prunus Pissardi</i>).....	25	2 50
" Red, 6 to 7 feet.....	1 60	Salisburya Adiantifolia , "Ginko," or "Maiden-hair Tree".....	75	8 00
The planting of Oaks for ornament has been done but little on account of their supposed slow growth. They grow quite as rapidly as other hard wood trees, and the Pin Oak is of very rapid growth, and one of the very finest trees in cultivation.			Sassafras , a small native tree, seldom used but extremely desirable for its foliage.....	50	5 50
Ostrya , Virginia, "Iron Wood".....	50	4 00	Sophora Japonica	35	3 50
Osage Orange , 5 to 6 feet.....	50	5 00	Thorns . See Hawthorns, under head of Hardy Shrubs.		
Paulownia Imperialis , "Empress Tree".....	50	5 00	Tulip Tree (<i>Liriodendron Tulipifera</i>).....	50	5 00
Peach , Blood-leaved.....	25	2 50	Sycamore Oriental . The Oriental Sycamore is extensively used in Europe for street planting.....	1 00	11 00
" Double-flowering, pink, white and crimson.....	30	3 00	Willow , American Weeping.....	40	4 00
" " Persica Magnifica , a new variety received from Europe. It is one of the most beautiful small flowering trees in cultivation.....	75	" Killmarnock.....	30	4 00
Persimmon , American.....	50	5 00	" White.....	10	1 00
Plane . (See Sycamore.)			" Laure-leaved, very handsome.....	30	3 00
			" Rosemary.....	50	5 00
			" Golden-barked.....	25	2 50
			" Flame-colored.....	20	2 00
			Yellow Wood . See <i>Cladrastis</i> .		

EVERGREENS.

The prices quoted are for trees frequently transplanted and of fine shape, suitable for ornamental planting. When it is desired to make extensive plantations, extremely low prices can be made by the 100 and 1,000. Evergreens should be planted in the spring. Many seasons they can be planted safely in September, but the risk of shipping at this time is great on account of hot weather.

Rare evergreens, not obtainable in this country, will be imported to order.

SCIADOPITIS VERTICILLATA.

I have just received from Japan an importation of this rare and remarkable evergreen. They are of fine shape and in splendid condition.

1 to 2 feet.....	\$ 1 50 each.
2 to 3 feet.....	2 00 each.
3 to 4 feet specimens.....	5 00 each.

	Each.	Per doz.		Each.	Per doz.
Abrotvitæ , American, 15 to 18 inches; per 100, \$10.00.....	\$ 20	\$ 2 00	Retinospora , Plumosa Anrea, sheared specimens, \$1.00, \$1.50 and \$2.50 each.....		
" " 2 to 3 feet; per 100, \$20.00.....	30	2 50	" Pissifera Aurea.....	\$ 50	\$ 5 00
" Golden.....	50	5 00	" Squarrosa Veitchi, 12 to 18 inches.....	50	5 00
" Peabody.....	50	5 00	" " specimens.....	1 50	15 00
" Siberian, fine for hedging.....	40	4 00	The Retinosporas are all small-growing evergreens of exquisite foliage and fine coloring. They can be used on small grounds as they take up but little room.		
" 6 to 12 inches, suitable for hedging, per 100 \$12.00.....	20	1 50	Spruce , Alcock's.....	1 00	10 00
" Globosa.....	50	5 00	" Douglas, magnificent and very hardy.....	1 25	12 00
Blota , Orientalis Anrea.....	35	3 50	" Englemann's.....	2 25	25 00
" Elegantissima.....	30	3 00	" Hemlock, This native evergreen is one of the finest and most graceful trees in cultivation. It makes the most beautiful of all evergreen hedges, 18 to 24 inches; per 100, \$30.00.....	50	4 00
Cedrus , Atlantica glauca, "Blue Cedar," extremely rare and beautiful blue evergreen.....	3 00	" Hemlock, 8 to 15 inches; per 100, \$15.00.....	25	2 50
" Atlantica glauca, small trees.....	75	7 50	" Colorado Blue, one of the most beautiful evergreens, and one of the hardiest, 12 to 15 inches.....	1 25	12 00
Cypress , Lawson's, 12 to 24 inches.....	30	3 00	" Colorado Blue, selected blue specimens, 2 to 4 feet.....	3 50	30 00
Fir , Balsam.....	40	4 00	" Colorado Blue, selected blue specimens, 4 to 5 feet.....	5 00	50 00
" Cephalonian.....	1 50	16 00	" Colorado Blue, green form often sent out as the true blue.....	1 00	9 00
" European Silver.....	50	5 00	" Concolor, very scarce and beautiful, 12 to 15 inches.....	1 50	15 00
" Hudson Bay.....	3 50	" Concolor, 2 to 3 feet.....	3 50
" Nordmann's, a superb evergreen, specimens, \$2.00, \$3.00, \$4.00 and \$5.00 each.....	1 25	12 00	" Norway (very low prices by the 100 or 1,000).....	35	3 50
Juniper , Golden Alpine.....	1 50	16 00	" Weeping Norway, very curious and picturesque tree.....	1 50	15 00
" Savin.....	60	6 00	" Oriental.....	1 00	10 00
" Prostrate.....	75	7 00	" White.....	40	4 00
" Irish.....	50	5 00	" Tiger Tail (<i>Abies Politia</i>).....	1 00	10 00
Pine , Austrian.....	40	4 00	Yew , Canadian.....	50	5 00
" Stone (<i>Pinus Cembro</i>).....	75	7 50	" English, small.....	20	2 00
" Mugho, 12 to 20 inches in diameter.....	35	3 50	" " 3 to 4 feet.....	7 50
" Scotch.....	50	5 00	" Golden, 1½ to 2 feet.....	5 50
" White.....	35	3 00	" Irish.....	2 50
Retinospora , Ericoides, 12 to 18 inches.....	35	3 50	" Japanese, 3 to 4 feet.....	5 00
" Pissifera, 12 to 24 inches.....	35	3 50			
" Leptoclada, 12 to 18 inches.....	35	3 50			
" Ohtusa Compacta, 15 inches.....	50	5 00			
" Nana Anrea, 6 inches.....	30	3 00			
" Anrea Gracilis, 12 inches.....	50	5 00			
" Plumosa, 2 to 3 feet.....	40	4 00			
" sheared specimens.....	75	8 00			
" Aurea, 12 to 18 inches.....	35	3 50			



HEDGED GARDEN OF HARDY PLANTS.—From Country Life.

Ornamental Hedges.

Hedges can be used to advantage on all suburban and country places, large or small. Where protection against cattle is not needed a well-kept hedge is far more beautiful than the most costly wall or fence. At Newport, the most beautiful summer resort in America, hedges are very popular and are used more than both walls and fences. I have made arrangements for supplying all the best varieties of hedge plants at extremely low prices.

TRIMMED HEDGES.

	Per 100.
Hemlock Spruce. This undoubtedly makes the most beautiful evergreen hedge that can be grown in this climate. It is perfectly hardy, a fine rich green in color, which color it retains all through the winter, and no matter how hard it is trimmed, the peculiar feathery appearance of its young growth always gives it a graceful appearance. Plant 18 to 24 inches apart, nice young plants 8 to 15 inches high.....	\$ 15 00
" " 18 to 24 inches, twice transplanted.....	20 00
Hemlock Spruce, 12 to 18 inches.....	30 00
Mahonia Aquifolium. This, which is one of the most beautiful evergreen shrubs, makes a splendid hedge. It is covered with showy yellow flowers in the spring, but its greatest beauty is its foliage, which is fine at all seasons of the year, but especially so in the fall and winter when it turns to the finest bronze and crimson. It is especially desirable as a trimmed or untrimmed hedge. Plant 18 inches apart. I offer a splendid stock of plants, 12 to 18 inches high, at less than it can be bought for at wholesale.....	12 00
Crataegus Pyracantha Lalandi, (Improved Evergreen Thorn). I think the most beautiful hedge I have ever seen in America is one of this thorn, on the grounds of Mr. Winthrop, at Newport, R. I. The foliage is dense and of a beautiful glossy green, which turns in the winter to a rich bronze. In the fall and winter this thorn is covered with small bright scarlet berries, which makes it extremely attractive. Nice stocky plants.....	15 00
Crataegus Oxycantha, (English Hawthorn). This is the thorn that is used all over England for field and farm hedges. It is very attractive, being covered with white sweet scented flowers in the spring, and bright scarlet berries in the fall and winter; nice plants, 24 to 48 inches high.....	12 00
California Privet. This is the most popular hedge plant in this country, which is explained by its handsome appearance, rapid growth and low price. A fine hedge, five feet high, can be made with it in three seasons if planted in deep rich soil. It should be planted in single rows, 8 to 10 inches apart, or alternated in double rows, and the plants set 16 to 18 inches apart in each row, and the rows 6 inches apart.	
California Privet, 1 year, 12 to 15 inches.....	3 00
" " 2 to 2½ feet.....	6 00
" " 2½ to 3 feet.....	8 00
" " 3 to 4 feet.....	10 00
Common Privet makes a good hedge and will stand in extreme northern states where California Privet is not hardy..	6 00

UNTRIMMED HEDGES.

Untrimmed hedges are allowed to grow naturally without pruning, and as a rule are not suitable for planting on the boundaries of grounds, but can be used for enclosing flower or vegetable gardens, on the edge of terraces and along roads and walks. Sometimes they can be used to conceal unsightly but necessary fences.	Per 100.
Berberis Thunbergii, (Japanese Barberry). One of the most beautiful shrubs in cultivation either for hedging or general purposes. It is of a neat compact growth and never need be touched with the shears. The foliage is beautiful at all times, but in the fall turns to a most brilliant crimson color, but its most attractive feature is its fruit. The plant is literally covered with bright scarlet berries all the fall and winter. It never grows over about three feet high. If a low hedge is desired, it can be used for a boundary one. It is fine for the edge of a terrace and along roads and walks; as it is quite thorny, boys and cattle will leave it alone. Plant 15 to 18 inches apart; small plants.....	\$ 6 00
Corchoris Japonica Variegata. This makes one of the daintiest little hedges imaginable. The growth is slender and graceful, the foliage is of fine form and beautifully variegated, and after the leaves drop in the fall the twigs are a bright green color, which makes a hedge of it very attractive all winter.....	10 00
Kalmia latifolia, (Mountain Laurel). This splendid native evergreen shrub makes a beautiful and unique hedge. It would be worth growing for its fine evergreen foliage alone, but when it is in bloom in June, nothing in the world makes a finer floral display. Nice transplanted plants 6 to 12 inches.....	15 00
Lilacs. The common purple and white lilacs make a desirable flowering hedge, but of course a very tall one. I can supply both colors, nice plants, 1 to 2 feet high.....	8 00
Altheas, (Rose of Sharon). These make a desirable flowering hedge which blooms in August. They should be cut back a little, just enough to keep them compact. Nice young plants, seedlings.....	10 00
Altheas, best named varieties, strong plants.....	13 00
Crimson Rambler Rose. This remarkably fine climbing rose makes a superb hedge if planted in a row, and cut back early every spring to about three feet high.....	20 00
Sweet Briar. The popular sweet briar makes an attractive hedge and is desirable for planting along a fence.....	8 00
Rose Mad. Plantier. This well known hardy white rose makes a fine hedge, and when in full bloom in June nothing can be more attractive.....	18 00

Hardy Climbing Plants.

	Each.	Per doz.	Per 100.
Actinidia Polygama.....	\$ 50	\$ 5 00
Akebia Quinata.....	25	2 50
Ampelopsis Veitchii.....	20	1 75	12 00
" Royalii.....	25	2 50
" extra strong.....	40	4 00
" Virginica (Virginia Creeper).....	20	2 00	11 00
" Variegata.....	25	2 50	15 00
Aristolochia Sypho, Dutchman's Pipe.....	50	5 00
Bignonia Radicans (native trumpet creeper), orange red.....	25	2 50
" Grandiflora, (Chinese trumpet creeper).....	30	3 00
" Thunbergii, scarlet.....	35	3 25
Clematis Cocclea.....	25	2 00	14 00
" Henryi, best large flowered, white.....	50	5 00
" Vitalba.....	25	2 00	16 00
" Jackmanii.....	50	5 00
" extra large.....	1 00	10 00
" Paniculata, new and very fine, extra strong plants.....	25	2 50
" Crispa.....	25	2 00	16 00
" Flamula.....	25	2 50
" Virginiana.....	25	2 50	15 00
Celastrus Scandens, (Bitter Sweet).....	25	2 50
Doilchos Japonica, (Japanese hardy bean), the fastest growing vine in cultivation.....	30	3 00
Euonymus Radicans, a splendid Evergreen vine of slow growth and elegant rich foliage. In Eric I saw the base of the walls of a stone house covered with this vine. The effect was extremely fine.....	20	1 50	10 00

	Each.	Per doz.	Per 100.
Euonymus Radicans Variegata, a most beautiful evergreen vine, suited for covering low walls or for carpeting the ground. For covering the walls of a house for a few feet only nothing can be finer.....	\$ 20	\$ 2 00	\$ 13 00
Honeysuckle Japonica, (evergreen) Halliana, Brachypoda, Aurea Reticulata (golden) two years or pot grown.....	20	2 00	12 00
" Heckrotti, a superb and scarce sort, undoubtedly the finest Honeysuckle in cultivation.....	25	2 50
Lycium Chinese, (Matrimony Vine).....	20	2 00
Menispermum Canadense, (Moonseed).....	25	2 50
Poleipoca Græca, (silk vine).....	40	4 00
Polygonum Baldschuanicum, a new and vigorous growing climber that is attracting a great deal of attention in England. Very free flowering; the small branchlets bear large panicles of pure white flowers.....	2 50
Wistaria Sinensis, purple.....	30	3 00	17 00
" Alba, white.....	50	5 00	30 00
" Multijuga, (Japanese Wistaria), a superb variety with racemes of flowers often three feet long.....	30	3 00
" " Alba, white flowered.....	30	3 00
Vitis Coignettiae, new Japanese ornamental grapevine of rapid growth and great beauty.....	50	5 00
" Æstivalis, American wild grape.....	20	2 00
" Riparia, American wild grape.....	15	1 50	10 00
" Odorata, sweet-scented wild grape, very fragrant.....	25	2 50

Ornamental Grasses. FOR BEDDING PURPOSES.

The following grasses and reeds are splendid for making tropical-looking beds and groups, and being entirely hardy and of the easiest culture, require but little attention after planting. The Eulalias grow from four to six feet high, and the Arundo Donax, in very rich soil, will grow to be sixteen feet high. These plants make splendid beds, and should be generally cultivated. There are two notably fine beds of them in this country, one in the U. S. Botanic Gardens at Washington and the other in the grounds of the late Geo. W. Childs, Esq., near Philadelphia, and there is nothing more striking in either grounds.

- Eulalia Japonica Variegata, green and white variegations, \$1.25 per dozen; \$6.00 per 100.
- Eulalia Zebрина, variegations across the leaf; very odd, \$1.25 per dozen; \$6.00 per 100.
- Eulalia Gracillima, a new variety of extremely beautiful and graceful habit; should be always planted on outside of bed or group. \$1.25 per dozen; \$6.00 per 100.
- Erianthus Ravennæ, a strikingly beautiful hardy grass, growing about 12 feet high. 35 cents each; \$3.50 per dozen; \$26.00 per 100.

- Arundo Donax, of very striking appearance; will grow 16 feet high in rich soil, \$3.00 per dozen; \$20.00 per 100.
- Arundo Donax Variegata, a beautiful variety of the above, with variegation of white; grows 5 to 8 feet, \$2.50 per dozen; \$15.00 per 100.
- Bambusa Metake, (hardy bamboo). This beautiful Bamboo is perfectly hardy and fine for producing tropical effects. 50 cents each; \$5.00 per doz.

Water Lilies.

HARDY VARIETIES.

	Each.	Per doz.
Nelumbium (Lotus) Speciosum, pink.....	\$ 30	\$ 3 00
" extra size.....	50	5 00
" Album Striatum, white striped.....	1 50
" Grandiflorum pure white.....	1 50
" Kermesinum.....	1 50
" Luteum, (American Lotus) yellow.....	75	7 50
" Roseum.....	1 50	15 00
" Shiroman (new), white.....	5 00
" Kinshiren (new), white and pink.....	1 50
Nymphaea Alba, English Pond Lily.....	50	5 00
" Candidissima.....	50	5 00
" Gladstoniana.....	1 00	10 00
" Lavdekeri Rosea.....	2 50
" Martiacea Albida.....	75	7 50
" " Carnea.....	75	7 50
" " Chromatella.....	50	5 00
" " Rosea.....	1 25
" Odorata, common Pond Lily.....	20	2 00
" " Caroliniana.....	1 50
" " Gigantea.....	20	2 00
" " Minor.....	20	2 00
" " Maxima.....	30	3 00
" " Rosea, Pink Cape Cod Water Lily.....	50	5 00
" " Exquisita.....	1 50
" " Sulphurea.....	50	5 00
" Helvoia.....	50
" Tuberosa.....	20	2 00
" " Rosea.....	75	7 50
" " Richardsonii (new).....	50	5 00

TENDER WATER LILIES.

	Each.	Per doz.
Victoria Trickeri.....	\$5.00, \$7.50 and \$10.00 each.
" Regia.....	5.00, 7.50 " 10.00 "
Euryale Ferox.....	\$ 1 50
Nymphaea Columbiana.....	1 50
" Cœrulea.....	75	12 00
" Deaniana.....	1 50	15 00
" Devoniensis.....	50	5 00
" Dentata.....	50	5 00
" Elegans.....	1 00
" Flava.....	25	2 50
" Gracilis.....	1 00
" Lotus.....	1 00
" Mexicana.....	30
" Gigantea.....	2 50
" Rubra.....	50	5 00
" " Rosea.....	2 00
" Zanzibarensis, purple.....	2 00
" " Azorea.....	50	5 00
" " Rosea.....	50	5 00
" Smithiana.....	1 50
" Sturtevantii.....	2 50
" O'Marana.....	2 50

Special Offer of Nelumbiums (Lotus).

Nelumbium Speciosum (Egyptian Lotus). The well-known and far-famed species. Its superb flowers and magnificent foliage produce a splendid sub-tropical effect. The flowers, which are about a foot across when fully opened, are of a deep rose color with a soft creamy white at base of the petals; exquisitely fragrant. Flowering tubers or plants, 30 cents each; \$3.00 per dozen.



ROSA MULTIFLORA.—From Wood and Garden.

HYBRID PERPETUALS.

Per doz. Per 100.

Anne de Diesbach, Baron de Bonstetten, Coquette des Alpes, Coquette des Blancs, Duke of Edinburgh, General Jacqueminot, Hermosa, Jules Margotten, Madame Plantier, Mme Gabriel Luizet, Magna Charta, Paul Neron, Margaret Dickson, Alfred Colomb, Baroness Rothschild, La Reine, Marchioness of Lorne, Mrs. John Laing (one of the best, very free flowering,) Marchioness of Londonderry, Mabel Morrison, Ulrich Brunner, Captain Christy, Mrs. Cleveland, Vick's Caprice, C. de Sansel, Climbing Jules Margotten, Climbing Victor Verdier, General Washington, Countess of Oxford, Tom Wood, John Hopper, Maurice Bernadice, Baron Provost, Mme. Chas. Wood, Francois Levet, Francois Michelin. Two year old plants, principally on their own roots, 30 cents each.....\$3 00 \$20 00

ROSA WICHURIANA HYBRIDS.

Each. Per doz.

Universal Favorite. A free grower, producing long branching shoots, with bright shiny foliage in abundance, and soft, light pink double flowers, two inches in diameter, strongly perfumed.....\$ 30 \$3 00

South Orange Perfection. This is a gem, with free growth close to the ground, and produces multitudes of the most perfectly formed double white flowers, about one and a half inches in diameter, soft blush pink at the tips, changing to white..... 30 3 00

Manda's Triumph. This is a grand hybrid of free growth, with fine foliage, and clusters of from twelve to eighteen flowers on even a small size shoot, literally covering the plant with its perfectly formed double white flowers, nearly two inches across, beautifully imbricated; a valuable sort for either cut flowers or pot plants. It is also very sweet scented..... 30 3 00

Pink Roamer. This is without question a hybrid between the "Sweetbriar" and carries these characteristics in bloom, while the growth, which is very rampant, partakes more of the "Wichuriana." The single flowers, which are produced in close heads, are nearly two inches in diameter, bright rich pink, with almost a white center, which lightens up the orange red stamens, producing an effect which, combined with the fragrance, makes it one of the most valuable roses in cultivation..... 30 3 00

(Roses continued on next page.)

Roses.

Dormant Hardy Roses can be supplied from October until April 20th, Tea Roses all the year.

After a long experience with Roses, I have concluded that the imported budded Roses are comparatively worthless for general planting, and have decided, with the exception of a few varieties, which can only be obtained in budded plants, to handle nothing but American-grown Roses on their own roots. The Roses I handle are of exceptionally fine quality—there is nothing finer to be obtained at any price. Dormant Hardy Roses should be planted in the fall, or very early in the spring, and when planted fully two-thirds of the tops should be cut off. This is imperative. Protect beds during winter with three or four inches of stable manure.

Roses grown on their own roots do not make as large plants in the nursery as budded plants, but their superiority is unquestioned. I could furnish imported budded plants at half the prices quoted below and make a good profit.

A NOTABLE ROSE.

The Red-Leaved Rose (*Rosa Rubifolia*) is little known, but deserves the greatest popularity, both on account of its foliage and flowers. The foliage is reddish purple, better than most of the purple-leaved shrubs, and this foliage, combined with a multitude of single pink flowers, make a unique effect not obtainable with any other plant that I know of. The place for this rose is in shrubbery or on the lawn, as it is a free, vigorous grower. It can also be used advantageously for naturalizing. It is of the easiest culture, and will grow in almost any soil or situation. Price 30c. each; \$3.00 per dozen; \$20.00 per 100. Small plants 20 cents each; \$1.50 per dozen; \$8.00 per 100.

ROSES.—Continued.

Lord Penzance's New Hybrid Sweet Briars.

The Sweet Briar, or Eglantine, is acknowledged by all to possess one of the sweetest perfumes that nature has provided, and its delicious scent is the object for which it is usually cultivated. These new varieties are vast improvements upon the old sorts. They are hybrids obtained by the late Right Hon. Lord Penzance between the common Sweet Briar and various old-fashioned garden Roses, and are possessed of the following advantages:

The flowers, which are borne in wonderful profusion, are varied in color from white, through several shades of pink, to very dark red or crimson.

For vigor or growth there is scarcely anything in the Rose world equal to them. Plants three years old have now many shoots on them that rise to the height of twelve feet. These, with a slightly outward bent and clothed with flowers of exquisite tints, produce a gorgeous effect not easily forgotten by any who have seen them.

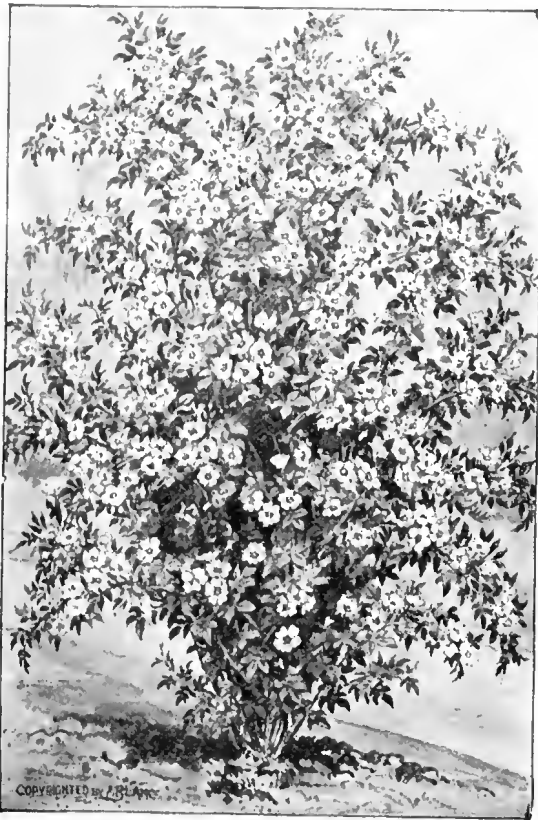
These Roses are more effective when naturalized or used among shrubs than when used as garden plants.

- Anne of Geierstein, dark crimson.
- Flora McIver, pure white, blushed rose.
- Meg Merrilles, crimson.
- Amy Robsart, lovely deep rose, graceful buds.
- Brenda, blush or peach, dainty in coloring and shading.

- Catherine Seyton, soft rosy pink, free blooming.
- Lucy Bertram, fine deep crimson, very rich.
- Rose Bradwardine, beautiful clear rose.
- Lady Penzance, beautiful soft tint of copper, very lovely.
- Lord Penzance, soft shade of fawn passing to a lovely emerald yellow.

Prices for extra strong plants of the above, 30 cents each; \$3.00 per dozen; \$20.00 per 100.

Wild Roses of Various Countries.



ROSA SETIGERA.

With the exception of the Japanese rose, ROSA RUGOSA, American nurserymen have ignored the numerous wild roses, which is unfortunate, for they are undoubtedly the most decorative roses that can be planted, and splendid effects are to be had with them not obtainable with any other plants, and as a rule they are of the easiest culture, vigorous growers and entirely free from attacks of insects or disease. The flowers of all are of course single, but many people, of whom I am one, think single flowers more beautiful than double ones, which after all are abnormal and the coloring, form and often the arrangement of single roses is exquisitely beautiful. I think one of the most beautiful garden pictures I have seen was a trellis covered with a ROSA MULTIFLORA with a border of colored pæonies at the base of the trellis. Both pæonies and roses were in bloom. The rose was covered with literally thousands of its lovely white blooms, each with a center of rich yellow stamens.

These wild roses can be used in many ways; some are climbers and can be used for covering anything desirable to cover with a climber; others like ROSA WICHURIANA are creepers, and are splendid for covering rough banks, others are desirable for planting among shrubbery but especially ROSA RUBRIFOLIA, ROSA RUGOSA and ROSA SETIGERA. Rosa Rubrifolia is especially striking on account of its reddish-purple foliage which makes a fine contrast with its own lovely pink flowers and with the green foliage of surrounding shrubs. Rosa RUGOSA is now pretty well known but is deserving of the greatest popularity. It has every good quality, splendid foliage, immense single white or red flowers, which bloom freely all season and which are followed by large, beautiful red fruit which lasts until severe freezing weather comes in winter. It should always be planted in masses, either by itself or in connection with other shrubbery. It also makes a beautiful hedge.

	Each	Per Doz.	Per 100.
Rosa Arvensis.....	\$ 25	\$2 50
" Canina, "Dog Roses," small plants.....	15	1 50
" Carolina, American wild rose, blooms in July.....	15	1 50
" Luclda, dwarf American wild rose.....	25	2 50
" Multiflora, (Japanese), an extremely beautiful rose that can be used as a climber. See illustration on page 40.....	30	3 00
" Rubrifolia, beautiful reddish foliage, contrasting well with its beautiful pink flowers. Very striking and pretty in groups or planted among shrubbery.....	30	3 00	\$20 00
" Rubiginosa, "Sweet Briar".....	25	2 00	10 00
" Rugosa, mixed colors.....	20	2 00	14 00
" Rugosa Rubra, large red flowers, (Japanese Rose,) extremely desirable.....	30	3 00	20 00

	Each	Per Doz.	Per 100.
Rosa Rugosa Alba, large white flowers.....	\$ 30	\$3 00	\$20 00
" Setigera, " "Single Prairie Rose," blooms in July, striking and fine, desirable for shrubberies.....	25	2 50
" Wichurlana, trailing Japanese Rose, splendid for covering banks or trained as a climber.....	30	3 00	20 00
" Nuttallina.....	25	2 50
" Polyantha.....	25	2 50
" Acicularis, (Siberian Rose,) the first rose to bloom in spring, large red, sweet scented, followed by curious red fruit.....	40	4 00
" Indica, (Indian Rose,) single deep crimson flowers.....	50	5 00

Rhododendrons and Hardy Azaleas.

On page 7 I offer Rhododendrons and Azaleas to be imported to order, orders to be received not later than March 1st. The following stock can be supplied as late as June 1st, provided it is not all sold before that time.

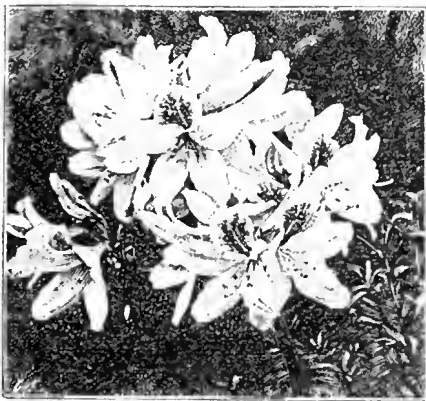
RHODODENDRONS.

	Each.	Per doz.
Best Named Varieties From Waterer's famous nursery, about 18 inches high, good bushy plants, set with bloom buds.....	\$1 35	\$15 00
Seedling Hybrids (from Waterer's famous nursery, perfectly hardy and beautiful assortment of colors, but not marked. Nice bushy plants, all with bloom buds, about 18 inches high.....	1 00	11 00

HARDY AZALEAS.

	Each.	Per doz.
Ghent Azaleas (Waterer's stock), good plants of the finest known kinds, well budded.....	\$1 00	\$11 00
Azalea Mollis (Waterer's stock, good plants of the finest known kinds, well set with bloom buds.....	1 00	11 00
Ghent Azaleas (French stock), good strong, bushy plants, well set with bloom buds, good colors; per 100, \$45.00.....	65	6 50
Azalea Mollis (French stock), good, strong, bushy plants, well set with bloom buds, good colors; per 100, \$35.00.....	55	5 50

The French Azaleas are nice plants, and will give satisfaction, but it takes so long to bring them from the South of France that the bloom buds are apt to be injured, and they do not bloom satisfactorily the first season. After the first sea on they will bloom as well as any other stock.



Flowers of Azalea Mollis.

Special Offer of Azalea Mollis.

I take special pleasure in offering an exceptionally nice lot of small Azalea Mollis at a price much less than ever made before. The plants are 8 to 12 inches high, bushy and in fine condition, a small percentage of them being set with buds. The Azalea Mollis is of comparative dwarf, bush-like habit, with light green leaves, which are somewhat larger than those of other azaleas.

The flowers are as large as the Indian Azaleas, usually seen in greenhouses, being two and a half to three inches in diameter, and appear in bunches on the ends of the shoots. The colors are of various shades of yellow and red, and they expand about the middle of May.

We know of no other flowering shrub to equal them in attractiveness, and when massed in a large bed they create a particularly beautiful spot on the lawn.

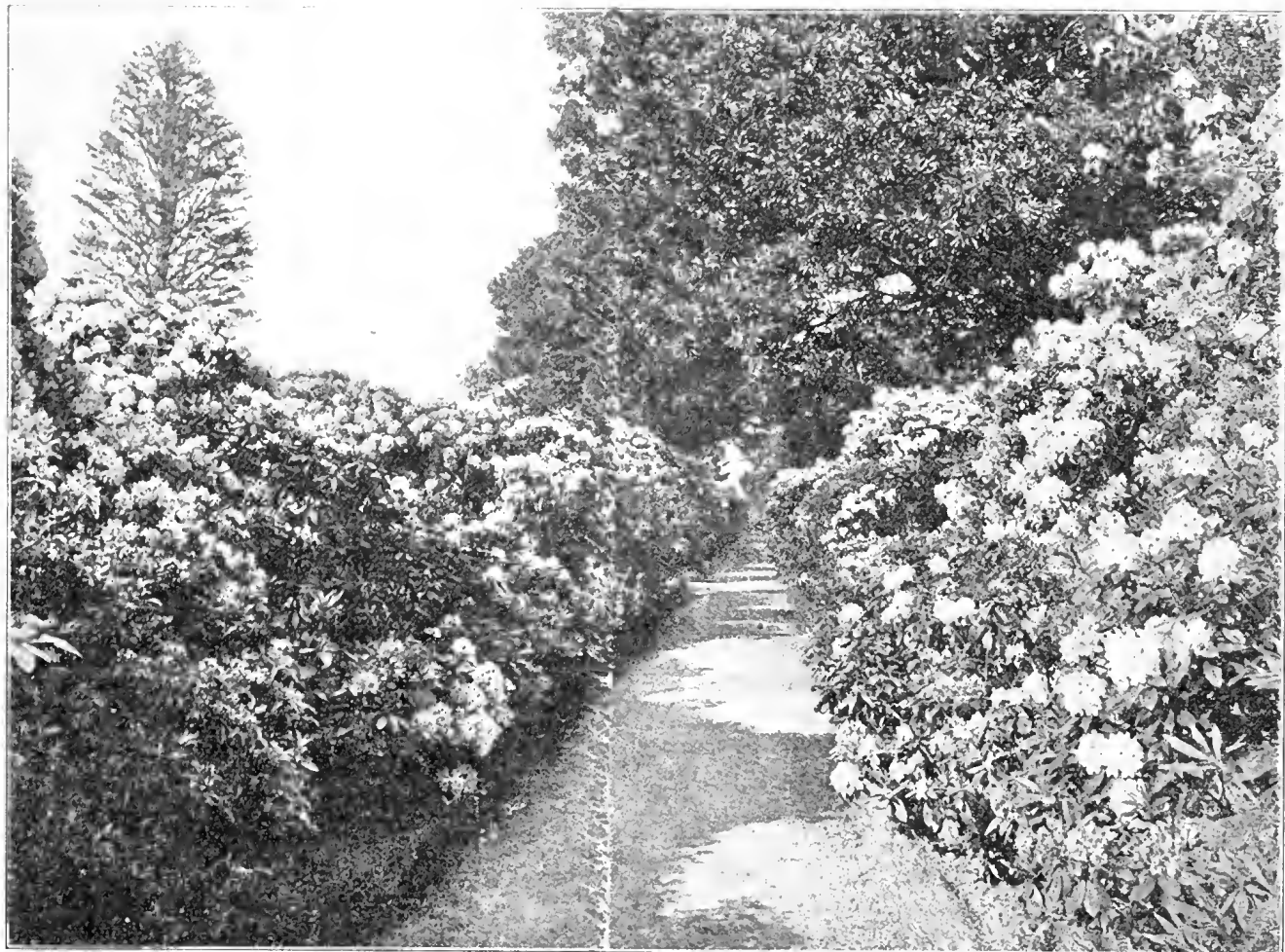
They are also very effective when planted around the edges of Rhododendron beds, as the dark green leaves of the Rhododendrons make a strong background for the bright colors of the Azaleas. They are also valuable for mixing in beds with the Azalea Pontica (Ghent Azalea), as they bloom a little in advance of the others. Price, 35 cents each, \$3.50 per dozen, \$25.00 per hundred.

Fine large plants, 12 to 18 inches, well set with bloom buds, 65 cents each, \$6.50 per dozen, \$35.00 per hundred.

Native and Other Azaleas.

Our native Azaleas are easily among the most beautiful flowering shrubs in the world, but hitherto it has been impossible to get good plants of them as the stock generally offered is newly collected from the woods and very unsatisfactory. The following stock I have had specially grown for my customers, and with the exception of AZALEA NUDFLORA, it is strictly first class and in splendid condition, and many of the plants well set with bloom buds.

	Each.	Per Doz.	Per 100.
Azalea Arborescens (Native), splendid foliage throughout the summer. Large white sweet scented flowers; the latest Azalea to bloom, fine plants 12 to 18 inches.....	\$ 50	\$5 00	\$40 00
" Calendulacea (Native). (Great flame-colored Azalea), flowers vary from deep crimson to a bright sulphur yellow; very showy. Fine plants, 18 to 24 inches.....	60	6 00	40 00
" Nudiflora (Native). This is the Azalea found so plentiful in the Pennsylvania mountains along the Allegheny River, and commonly known as the Wild Honeysuckle. Lovely pink flowers produced in the greatest profusion. One of the most desirable shrubs in cultivation.....	35	3 50
" Vaseyi (Native). This lovely Azalea has attracted a great deal of attention lately, especially in England, where it is highly prized. The flowers appear before the foliage in April in the greatest profusion and vary from white to deep pink. This Azalea will in time grow to be 12 or 15 feet high.....	75	8 00
Azalea Viscosa (Native). A dwarf variety with white flowers; nice plants 12 to 18 inches.....	\$ 75	\$8 00
" Ghent . The following were imported from the best Azalea nurseries in Europe, and have since been grown in this country. They are exceptionally fine plants and well set with bloom buds. The Ghent varieties are the finest of all Azaleas and should be made a feature in every garden. They are extremely effective planted in masses, and especially suitable for planting Japanese and other lilies among. The flowers, sweet scented, produced in the greatest profusion and range in color from white to deep crimson through all shades, pink and yellow. Extra fine plants, well set with bloom buds, 12 to 18 inches.....	1 25	12 00
Extra fine specimen plants, well set with bloom buds.....	2 50	25 00
" Amoena , a dwarf, compact evergreen variety, with rosy purple flowers, makes a beautiful specimen or can be used for an ornamental hedge; small plants.....	25	2 50



SCENE IN THE FAMOUS WATERER NURSERY, ENGLAND.—For list of stock from this nursery, see page 7.

Landscape Gardening.

The majority of American suburban grounds are laid out and planted without the aid of professional advice. The result is almost always unsatisfactory, although often the expenditure would have secured most beautiful results if directed by skilled advice. I do landscape gardening—do it for people of exacting taste, to whom I refer. I make the plans, with estimates; purchase the stock necessary and superintend the work. I do any one or all of these things, satisfactorily as to results, moderately as to cost. For small grounds I can make satisfactory plans if furnished with a plat drawn to scale. For large grounds, and where extensive improvements are desired a personal visit would be necessary and can be arranged for on reasonable terms. I can make no plans during the month of April.

J. WILKINSON ELLIOTT,

LANDSCAPE ARCHITECT,

HORTICULTURAL BUYER'S AGENT,

CARNEGIE BUILDING,

PITTSBURGH, PA.

TELEPHONES:

1078 Pittsburgh (Office).

Colfax Station (Experimental Grounds).

(Through Sharpsburg Exchange.)